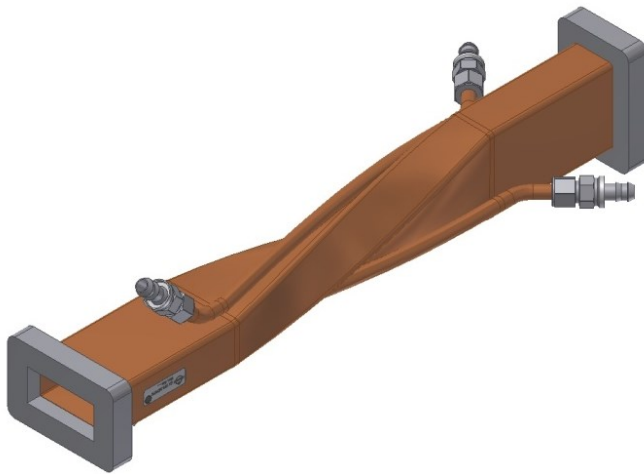


R32 Twist Section|| BN 267676



Radio frequency characteristics

Interface type / material / surface finish	see below, stainless steel, copper plated
Frequency range	2.998 GHz ± 10 MHz
Peak power capability	45 MW*
VSWR, max.	1.05
Insertion loss per meter, max.	0.02 dB
Insertion loss per flange, max.	0.005 dB

- * Conditions:
- Waveguide pressurized with SF₆ at absolute pressure, 4·10⁵ Pa (4 bar) or waveguide evacuated to absolute pressure, max. 1·10⁻⁴ Pa (1·10⁻⁶ mbar)
 - Temperature of waveguide, max. 40 °C
 - Load VSWR, max. ∞
 - Pulse width, max. 15 μs
 - Pulse repetition rate, max. 20 Hz

General mechanical data

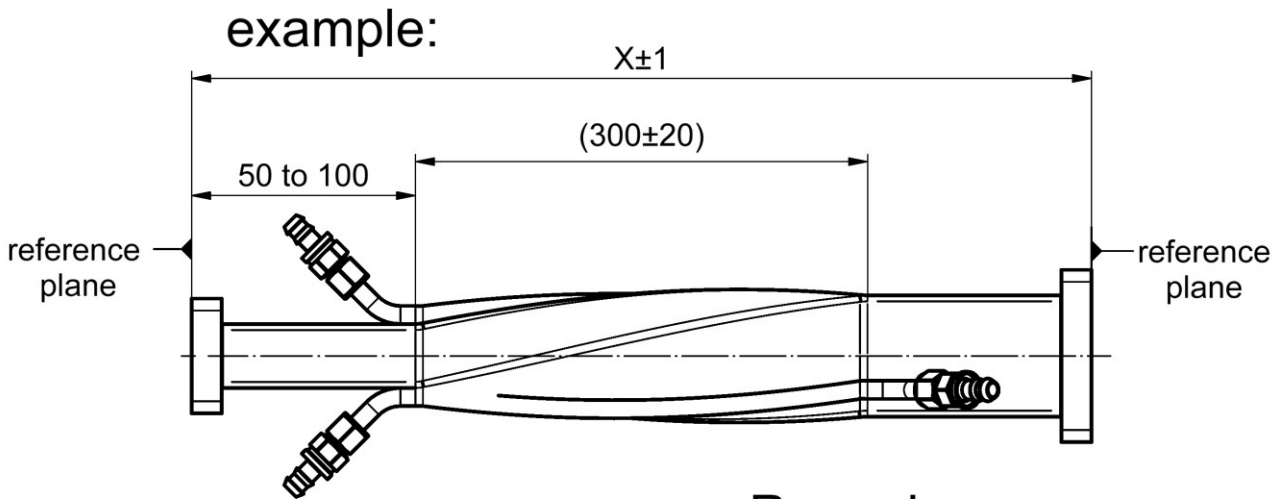
Differential operating pressure, max.	3·10 ⁵ Pa (3 bar)
Leakage rate, max.	1·10 ⁻¹⁰ Pa·m ³ /s (1·10 ⁻⁹ mbar·l/s)
Waveguide material	OFHC Copper
Waveguide surface finish	see below
Interface water cooling	Swagelok Push-On compatible for hose DN ½" (if selected)
Absolute operating pressure for water cooling, max.	1·10 ⁶ Pa (10 bar)
Bakeable to	170 °C (excluding arc-detector and if selected without painting)
IP protection level	IP64 per EN 60529 (all interfaces connected with appropriate gaskets)
Weight, approx.	6 kg (R32EB-0200x0200-LIL/LIL-12x1/B45/DK-0-1) 8,2 kg per additional meter
Marking	adhesive label

R32 Twist Section|| BN 267676

General environmental conditions

Operation	
Ambient temperature range	+10 to +50 °C
Relative humidity, max.	95% (condensation not permitted)
Storage	
Ambient temperature range	-20 to +50 °C
Relative humidity, max.	95% (condensation not permitted)

Outline and dimensions



Remarks:

- 1) min. length: 400mm
- 2) max. length: 900mm

R32 Twist Section|| BN 267676

cooling pipe					arc-detector	
diameter	version		connection			
Cu-pipe	12x1	braze assembly	L20	DK-Lok Ø12 mm	DK	with A
						without arc-det.
						without
Cu-pipe	20x1	90° - bend	B90	without		00

	45° - bend	B45
	90° - bend flat	F90
	90° - bend flat	G90

WG-type | length | flange | cooling pipe | arc-detector | painting

R32TW-0400x0000-LIL/LIL-12x1/B45/DK-0-1

EB = E-bend
 HB = H-bend
 GH = straight-section
 TW = twist
 (2 digits)

long side in mm (4 digits)

short side in mm* (4 digits)
 * at straight sections 0000

flange type long side (3 digits)
 LIL = LIL-flange (1.4429, 316L+N)
 LI2 = LIL-flange (1.4404, 316L)
 UDR = CPR284-F/UDR 32
 MFF = Merdinian female
 MFM = Merdinian male

flange type short side (3 digits)

diameter and wallthickness (4 digits)

cooling pipe version (3 digits)

interface cooling pipe (2 digits)

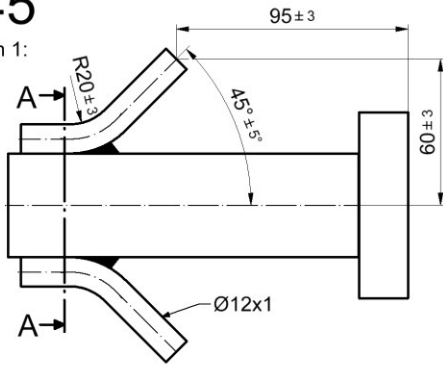
with/without arc-detector (1 digit)

0 = without
 1 = black (RAL9005)

R32 Twist Section|| BN 267676

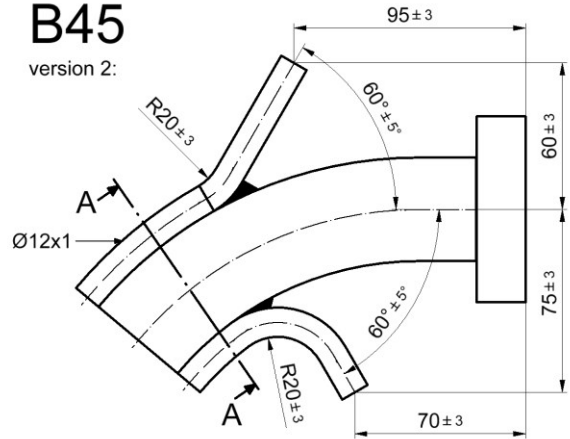
B45

version 1:

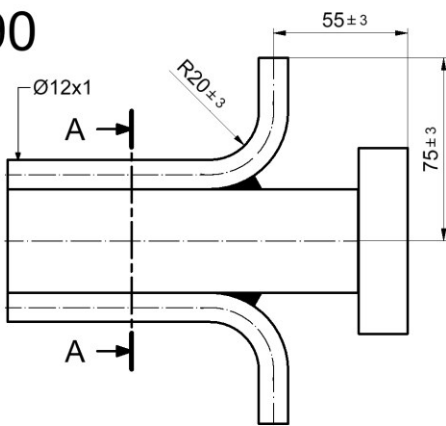


B45

version 2:

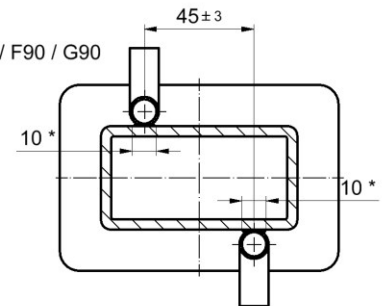


B90



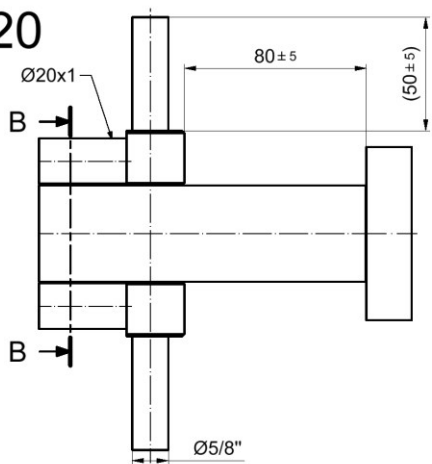
A-A

valid for B45 / B90 / F90 / G90



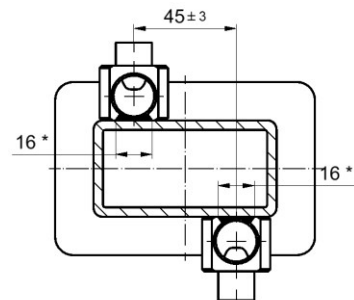
* minimum dimensions of solder for heat transfer from waveguide to copper tube

L20

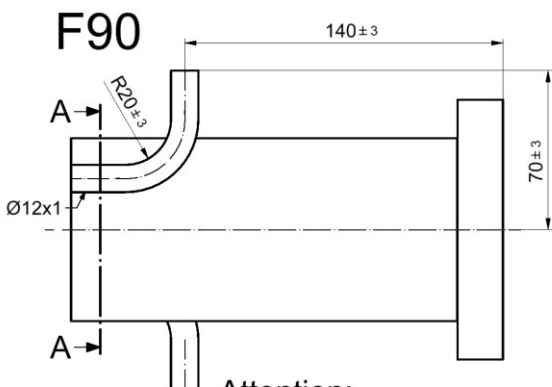


B-B

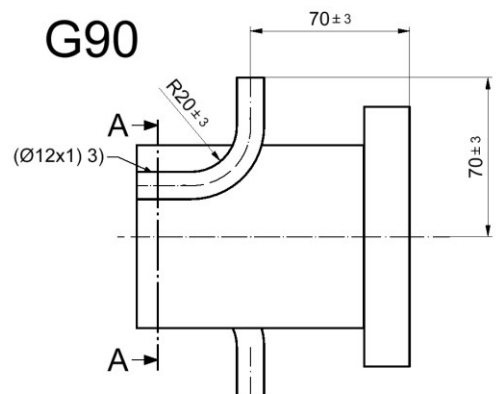
valid for L20



F90



G90



Attention:

Version only valid for long side.
version for short side: B45.

R32 Twist Section|| BN 267676

C
U

