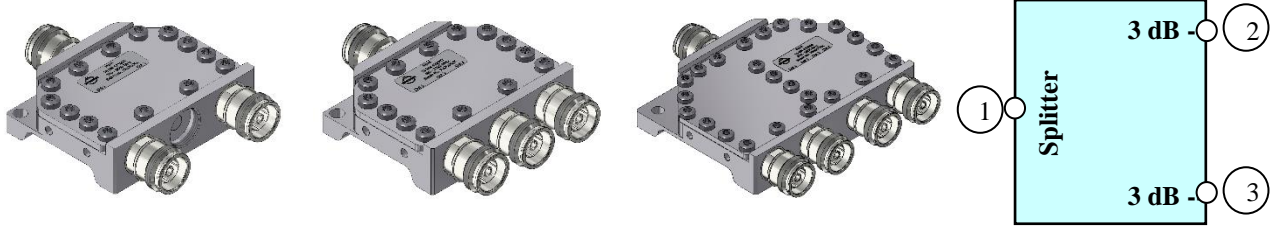


Symmetric Splitters 380-3800MHz



BN 433006

BN 433007

BN 433008

Block diagram use 433006 as sample

Electrical characteristics

| Part number | BN 433006 | BN 433007 | BN 433008 |
|--|--|--|--|
| Splitting ratio | 1: 0.5: 0.5 | 1: 0.33: 0.33: 0.33 | 1: 0.25: 0.25: 0.25: 0.25 |
| Frequency range: | 380 – 3800 MHz | | |
| Insertion loss: | 380 – 2700 MHz 2700 – 3800 MHz | 3.2 dB ± 0.2 dB 3.3 dB ± 0.3 dB (including splitting losses) | 5.2 dB ± 0.4 dB 5.3 dB ± 0.4 dB (including splitting losses) |
| VSWR (Port 1) | 380 – 2700 MHz 2700 – 3800 MHz | ≤ 1.3 ≤ 1.4 | ≤ 1.3 ≤ 1.4 |
| Power Rating: | ≤ 200 W @ 380 – 3800 MHz | | |
| DC-by-pass | DC all ports (max. 1A per input max. 60V DC (AISG Standard, 2.0, § 6.4)) | | |
| Passive intermodulation (IM3), 3rd order @ 2 x 20W | -160 dBc max. / -165 dBc typ. | -155 dBc max. / -160 dBc typ. | -160 dBc max. / -165 dBc typ. |
| Impedance | 50 Ohm | | |

Mechanical characteristics

| | | | |
|----------------------|---|---|--|
| Connectors | 4.3-10 female | | |
| Dimensions, approx. | 82 x 105 x 24 mm (Width x Height x Depth) | 82 x 105 x 24 mm (Width x Height x Depth) | 114 x 125 x 24 mm (Width x Height x Depth) |
| Weight, approx. | 0.3 kg | 0.3 kg | 0.5 kg |
| Color | light grey polyurea (RAL 7047) | | |
| Wall / Mast mounting | to be ordered separately under BN B23656 | to be ordered separately under BN B23656 | to be ordered separately under BN B23657 |

Environmental conditions

| | |
|-------------------------------------|---|
| Class. of environmental conditions | ETSI EN 300019-1-1 Class 1.2 ETSI EN 300019-1-2 Class 2.3 ETSI EN 300019-1-3 Class 4.1E |
| Degree of protection | IP 65 |
| Operation Ambient temperature range | -25 °C to +55 °C |
| Storage Ambient temperature range | -40 °C to +85 °C |
| Relative humidity, max. | 95% (non-condensing) |

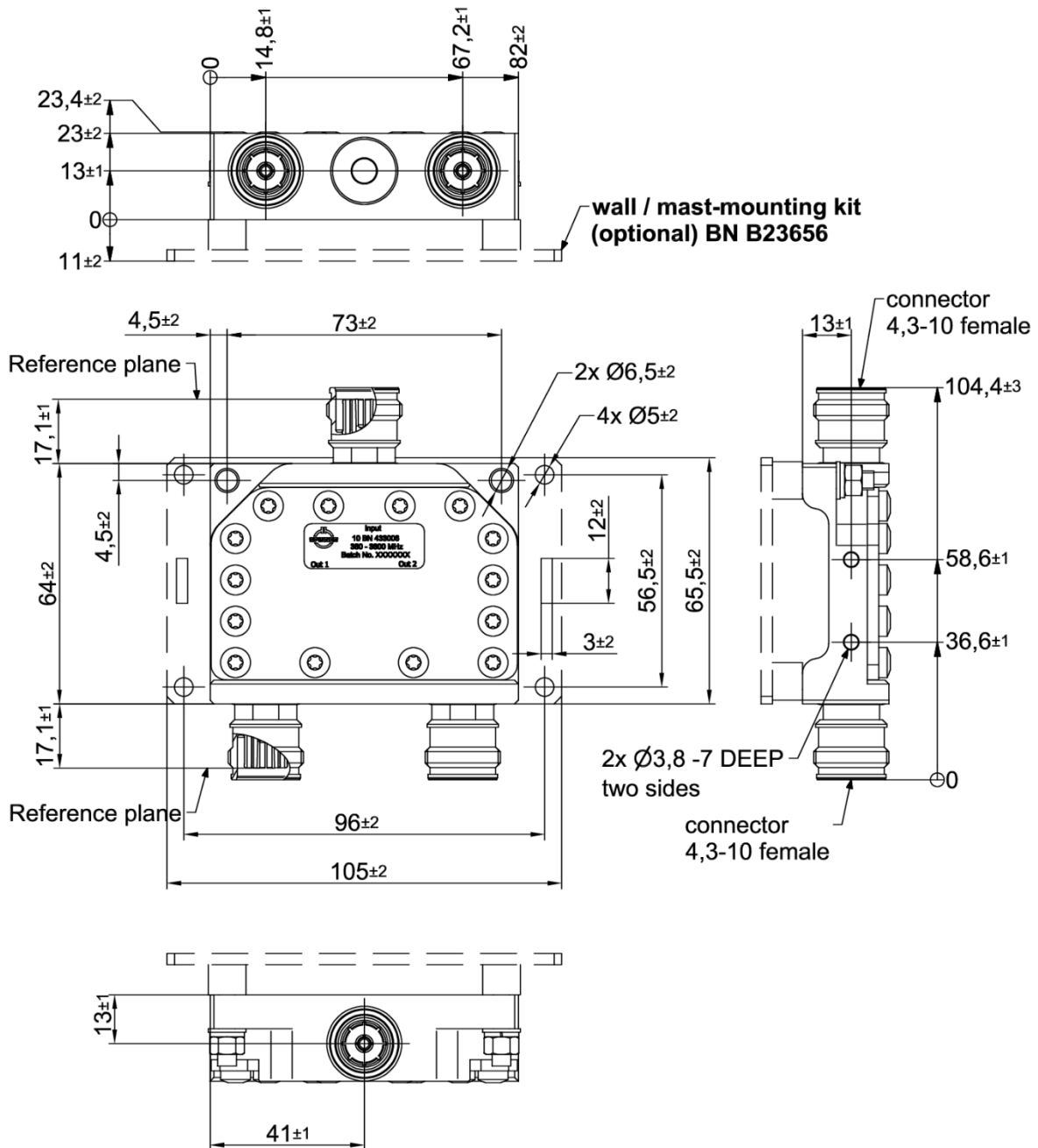
SPINNER GmbH
 This document is proprietary to us.
 All rights reserved. Any use, transfer, or reproduction of this document
 or the know-how contained therein requires our express consent.

Template TD-00002Y

Symmetric Splitters 380-3800MHz

Outline (all dimensions in millimeter)

BN 433006



Standard:
4.3-10 female (50 ohms): IEC 61169-54

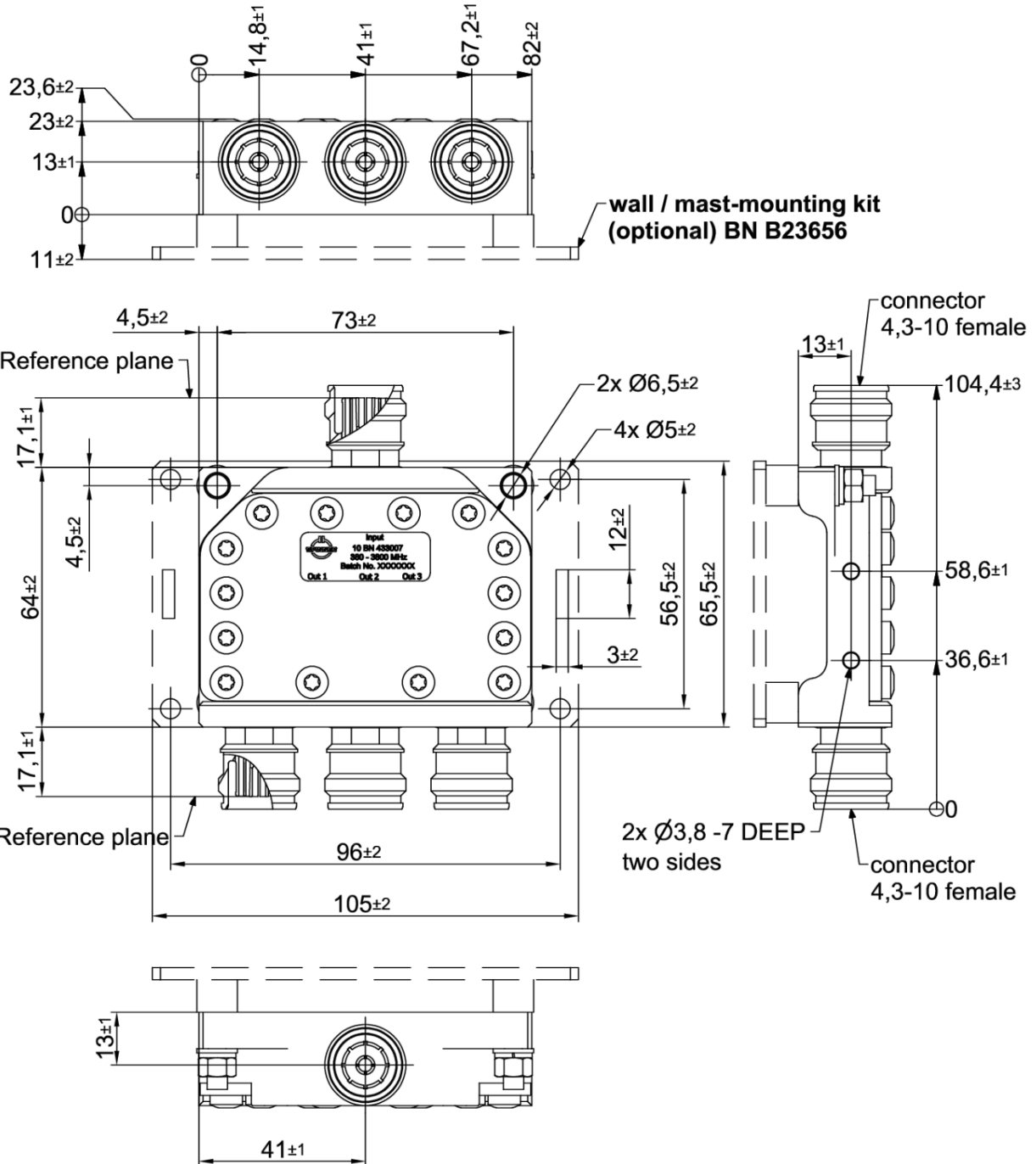
modifications reserved!

SPINNER GmbH
This document is proprietary to us.
All rights reserved. Any use, transfer, or reproduction of this document
or the know-how contained therein requires our express consent.

Template TD-00002Y

Symmetric Splitters 380-3800MHz

BN 433007



SPINNER GmbH
 This document is proprietary to us.
 All rights reserved. Any use, transfer, or reproduction of this document
 or the know-how contained therein requires our express consent.

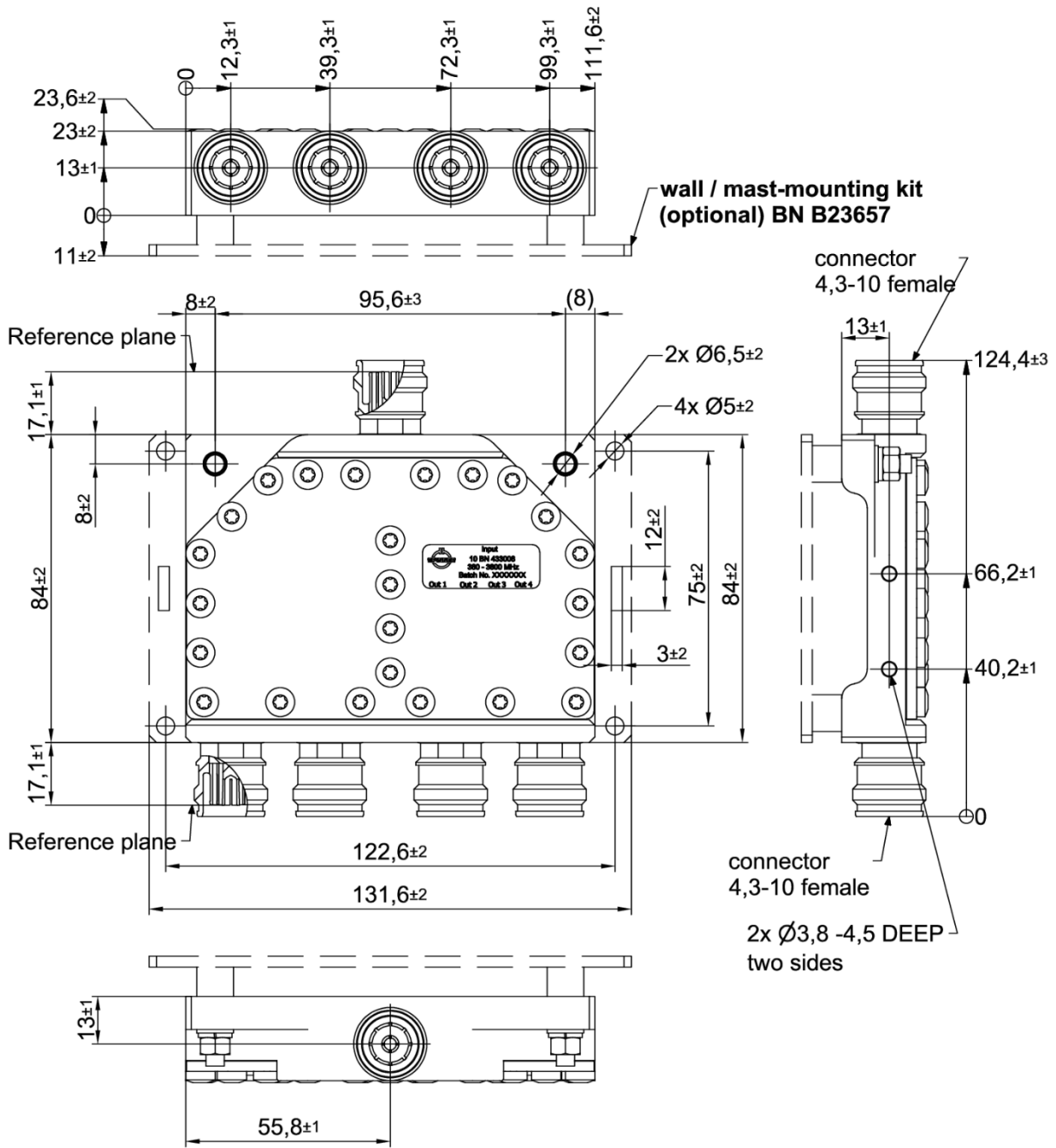
Standard:
 4.3-10 female (50 ohms): IEC 61169-54

modifications reserved!

Template TD-00002Y

Symmetric Splitters 380-3800MHz

BN 433008



SPINNER GmbH
 This document is proprietary to us.
 All rights reserved. Any use, transfer, or reproduction of this document
 or the know-how contained therein requires our express consent.

Standard:
 4.3-10 female (50 ohms): IEC 61169-54

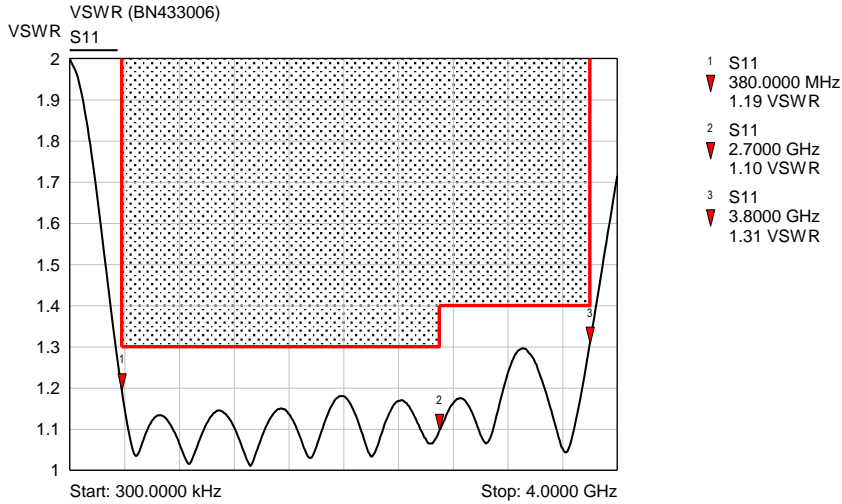
modifications reserved!

Template TD-00002Y

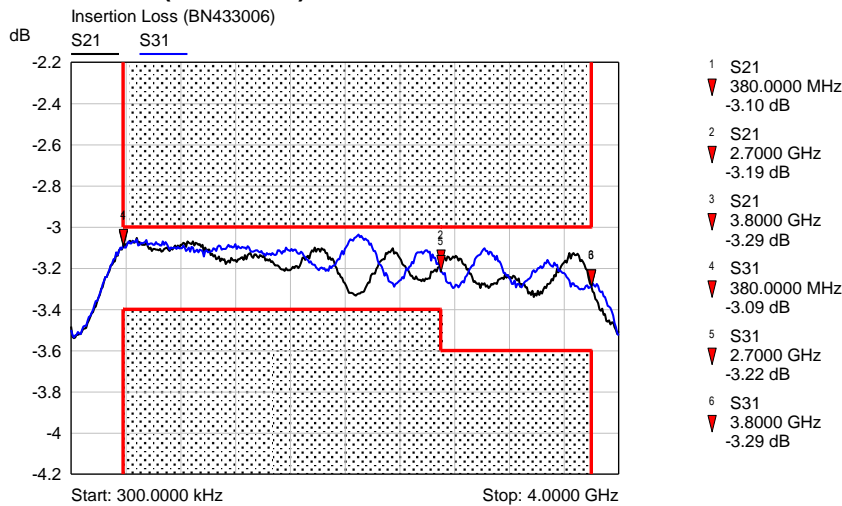
Symmetric Splitters 380-3800MHz

Measurements:

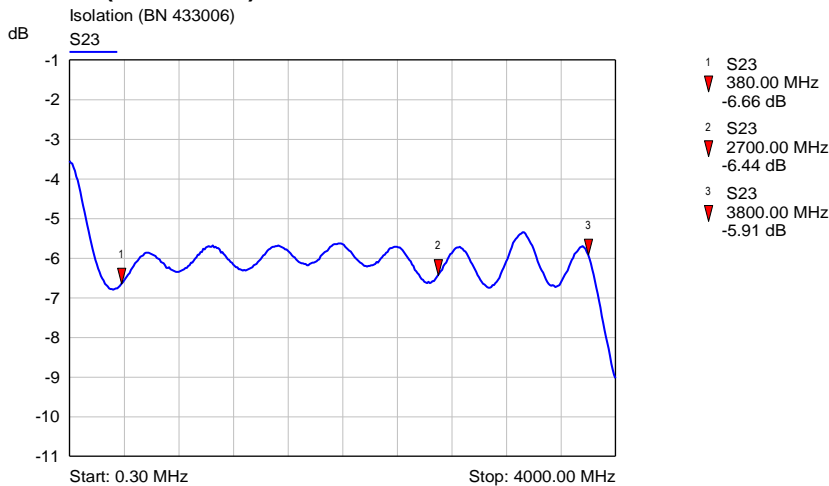
VSWR (BN433006):



Insertion loss (BN433006):



Isolation (BN 433006):



SPINNER GmbH
This document is proprietary to us.
All rights reserved. Any use, transfer, or reproduction of this document
or the know-how contained therein requires our express consent.

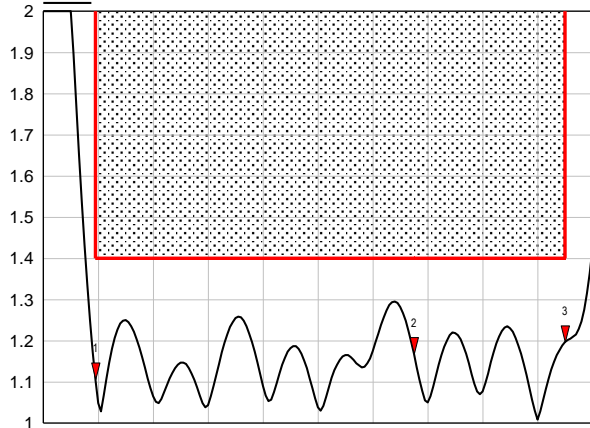
Template TD-00002Y

Symmetric Splitters 380-3800MHz

VSWR (BN433007):

VSWR(BN433007)

VSWR S11



Start: 300.0000 kHz

Stop: 4.0000 GHz

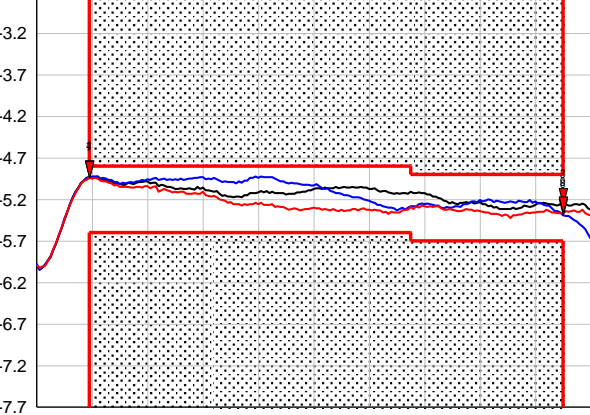
- 1 S11
▼ 380.0000 MHz
1.11 VSWR
- 2 S11
▼ 2.7000 GHz
1.17 VSWR
- 3 S11
▼ 3.8000 GHz
1.20 VSWR

Insertion loss (BN433007):

Insertion Loss(BN433007)

dB

S21 S31 S41



Start: 300.0000 kHz

Stop: 4.0000 GHz

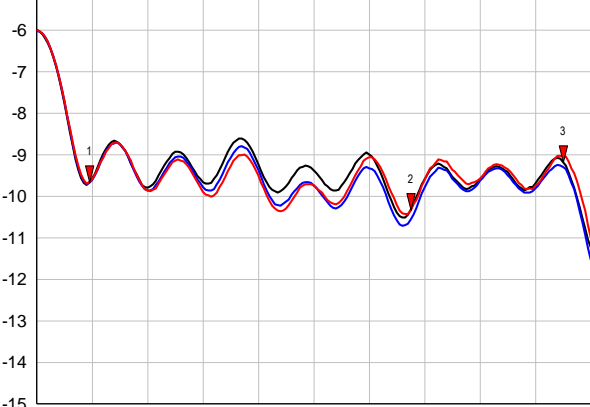
- 1 S21
▼ 380.0000 MHz
-4.93 dB
- 3 S21
▼ 3.8000 GHz
-5.27 dB
- 4 S31
▼ 380.0000 MHz
-4.93 dB
- 6 S31
▼ 3.8000 GHz
-5.39 dB
- 7 S41
▼ 380.0000 MHz
-4.94 dB
- 9 S41
▼ 3.8000 GHz
-5.36 dB

Isolation (BN 433007):

Isolation (BN 433007)

dB

S32 S43 S42



Start: 0.30 MHz

Stop: 4000.00 MHz

- 1 S32
▼ 380.00 MHz
-9.67 dB
- 2 S32
▼ 2700.00 MHz
-10.34 dB
- 3 S32
▼ 3800.00 MHz
-9.18 dB

SPINNER GmbH
This document is proprietary to us.
All rights reserved. Any use, transfer, or reproduction of this document
or the know-how contained therein requires our express consent.

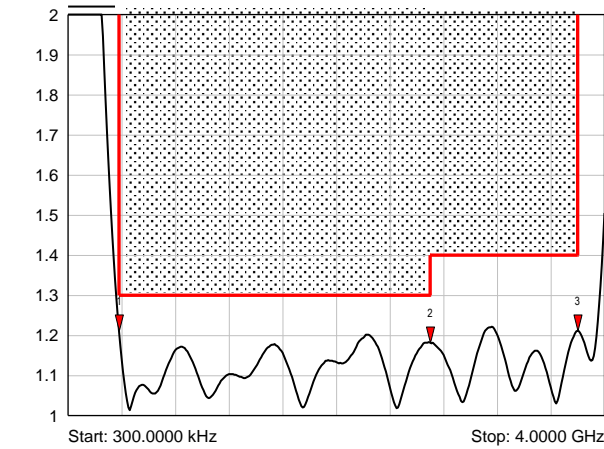
Template TD-00002Y

Symmetric Splitters 380-3800MHz

VSWR (BN433008):

VSWR (BN433008)

VSWR S11



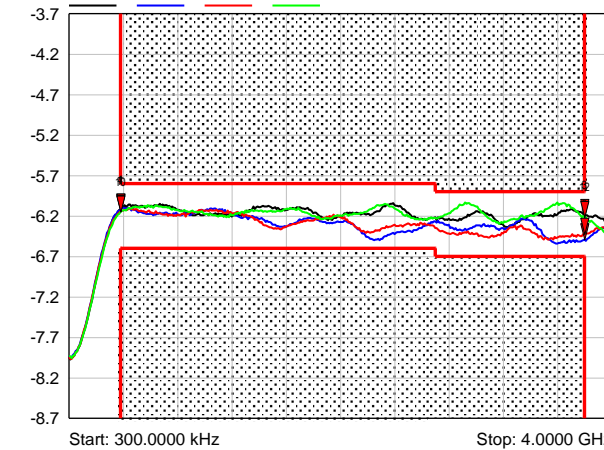
- 1 S11
▼ 380.0000 MHz
1.21 VSWR
- 2 S11
▼ 2.7000 GHz
1.18 VSWR
- 3 S11
▼ 3.8000 GHz
1.21 VSWR

Insertion loss (BN433008):

Insertion loss (BN433008)

dB

S21 S31 S41 S51



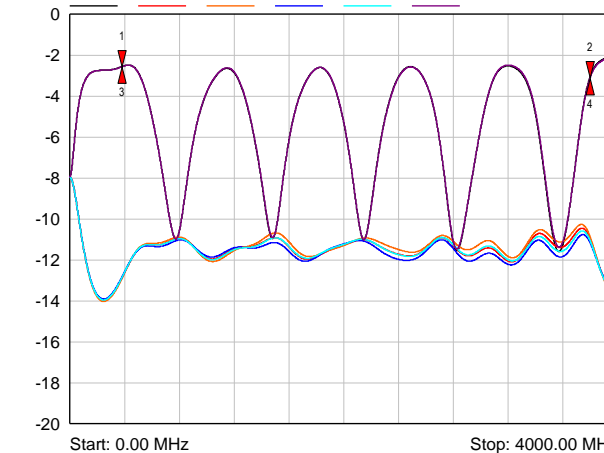
- 1 S21
▼ 380.0000 MHz
-6.12 dB
- 3 S21
▼ 3.8000 GHz
-6.19 dB
- 4 S31
▼ 380.0000 MHz
-6.13 dB
- 6 S31
▼ 3.8000 GHz
-6.49 dB
- 7 S41
▼ 380.0000 MHz
-6.14 dB
- 9 S41
▼ 3.8000 GHz
-6.43 dB
- 10 S51
▼ 380.0000 MHz
-6.15 dB
- 12 S51
▼ 3.8000 GHz
-6.22 dB

Isolation (BN 433008):

Isolation (BN 433008)

dB

S23 S24 S25 S34 S35 S45



- 1 S23
▼ 380.00 MHz
-2.57 dB
- 2 S23
▼ 3800.00 MHz
-3.09 dB
- 3 S45
▼ 380.00 MHz
-2.57 dB
- 4 S45
▼ 3800.00 MHz
-3.14 dB

SPINNER GmbH
This document is proprietary to us.
All rights reserved. Any use, transfer, or reproduction of this document
or the know-how contained therein requires our express consent.

Template TD-00002Y