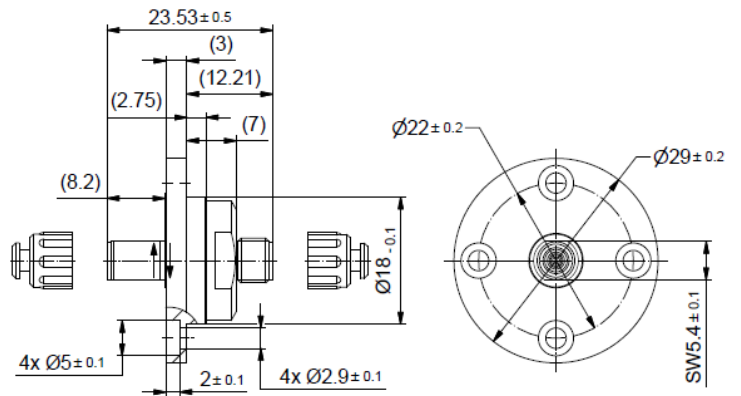
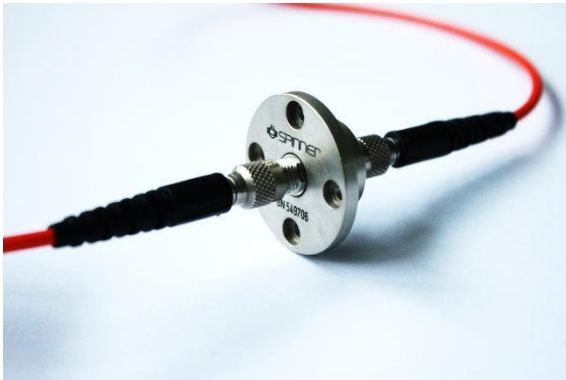


Rotary Joint || BN 549706C0100



Fiber optic channel characteristics

Interface type / material	F-SMA -f / cooper alloy
Wavelength	400 - 2000 nm (depends on used fiber)
Average power capability, max.	depends on used fiber
Insertion loss, max.	2.0 dB (with 200 µm core fiber patch cables)
Insertion loss variation over rotation, max.	0.5 dB (with 200 µm core fiber patch cables)

Mechanical characteristics

Rotating speed, max. / nominal	300 rpm / 200 rpm
Life, min.	200 x 10 ⁶ revolutions
Torque (room temperature), max.	0.3 Ncm @ start-up 0.2 Ncm @ rotation
Case material	copper alloy, corrosion resistant
Case surface finish	no finish
IP protection level	IP50 per EN 60529 (all interfaces connected with appropriate gaskets)
Weight, approx.	0.03 kg
Marking	laser engraving

Template TD-00002U

Rotary Joint || BN 549706C0100

Environmental conditions

Operation	
Ambient temperature range	-32 °C to +71 °C
Relative humidity, max.	95% (non-condensing)
Storage	
Ambient temperature range	-40 °C to +85 °C
Relative humidity, max.	95% (non-condensing)

Applicable documents

Technical information	"Rotary Joints – Glossary", Technical Document TD-00021, Spinner GmbH
-----------------------	---