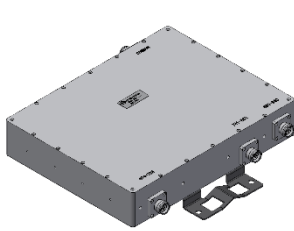
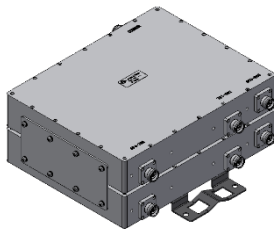


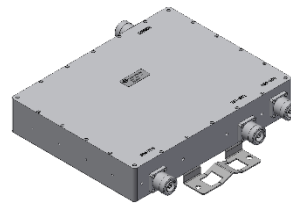
Triplexer 700 / 800 / 900



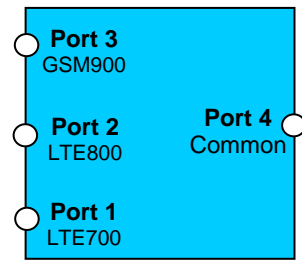
BN 570758



BN 570790



BN 570726



block diagram

Electrical characteristics

Part number	BN 570758	BN 570790	BN570726
Version	single	double	single
Frequency range			
Port 1	694 - 788 MHz		
Port 2	791 - 862 MHz		
Port 3	880 - 960 MHz		
Insertion loss	@Ambient temperature (+25°C)	≤ 0.6 dB @ 694 – 785 MHz / ≤ 1.2 dB @ 785 – 788 MHz ≤ 1.2 dB @ 791 – 794 MHz / ≤ 0.6 dB @ 794 – 862 MHz ≤ 0.6 dB @ 880 – 960 MHz	
	@Temperature range (-20°C to +55°C)	≤ 0.6 dB @ 694 – 785 MHz / ≤ 1.6 dB @ 785 – 788 MHz ≤ 1.6 dB @ 791 – 794 MHz / ≤ 0.6 dB @ 794 – 862 MHz ≤ 0.6 dB @ 880 – 960 MHz	
VSWR	≤ 1.25		
Isolation			
Port 1 ↔ Port 2	≥ 40 dB		
Port 1 ↔ Port 3	≥ 45 dB		
Port 2 ↔ Port 3	≥ 45 dB		
Group delay	≤ 190 ns		
Group delay variation LTE	≤ 20 ns (in any 180kHz)		
Group delay variation GSM	≤ 15 ns (@ 880 – 885 MHz)		
DC by pass (All ports to Common)	3A / AISG Signal (2.176 MHz) per AISG 2.0		
Lightning protection	3 kA, 10/350 µs pulse		
Passive intermodulation (IM3), 3rd order @ 2 x 20W	≤ -155 dBc		
Impedance	50 Ohm		
Power Rating	100 W (CW) max. per input port		

Mechanical characteristics

Connectors	4.3-10 female		7-16 female
Dimensions, approx. (without connectors)	325 x 255 x 61 mm (Width x Height x Depth)	325 x 255 x 111 mm (Width x Height x Depth)	325 x 255 x 61 mm (Width x Height x Depth)
Weight, approx.	8 kg	16 kg	8 kg
Color	Grey (RAL 7047)		
Wall / Mast mounting	Part of delivery		

Environmental conditions

Class. of environmental conditions	ETSI EN 300019-1-1 Class 1.2 ETSI EN 300019-1-2 Class 2.3 ETSI EN 300019-1-4 Class 4.1E
------------------------------------	---

SPINNER GmbH This document is proprietary to us. All rights reserved. Any use, transfer, or reproduction of this document or the know-how contained therein requires our express consent.

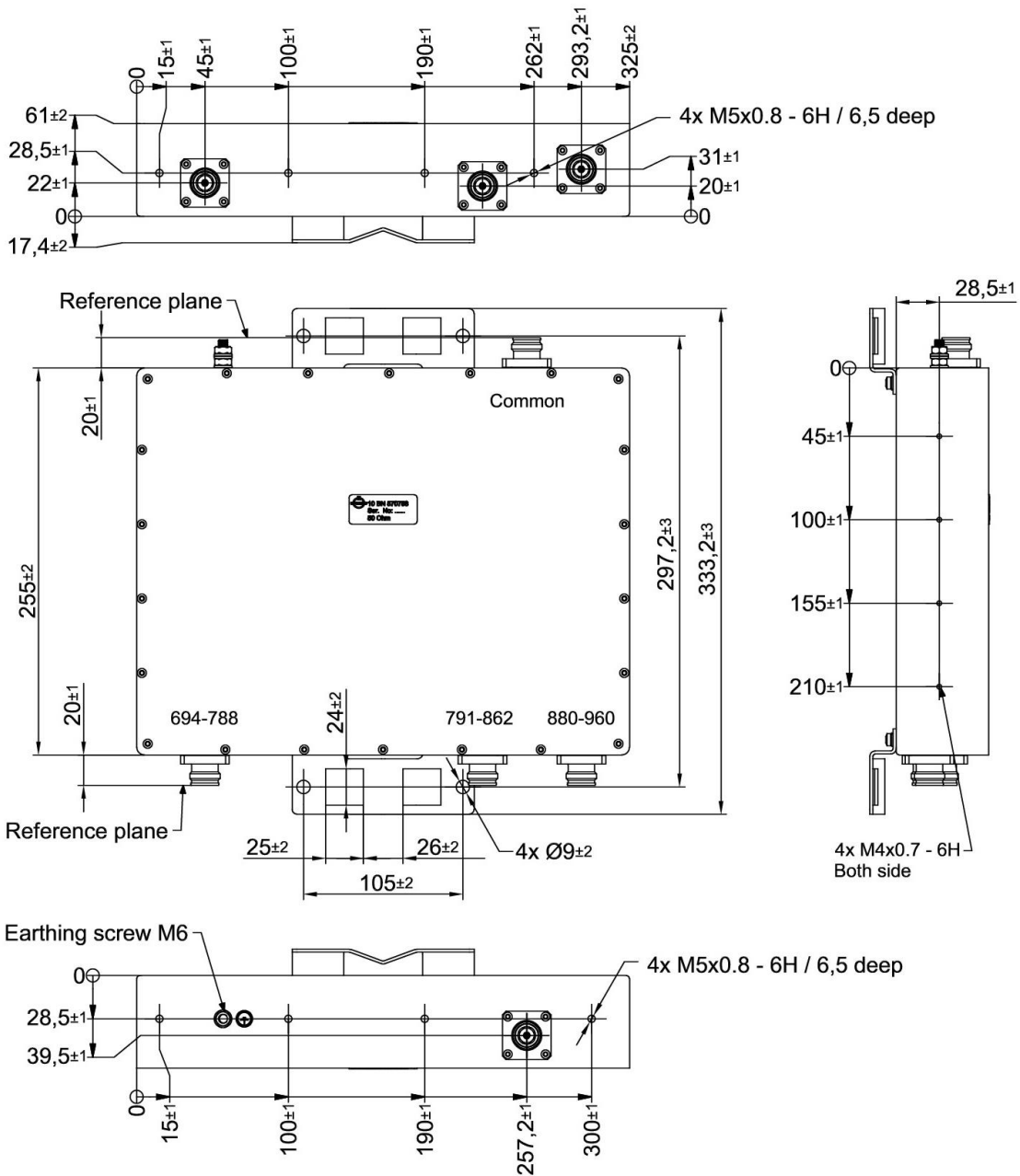
Template TD-00002Y

Triplexer 700 / 800 / 900

Degree of protection	IP 65 (Outdoor)
Operation Ambient temperature range	-40 °C to +55 °C
Storage Ambient temperature range	-40 °C to +85 °C
Relative humidity, max.	95% (non-condensing)

Outline (all dimensions in millimeter)

BN 570758



SPINNER GmbH  
 This document is proprietary to us.  
 All rights reserved. Any use, transfer, or reproduction of this document  
 or the know-how contained therein requires our express consent.

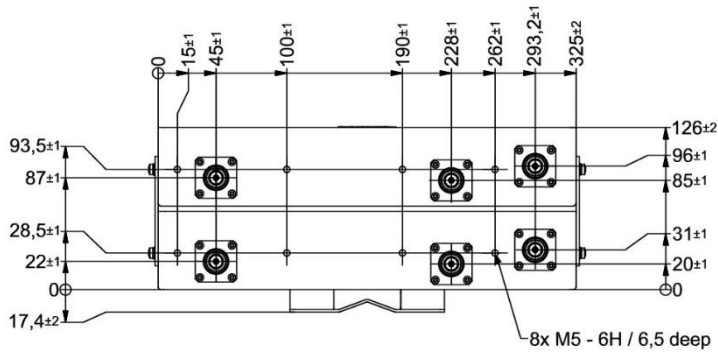
Template TD-00002Y

Standard:  
 4.3-10 female (50 ohms): IEC 61169-54

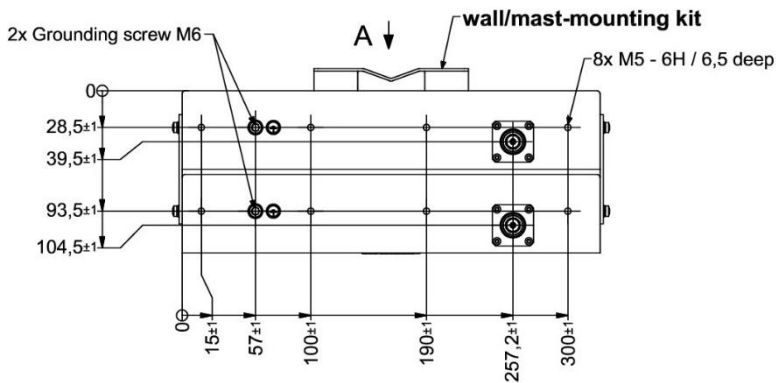
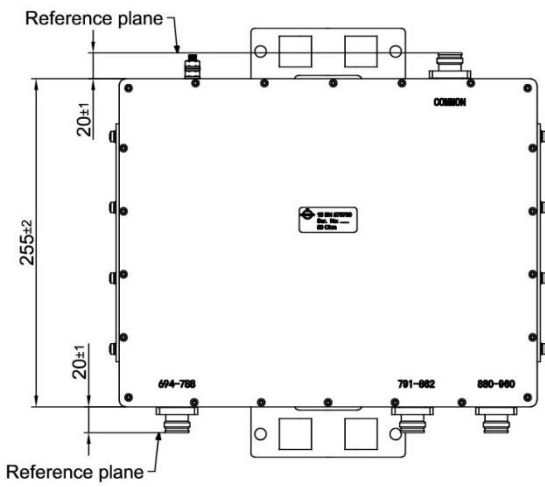
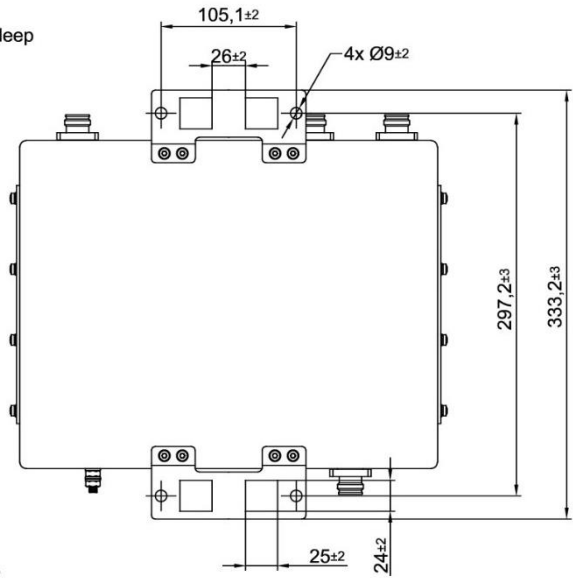
modifications reserved!

Triplexer 700 / 800 / 900

BN 570790



A ( 1 : 3.5 )



Standard:

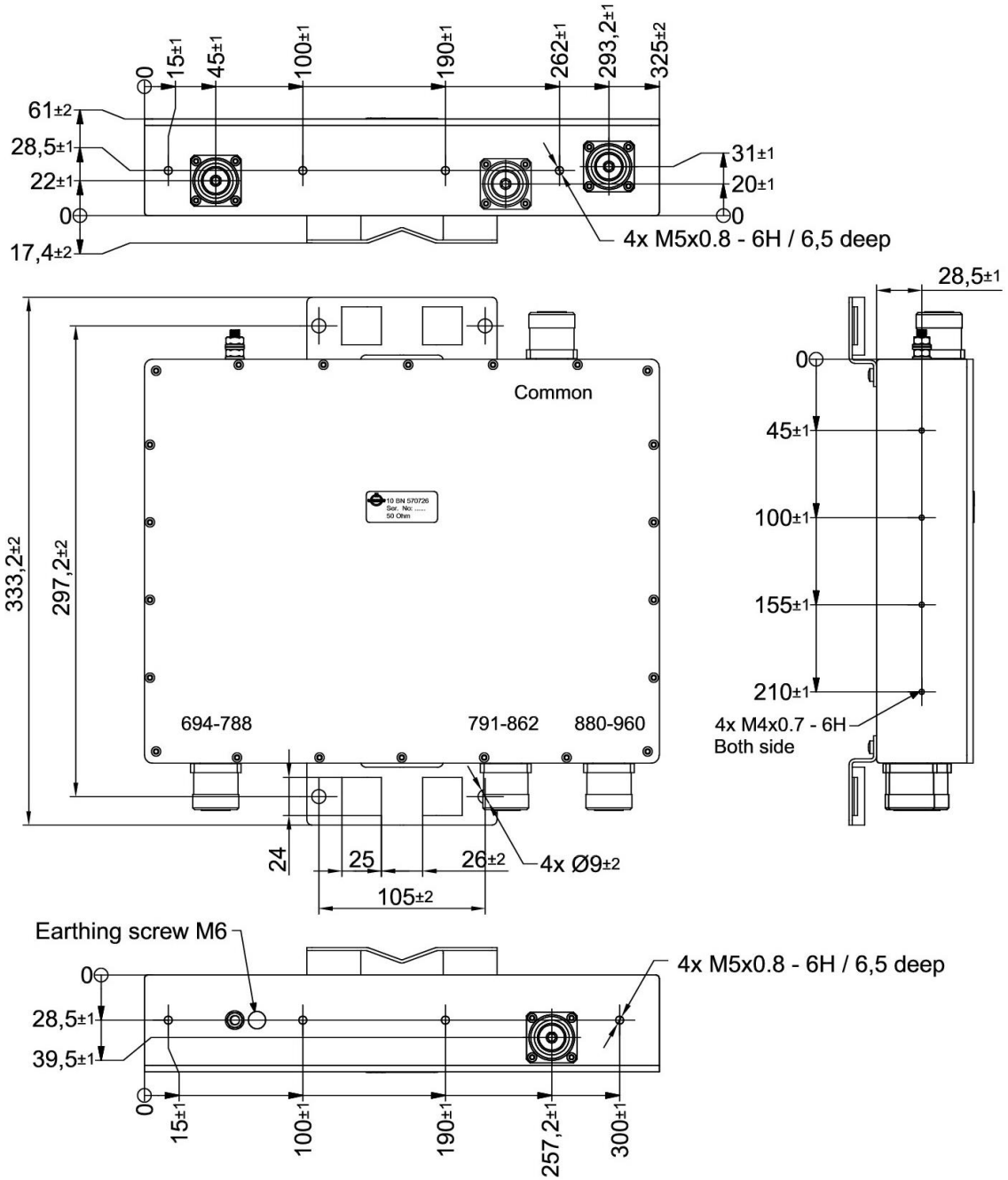
4.3-10 female (50 ohms): IEC 61169-54

modifications reserved!

SPINNER GmbH  
This document is proprietary to us.  
All rights reserved. Any use, transfer, or reproduction of this document  
or the know-how contained therein requires our express consent.

Triplexer 700 / 800 / 900

BN 570726



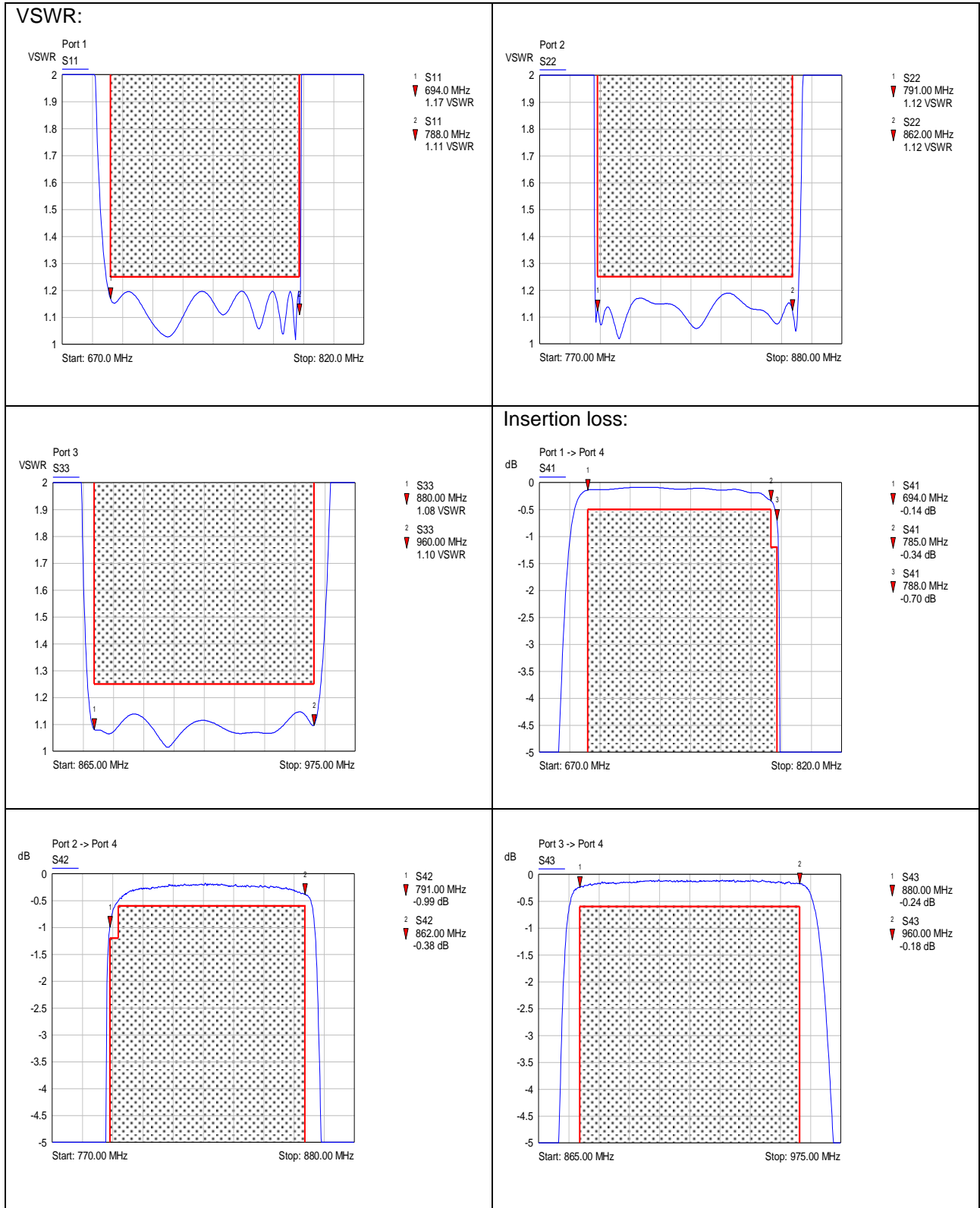
Standard:

7-16 female (50 ohms): EN 122190, IEC 61169-4

modifications reserved!

Triplexer 700 / 800 / 900

Measurements:

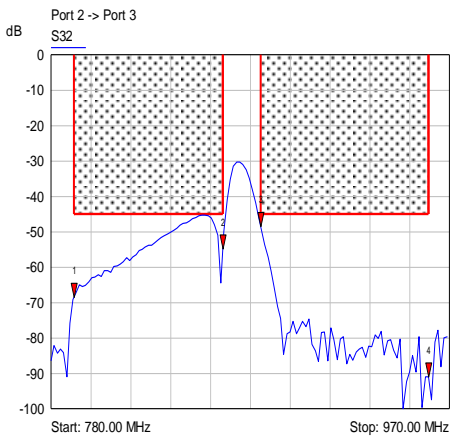
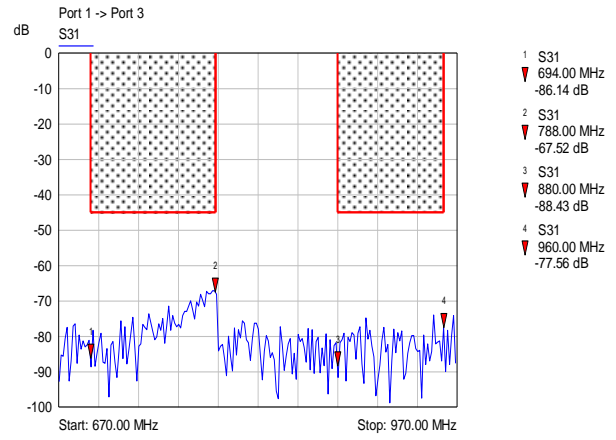
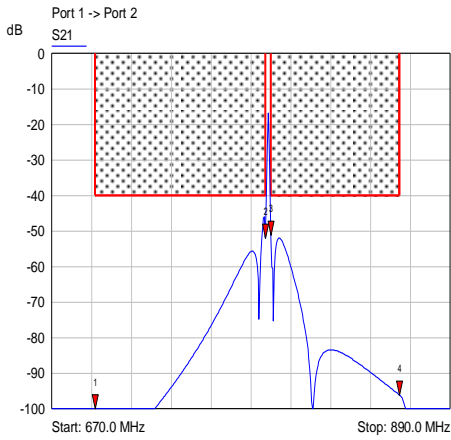


SPINNER GmbH  
 This document is proprietary to us.  
 All rights reserved. Any use, transfer, or reproduction of this document  
 or the know-how contained therein requires our express consent.

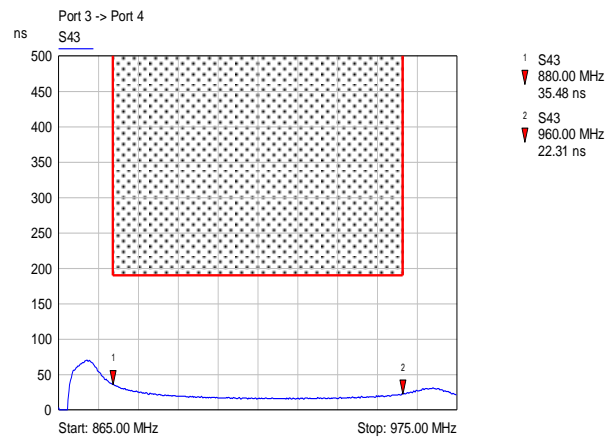
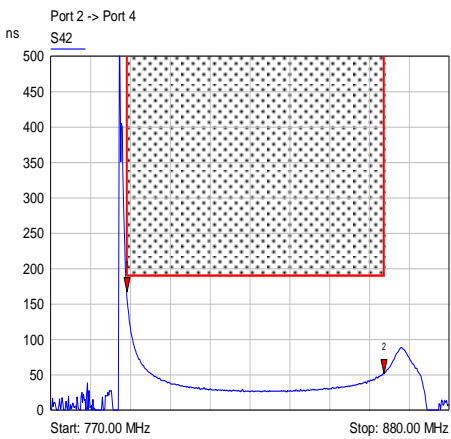
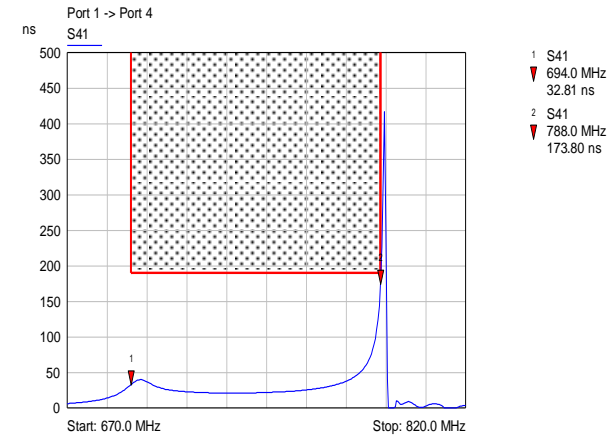
Template TD-00002Y

Triplexer 700 / 800 / 900

Isolation:



Group delay:



SPINNER GmbH This document is proprietary to us. All rights reserved. Any use, transfer, or reproduction of this document or the know-how contained therein requires our express consent.

Template TD-00002Y