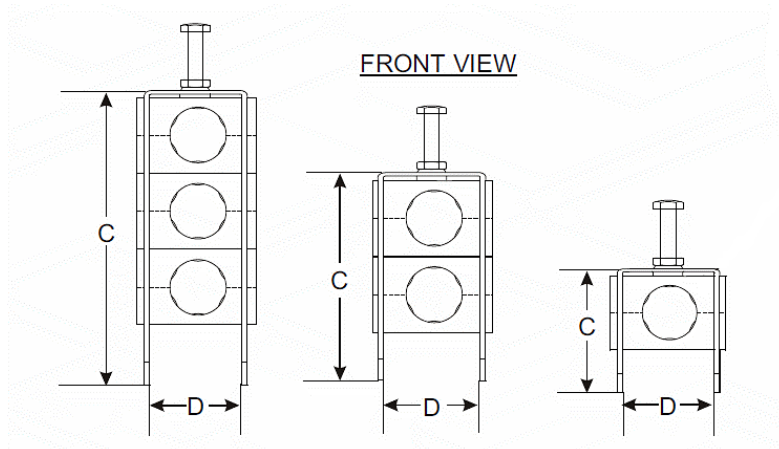
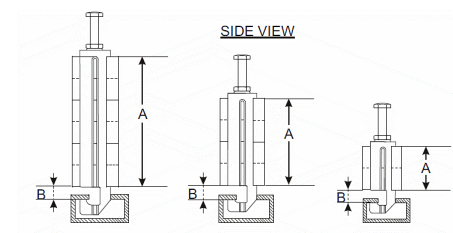


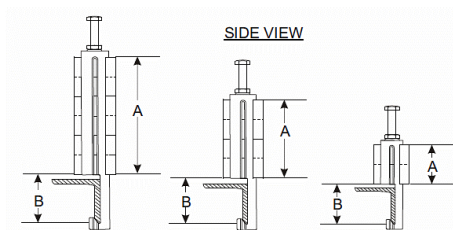
LOCKING BLOCK HANGER
HFF...LB.-SG.-
SPINNER FlexFix™



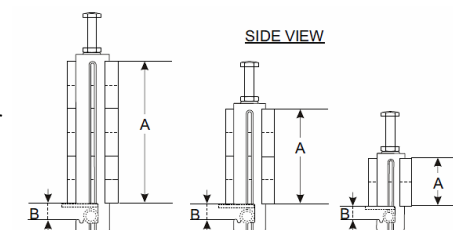
C-rail member



Angle member



Round / Flat member



TYPES: C – C-RAIL MEMBER / A - ANGLE MEMBER / RF - ROUND/FLAT MEMBER							
ARTICLE		CABLE	CABLE DIA.	HEIGHT A	HEIGHT B	HEIGHT C	WIDTH D
Single stack for 1 cable							
HFFLF012LB1-SG-C/A/RF		LF 1/2"	15-16 mm	38.1 mm	14.3 mm	84.1 mm	24 mm
HFFLF078LB1-SG-		LF 7/8"	27-30 mm	38.1 mm	14.3 mm	84.1 mm	37 mm
HFFLF114LB1-SG-		LF 1 1/4"	39-42 mm	63.5 mm	14.3 mm	109.6 mm	48 mm
HFFLF158LB1-SG-		LF 1 5/8"	50-52 mm	63.5 mm	14.3 mm	109.6 mm	60 mm
Double stack for 2 cables							
HFFLF012LB2-SG-		LF 1/2"	15-16 mm	76.2 mm	14.3 mm	122.3 mm	24 mm
HFFLF078LB2-SG-		LF 7/8"	27-30 mm	76.2 mm	14.3 mm	122.3 mm	37 mm
HFFLF114LB2-SG-		LF 1 1/4"	39-42 mm	127.0 mm	14.3 mm	173.1 mm	48 mm
HFFLF158LB2-SG-		LF 1 5/8"	50-52 mm	127.0 mm	14.3 mm	173.1 mm	60 mm
Triple stack for 3 cables							
HFFLF012LB3-SG-		LF 1/2"	15-16 mm	114.3 mm	14.3 mm	160.4 mm	24 mm
HFFLF078LB3-SG-		LF 7/8"	27-30 mm	114.3 mm	14.3 mm	160.4 mm	37 mm
HFFLF114LB3-SG-		LF 1 1/4"	39-42 mm	190.5 mm	14.3 mm	236.6 mm	48 mm
HFFLF158LB3-SG-		LF 1 5/8"	50-52 mm	190.5 mm	14.3 mm	236.6 mm	60 mm
MATERIAL		FEATURES					
Hanger body	Fiber reinforced Polypropylene (black)						
Mounting material	Stainless steel						
Resistance		U.V. Weather Chemical					
Temperature range		-40 °C to +85 °C -40 °F to +185 °F					