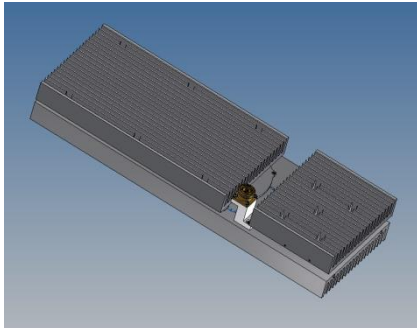
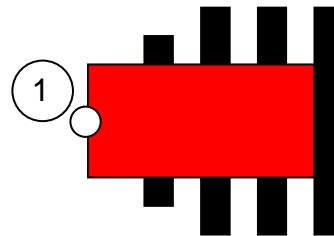


Coaxial Load 400W low IM



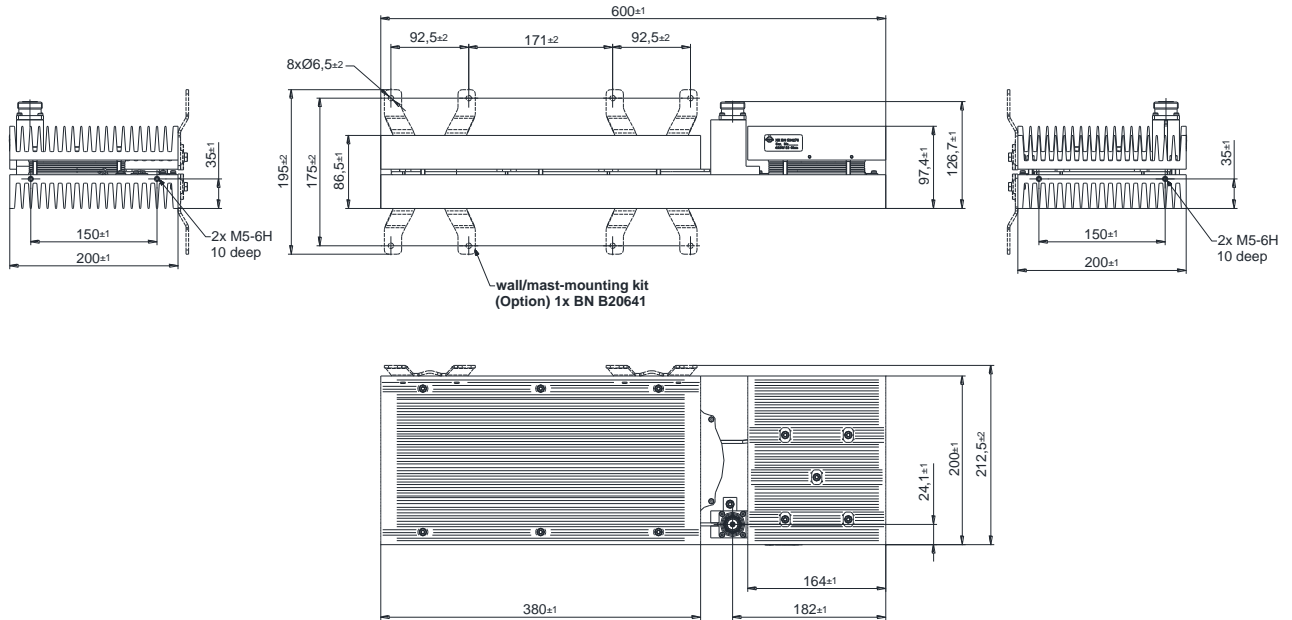
not binding



block diagram

Part number	BN 534276		
Connector:	7-16 socket (50 Ohms)		
Frequency range:	380 - 694 MHz	694 - 2700 MHz	2700 - 4000 MHz
Power rating:	≤ 250 W	≤ 400 W	≤ 250 W
Intermodulation products: 3rd order @ 2 x 20 W	≤ -160 dBc @ 380 - 2700 MHz		
VSWR:	≤ 1.25 @ 380 - 694 MHz ≤ 1.15 @ 694 - 4000 MHz		
Temperature range:	-5 °C – +55 °C		
Degree of protection: mated / 1bar, 1h, ≤18°C	IP 20		
Environmental conditions:	ETSI EN 300019-1-1 Class 1.2 ETSI EN 300019-1-2 Class 2.3 ETSI EN 300019-1-3 Class 3.3		
Weight:	approx. 14.5 kg		
Wall / Mast mounting	to be ordered separately under BN B20641		

Dimensions:



Standard:

7-16 female (50 ohms) : EN 122190, IEC 61169-4

modifications reserved

Measurements:

