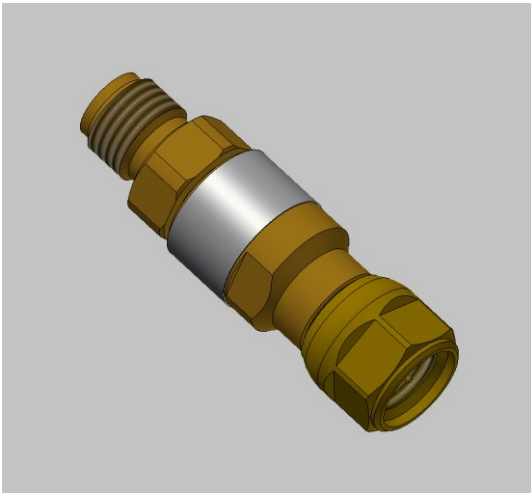


Low-pass filter || BN 402721



Annex: 402721-0E Issue A

**Radio frequency characteristics**

Interface type	SMA plug / socket per DIN EN 122 110	
Filter belt	Passband	Stopband
Frequency range	DC to 3 GHz	27 to 31 GHz
Impedance	50 Ω	50 Ω
VSWR, max. / typ	1.25 / 1.15	
Insertion loss, max.	0.3 dB	>20 dB

**Mechanical data**

Center conductor material / surface finish	CuBe / gold-plated
Outer conductor material / surface finish	Copper alloy / gold-plated
Insulation	PTFE
Weight, approx.	0.01 kg
Marking	adhesive label

**Environmental conditions**

<b>Operation</b>	
Ambient temperature range	-40°C to +85°C
<b>Storage</b>	
Ambient temperature range	-55°C to +85°C
Relative humidity	95% (non-condensing)

**Delivery**

Packaging	transparent plastic tube
-----------	--------------------------