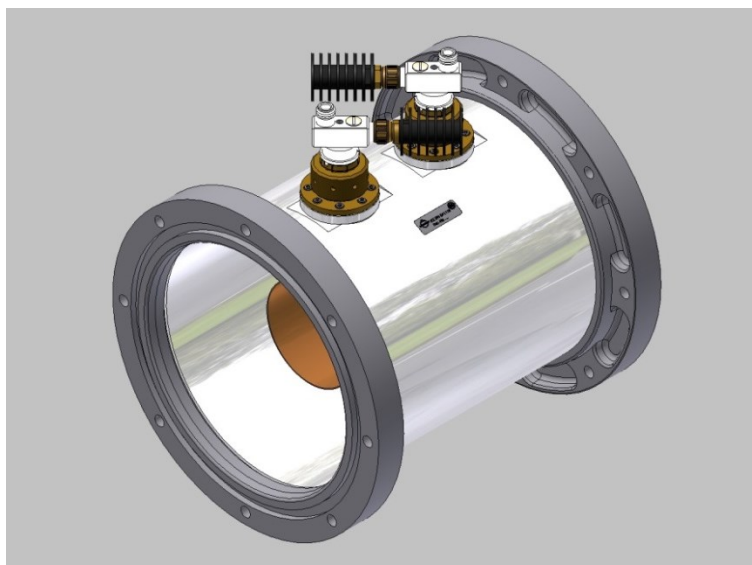


RL 9 3/16" EIA directional coupler with probes || BN 541123



Radio frequency characteristics

	main line	secondary line (probe)
Interface type / material / surface finish	2x EIA 9 3/16" female (339 IEC 50-233-2) outer conductor aluminum alloy inner conductor copper alloy / silver plated	2x type N 50 Ω female (IEC 61169-16) outer and inner conductor copper alloy / silver plated
Frequency tuning range	20 to 175 MHz	
Average power capability, max.	see attached diagram*	
Insertion loss, typ.	see attached diagram	
VSWR, max.	1.02 @ 20 to 120 MHz 1.04 @ 120 to 175 MHz	1.05
Coupling attenuation forward	55 to 81 dB @ 175 MHz (adjustable) 58 to 84 dB @ 120 MHz (adjustable) 65 to 91 dB @ 50 MHz (adjustable)	
Coupling attenuation reflected	55 to 81 dB @ 175 MHz (adjustable) 58 to 84 dB @ 120 MHz (adjustable) 65 to 91 dB @ 50 MHz (adjustable)	
Deviation coupling attenuation	± 0,3 dB @ 10 MHz bandwidth	
Directivity, min.	30 dB	

* Conditions: - Waveguide pressurized with dry air or N₂ at pressure according attached diagram

General mechanical data

Differential operating pressure, max.	3·10 ⁵ Pa (3 bar)
Leakage rate, max.	5·10 ⁻⁴ mbar·l/s @ nominal differential pressure
Material, main line	aluminum alloy (outer conductor), copper alloy (inner conductor)
Surface finish, main line	painting on request
Material, probe	copper alloy, stainless steel, PE, PS-X, PTFE
Surface finish, probe	silver plated
Weight, approx.	10 kg
Marking	adhesive label

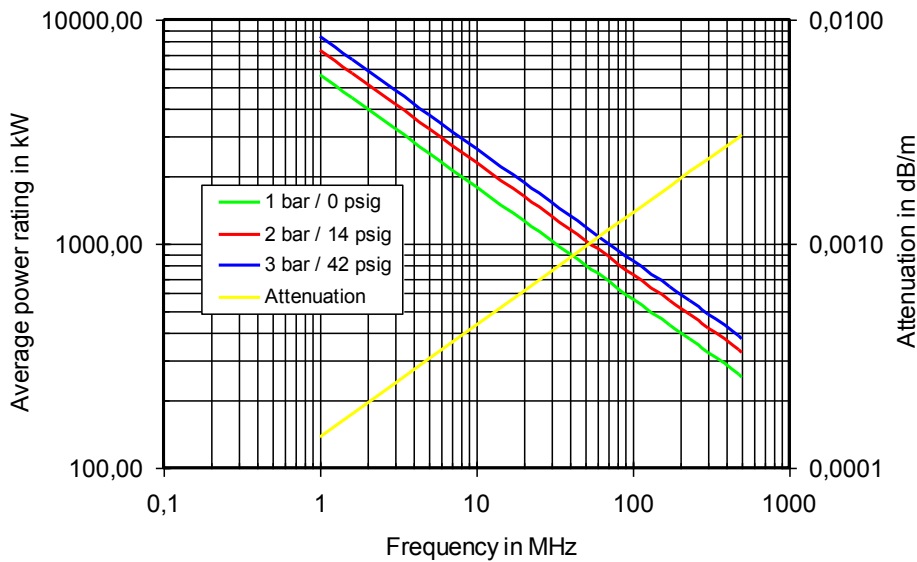
Template TD-00002H

RL 9 3/16" EIA directional coupler with probes || BN 541123

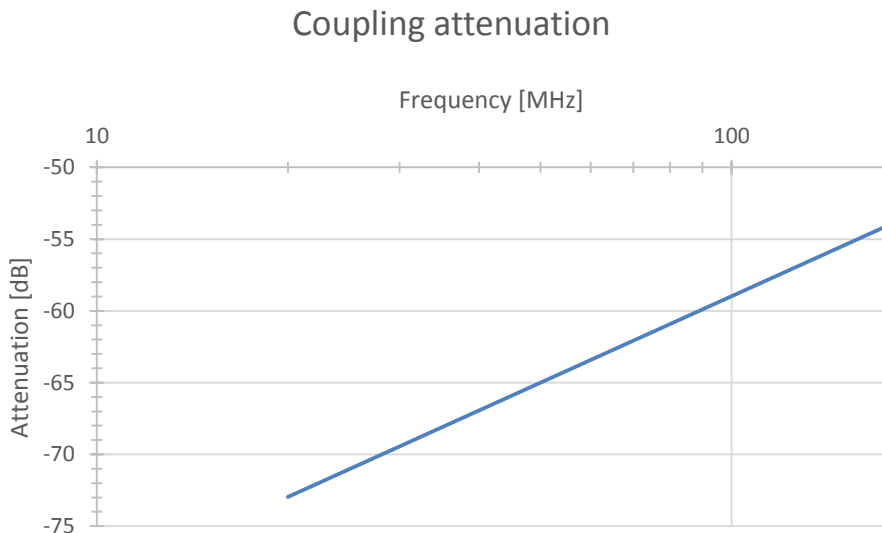
General environmental conditions

Operation	
Ambient temperature range	+10 to +50 °C
Relative humidity, max.	95% (condensation not permitted)
IP protection level	IP60 per EN 60529 (all interfaces connected with appropriate gaskets)
Storage	
Ambient temperature range	-20 to +50°C
Relative humidity, max.	95% (condensation not permitted)

Power rating and attenuation for RL 9 3/16" EIA

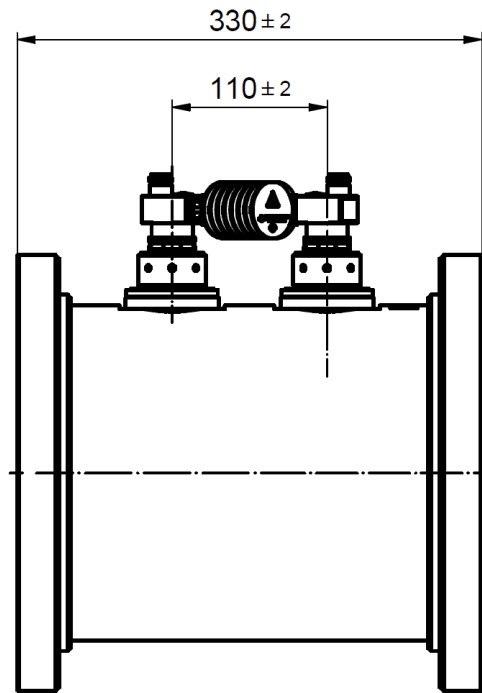


Coupling attenuation example (reference -65 dB @ 50 MHz)



RL 9 3/16" EIA directional coupler with probes || BN 541123

Outline and dimensions (all dimensions in millimeters)



9 3/16" 50 Ohms

