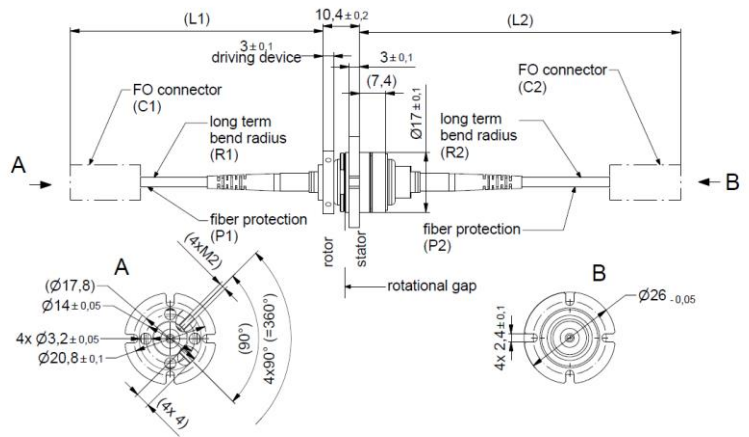
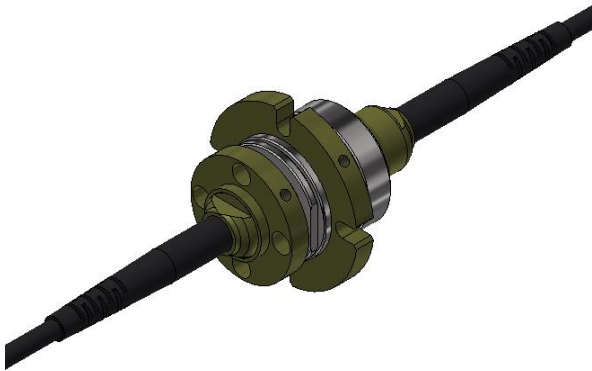


Rotary Joint || BN 549389C0101



all dimensions in millimeter

Fiber optic channel characteristics

Channels	1 CH	
Channel designation	1	
Fiber type	Singlemode E9 / 125 μm (SMF-28e)	
Side	Rotor	Stator
FO connector (C1 / C2)	LC-APC	LC-APC
Fiber protection (P1 / P2)	900 μm buffer	900 μm buffer
Fiber length (L1 / L2)	4500 ±150 mm	4500 ±150 mm
Long term bend radius, min. (R1 / R2)	30 mm	30 mm
Wavelength	1550 nm	
Average power capability, max.	200 mW / 23 dBm	
Insertion loss, max./ typ.	2.0 dB / 1.0 dB	
Insertion loss variation over rotation, max. / typ.	1.0 dB / 0.5 dB	

Rotary Joint || BN 549389C0101

**Mechanical characteristics**

Rotating speed, max.	30 rpm
Life, min.	200 x 10 <sup>6</sup> revolutions
Torque (room temperature), max.	0.1 Nm @ rotation
Interface loads, max.	no loads allowed
Case material	Stainless steel, Arcap AP 1D
Case surface finish	no finish
IP protection level	IP68 per EN 60529 (all interfaces connected with appropriate gaskets)
Weight, approx.	0.06 kg
Marking	laser engraving (SPINNER logo)

**Environmental conditions**

<b>Operation</b>	
Ambient temperature range	-40 °C to +85 °C
Relative humidity, max.	99 %
<b>Storage</b>	
Ambient temperature range	-40 °C to +85 °C
Relative humidity, max.	99 %

**Applicable documents**

Technical information	"Rotary Joints – Glossary", Technical Document TD-00021, Spinner GmbH
-----------------------	---