

## Rotary Joint | BN 549758C1200

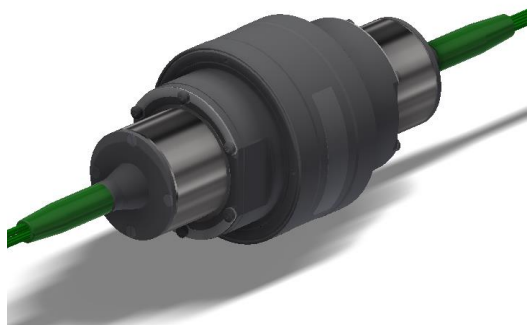
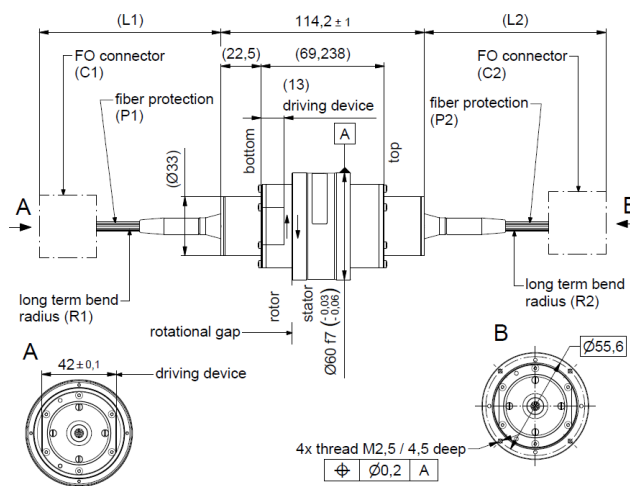


image similar



all dimensions in mm

### Fiber optic characteristics

<b>Channels</b>	<b>12 CH</b>	
Channel designation	1 to 12	
Fiber type	Singlemode E9 / 125 µm	
Side	Rotor	Stator
FO connector (C1 / C2)	LC/APC	LC/APC
Fiber protection (P1 / P2)	900 µm buffer	900 µm buffer
Fiber length (L1 / L2)	4500 ±150 mm	4500 ±150 mm
Long term bending radius, min. (R1 / R2)	30 mm	30 mm
Wavelength	1310 nm / 1550 nm	
Average power rating, max.	200 mW / 23 dBm	
Return loss, min.	50 dB	
Insertion loss, max.	3.5 dB	
Insertion loss variation with rotation, max.	1.5 dB	
Cross talk, min.	50 dB (between all channels)	

SPINNER GmbH  
 This document is proprietary to us.  
 All rights reserved. Any use, transfer, or reproduction of this document  
 or the know-how contained therein requires our express consent.



## Rotary Joint | BN 549758C1200

### Mechanical characteristics

Rotating speed, max.	150 rpm
Life, min.	200 x 10 <sup>6</sup> revolutions
Torque (room temperature), max.	0.15 Nm @ rotation
Interface loads, max.	±0.4 Nm bending moment
Case material	stainless steel and copper alloy, corrosion resistant
Case surface finish	no finish
IP protection level	IP50 per EN 60529 (all interfaces connected with appropriate gaskets)
Weight, approx.	1.5 kg
Marking	adhesive label (SPINNER logo)

### Environmental conditions

<b>Operation</b>	
Ambient temperature range	-40 °C to +85 °C
Relative humidity, max.	95% (non-condensing)
<b>Storage</b>	
Ambient temperature range	-40 °C to +85 °C
Relative humidity, max.	95% (non-condensing)

### Applicable documents

Technical information	“Rotary Joints – Glossary”, technical document TD-00021, Spinner GmbH
Application note	“Handling of Optical Fibers and Fiber Optical Rotary Joints”, technical document TD-00283, Spinner GmbH

SPINNER GmbH  
 This document is proprietary to us.  
 All rights reserved. Any use, transfer, or reproduction of this document  
 or the know-how contained therein requires our express consent.

Template TD-00015.docx