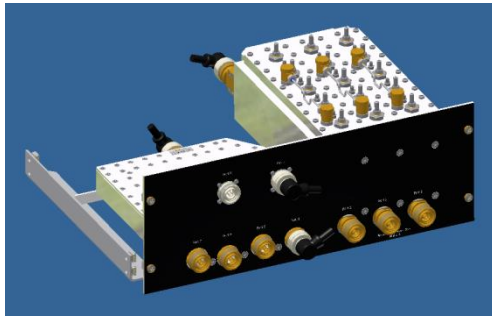
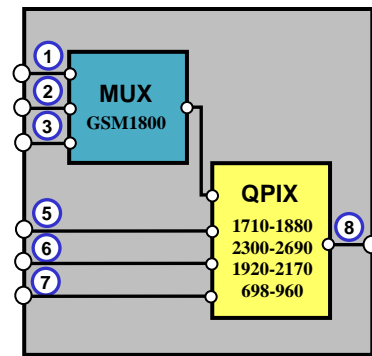


MULTIPLEXER - QUADRUPLER UNIT

For combination of GSM900, GSM1800, UMTS, and LTE2.3-2.6 signals



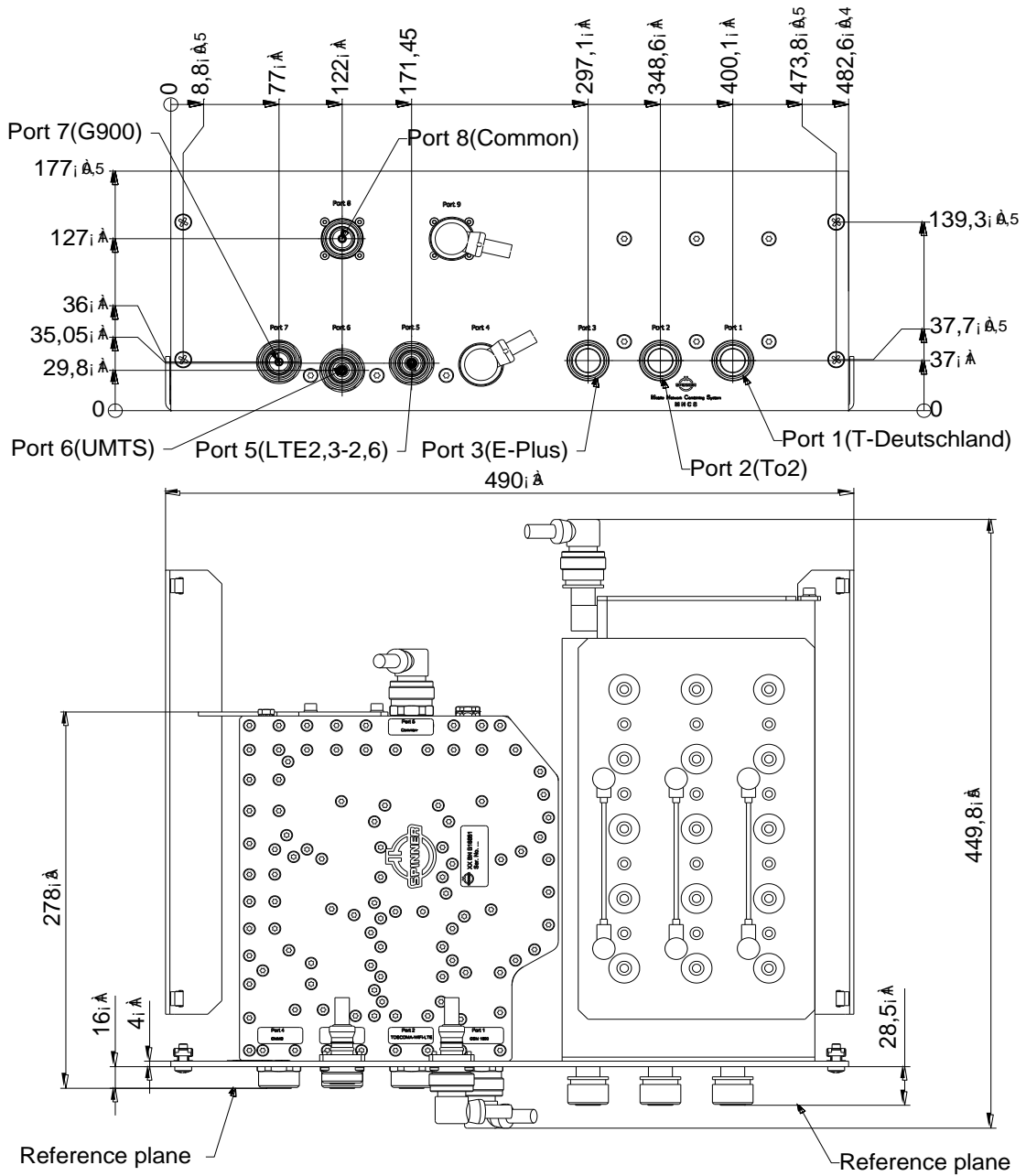
not binding



block diagram

Part number		BN 570468
Consisting of		1pcs. Multiplexer (BN B16556-U) 1pcs. Quadruplexer (BN 570593)
Connectors		7-16 female (50 Ohms)
Frequency range	Port 1: Port 2: Port 3: Port 5: Port 6: Port 7: Port 8:	T-Deutschland 1710-1730.1 / 1805-1825.1 MHz To2 1735.1-1752.5 / 1830.1-1847.5 MHz E-Plus 1758.1-1780.5 / 1853.1-1875.5 MHz LTE2.3-2.6 2300-2690 MHz UMTS 1920-2170 MHz GSM900 698-960 MHz Common Output
Insertion loss <small>(BTS/NODB-Ports -> common ports)</small>	Port 1, 2, 3 → Port 8	≤ 3.0 dB
	Port 5 → Port 8	≤ 0.5 dB
	Port 6 → Port 8	≤ 0.8 dB
	Port 7 → Port 8	≤ 0.3 dB
Isolation	Intraband (TX G1800↔G1800)	≥ 30 dB
	Interband	≥ 50 dB
VSWR: <small>(BTS/NODB-Ports, TX)</small>		≤ 1.4 (typ. 1.25)
IM – value (3rd order @ 2 x 20 W)		≤ -150 dBc typical: ≤ -160dBc
Power rating		100 W CW per Port
Degree of protection		IP 20
Environmental conditions		ETSI EN 300019-1-1 Class 1.2 ETSI EN 300019-1-2 Class 2.3 ETSI EN 300019-1-4 Class 3.3
Weight		16 kg
Wall / Mast mounting		part of delivery
Temperature range		- 40°C – + 60°C

Dimensions:

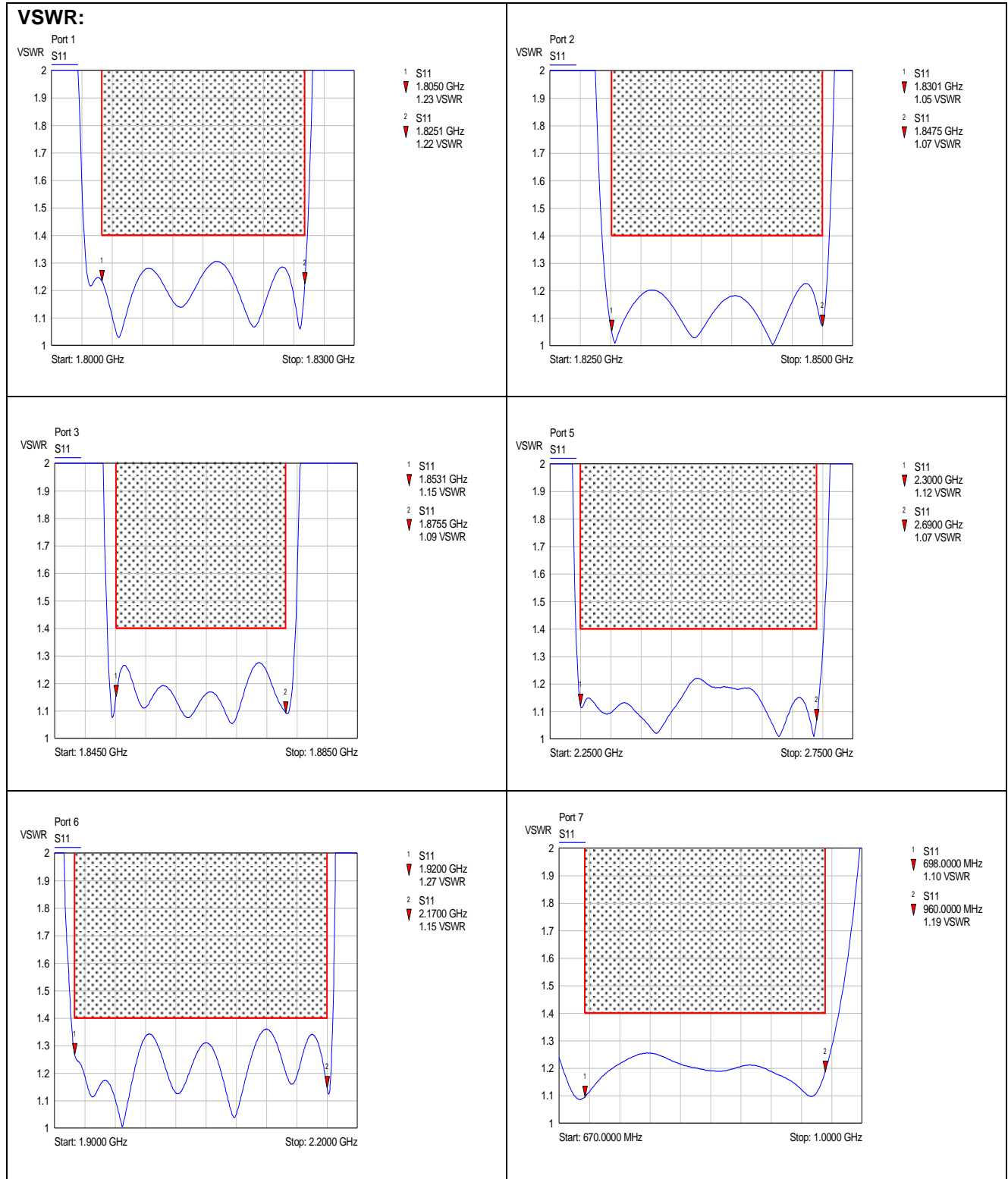


Standard:

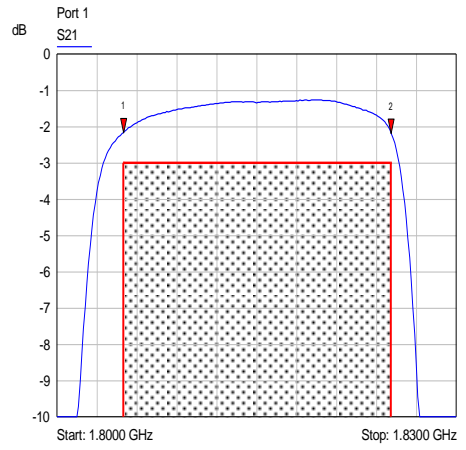
7-16 female (50 ohms): CECC 22190, IEC 61169-4

modifications reserved

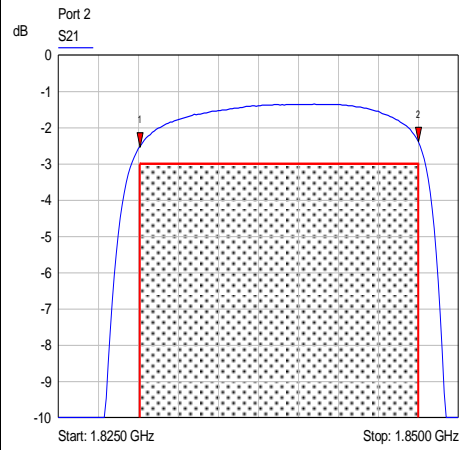
Measurements:



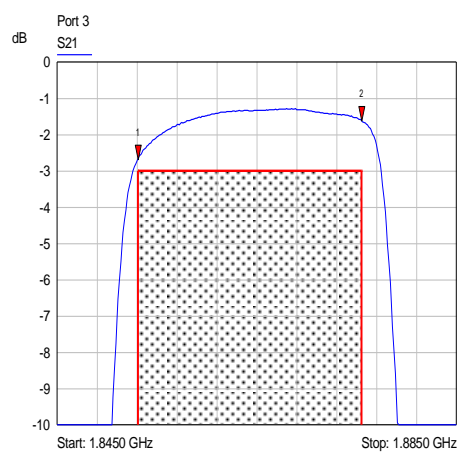
Insertion Loss



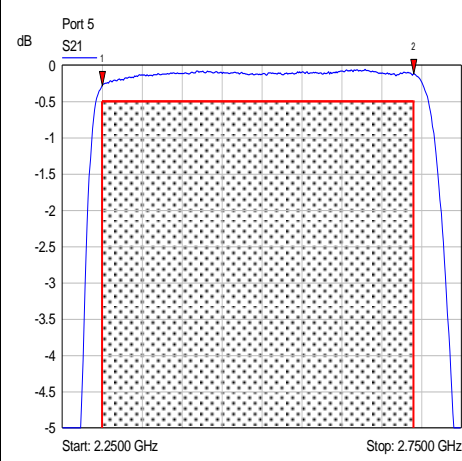
- 1 S21
▼ 1.8050 GHz
-2.17 dB
- 2 S21
▼ 1.8251 GHz
-2.18 dB



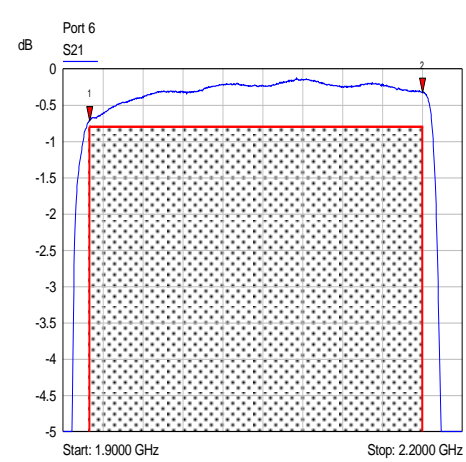
- 1 S21
▼ 1.8301 GHz
-2.52 dB
- 2 S21
▼ 1.8475 GHz
-2.39 dB



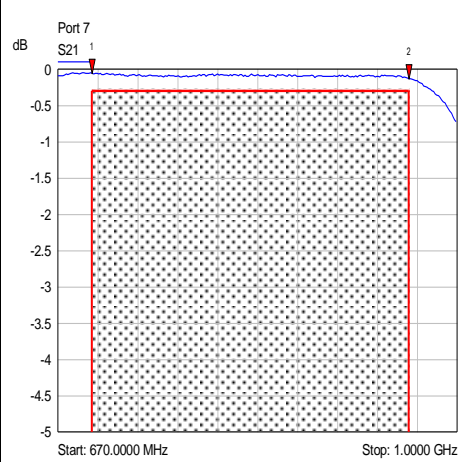
- 1 S21
▼ 1.8531 GHz
-2.68 dB
- 2 S21
▼ 1.8755 GHz
-1.61 dB



- 1 S21
▼ 2.3000 GHz
-0.29 dB
- 2 S21
▼ 2.6900 GHz
-0.12 dB



- 1 S21
▼ 1.9200 GHz
-0.72 dB
- 2 S21
▼ 2.1700 GHz
-0.33 dB



- 1 S21
▼ 698.0000 MHz
-0.06 dB
- 2 S21
▼ 960.0000 MHz
-0.13 dB

