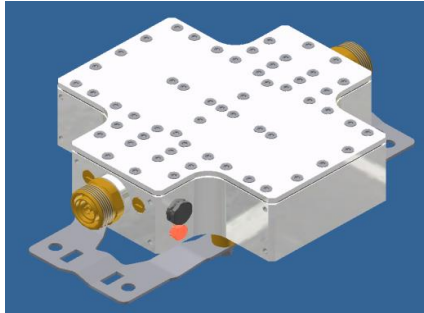
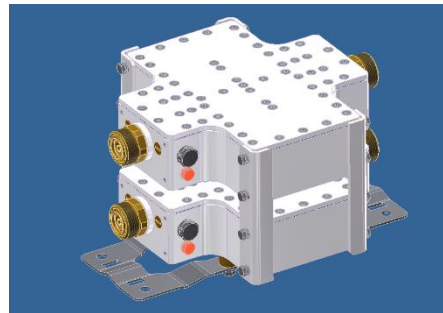


UL/DL Filter LTE 2.6 4 cavities



Single Unit



Double Unit



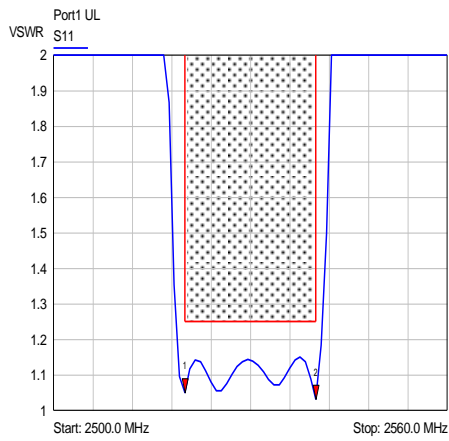
Block Diagram

Part number		BN 570573	BN 610014
Version		single	double
Connectors		7-16 socket (50 Ohms)	
Frequency range	LTE2.6	2500 – 2570 MHz (Uplink) 2620 – 2690 MHz (Downlink)	
Tuning example	Passband	2520 – 2540 MHz (Uplink) 2640 – 2660 MHz (Downlink)	
Frequency range	Rejection band	2500 – 2512 MHz / 2548 – 2570 MHz (Uplink) 2620 – 2632 MHz / 2669 – 2690 MHz (Downlink)	
Factory tunable bandwidth range		10 - 20 MHz	
Out of Band Rejection	Pass band = Band gap	LTE2.6	
	Pass band = 2 x Band gap	≥ 35 dB	
	2 x Pass band = Band gap	≥ 20 dB	
Insertion loss	Pass band = Band gap	≥ 50 dB	
	Pass band = 2 x Band gap	≤ 1.4 dB	
	2 x Pass band = Band gap		
VSWR		≤ 1.25	
Power rating		100 W (CW)	
Intermodulation products in RX band with 2 x 43dBm (20 W)		≤ -150 dBc typical: ≤ -160 dBc	
Degree of protection		IP 65	
Environmental conditions		ETSI EN 300019-1-1 Class 1.2 ETSI EN 300019-1-2 Class 2.3 ETSI EN 300019-1-3 Class 4.1E	

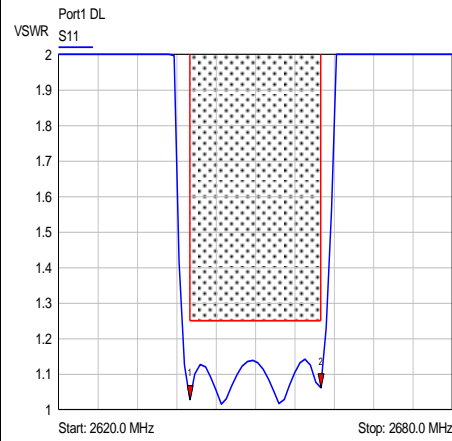
Wall / Mast mounting	BN 570573 to be ordered separately under B16603	BN 610014 part of delivery
Weight	2.9 kg	6.4 kg
Temperature range	-25 °C – +65 °C	

Measurements:

VSWR:

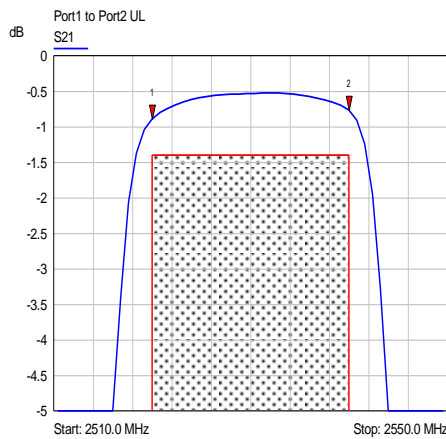


- 1 S11
▼ 2520.0 MHz
1.05 VSWR
- 2 S11
▼ 2540.0 MHz
1.03 VSWR

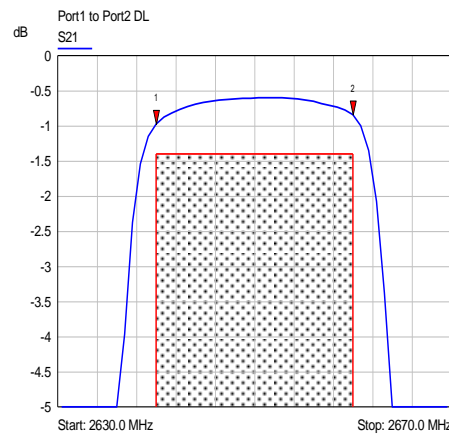


- 1 S11
▼ 2640.0 MHz
1.03 VSWR
- 2 S11
▼ 2660.0 MHz
1.06 VSWR

Insertion loss:

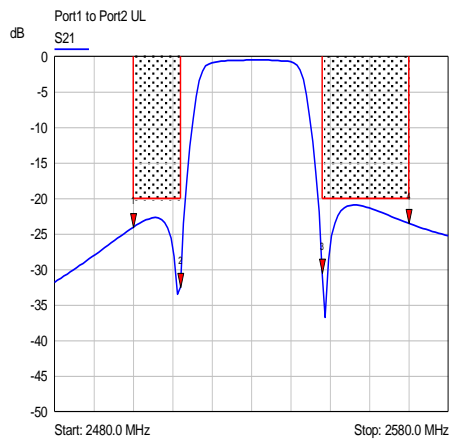


- 1 S21
▼ 2520.0 MHz
-0.89 dB
- 2 S21
▼ 2540.0 MHz
-0.77 dB

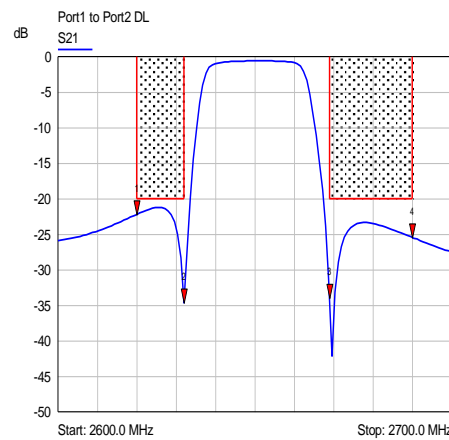


- 1 S21
▼ 2640.0 MHz
-0.97 dB
- 2 S21
▼ 2660.0 MHz
-0.84 dB

Stopband rejection:



- 1 S21
▼ 2500.0 MHz
-24.05 dB
- 2 S21
▼ 2512.0 MHz
-32.49 dB
- 3 S21
▼ 2548.0 MHz
-30.52 dB
- 4 S21
▼ 2570.0 MHz
-23.51 dB



- 1 S21
▼ 2620.0 MHz
-22.21 dB
- 2 S21
▼ 2632.0 MHz
-34.70 dB
- 3 S21
▼ 2669.0 MHz
-33.95 dB
- 4 S21
▼ 2690.0 MHz
-25.45 dB