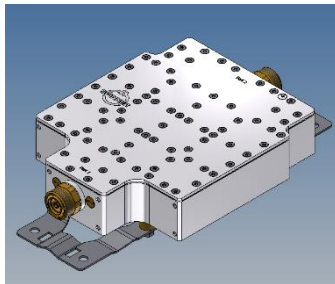
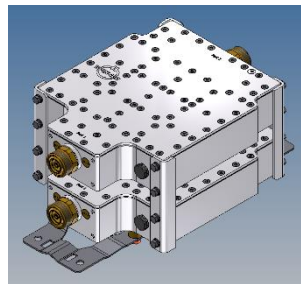


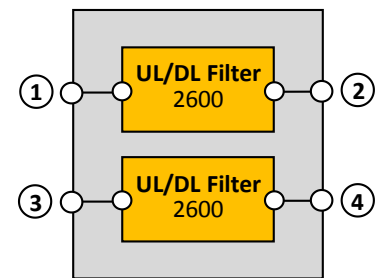
UL/DL Filter LTE 2.6 6 cavities



Single Unit



Double Unit



Block Diagram

Part number		BN 570574	BN 570674
Version		single	double
Connectors		7-16 socket (50 Ohms)	
Frequency range	LTE2.6	2500 – 2570 MHz (Uplink) 2620 – 2690 MHz (Downlink)	
Tuning example	Passband	2520 – 2530 MHz (Uplink) 2640 – 2650 MHz (Downlink)	
	Rejection band	2500 – 2510 MHz / 2540 – 2550 MHz (Uplink) 2620 – 2630 MHz / 2660 – 2670 MHz (Downlink)	
Factory tunable bandwidth range		10 - 20 MHz	
Out of Band Rejection	Pass band = Band gap	LTE2.6	
	Pass band = 2 x Band gap	≥ 50 dB	
	2 x Pass band = Band gap	≥ 40 dB	
Insertion loss	Pass band = Band gap	≤ 3 dB (typ. 2.5 dB)	
	Pass band = 2 x Band gap		
	2 x Pass band = Band gap		
VSWR		≤ 1.25	
Power rating		100 W (CW)	
Intermodulation products in RX band with 2 x 43dBm (20 W)		≤ -150 dBc typical: ≤ -160 dBc	
Degree of protection		IP 65	
Environmental conditions		ETSI EN 300019-1-1 Class 1.2 ETSI EN 300019-1-2 Class 2.3 ETSI EN 300019-1-3 Class 4.1E	
Wall / Mast mounting		BN 570574	BN 570674
		to be ordered separately under B16603	part of delivery
Weight		5 kg	10 kg
Temperature range		-25 °C – +65 °C	