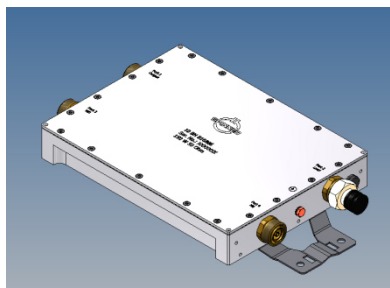
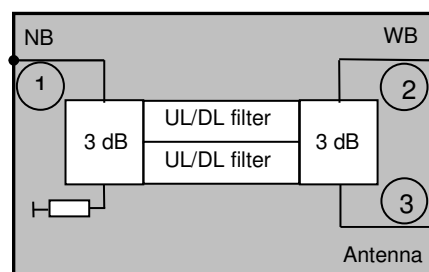


CIB Combiner GSM1800



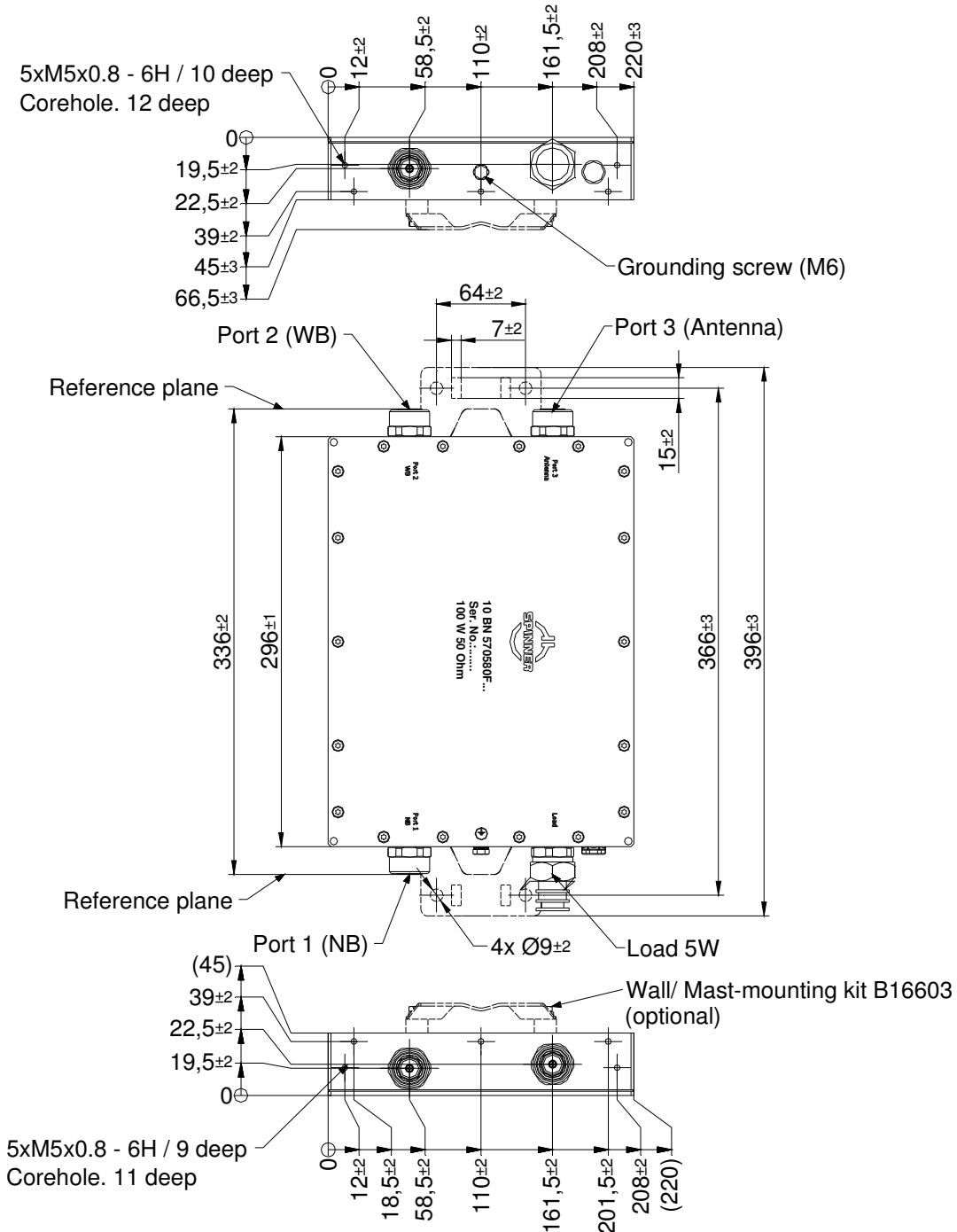
not binding



block diagram

Part number	BN 570580	
Connectors	7-16 socket (50 Ohms)	
Frequency range	port 1(NB)	1710 – 1785 MHz (RX1) / 1805 – 1880 MHz (TX1)
	port 2(WB)	1710 – 1785 MHz (RX2) / 1805 – 1880 MHz (TX2)
Bandwidth(BW)	port 1, 2	10 – 20 MHz tunable
Band gap(BG)	between TX1 and TX2	2.5 MHz min. (tuning example: Port 1: 1710.0-1730.0 / 1805.0-1825.0 MHz Port 2: 1732.5-1752.5 / 1827.5-1847.5 MHz)
Insertion loss	port 1 → port 3 port 2 → port 3	1.6 dB typ. / 2.0 dB max. @ edge of the band 1.6 dB typ. / 2.0 dB max. @ edge of the band
Isolation	port 1 → port 2(TX1 → TX2) port 2 → port 1(TX2 → TX1)	33 dB typ. / 30 dB min. 33 dB typ. / 30 dB min.
VSWR	port 1 port 2	1.25 max. 1.25 max.
Power rating	100 W (CW) per input	
IM – value 3rd order @ 2 x 20 W	≤ -155 dBc	
Degree of protection (mated)	IP 65	
Environmental conditions	ETSI EN 300019-1-1 Class 1.2 ETSI EN 300019-1-2 Class 2.3 ETSI EN 300019-1-4 Class 4.1E	
Weight	Approx. 5.8 kg	
Wall / Mast mounting	to be ordered separately under BN B16603	
Temperature range	-5 °C – +45 °C	

Dimensions:



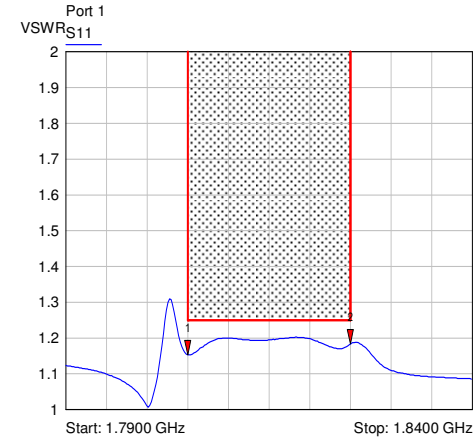
Standard:

7-16 female (50 ohms) : EN 122190, IEC 61169-4

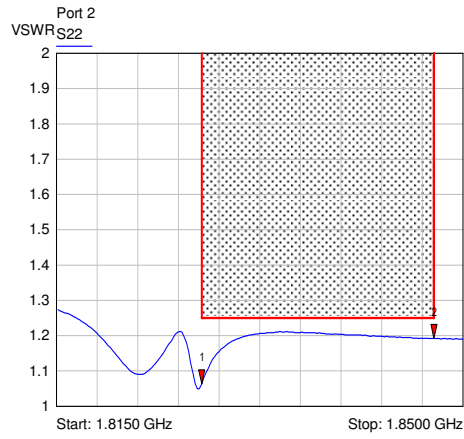
modifications reserved

Measurements:

VSWR:

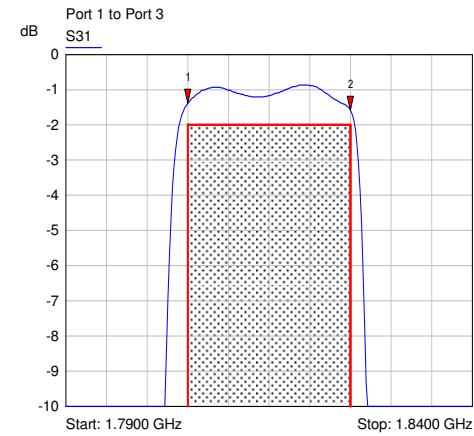


- 1 S11
▼ 1.8050 GHz
1.15 VSWR
- 2 S11
▼ 1.8250 GHz
1.18 VSWR

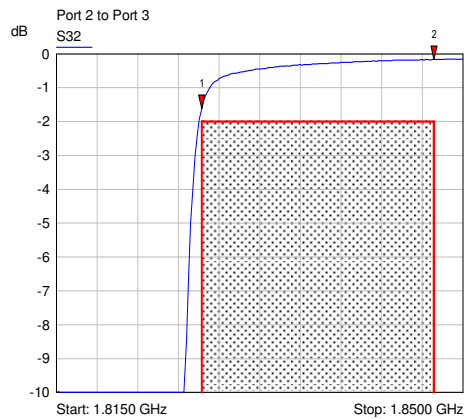


- 1 S22
▼ 1.8275 GHz
1.06 VSWR
- 2 S22
▼ 1.8475 GHz
1.19 VSWR

Insertion loss:

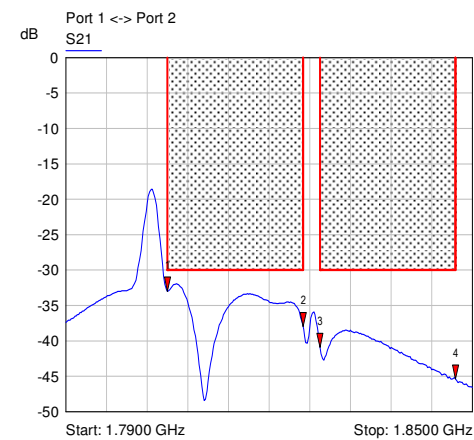


- 1 S31
▼ 1.8050 GHz
-1.39 dB
- 2 S31
▼ 1.8250 GHz
-1.58 dB



- 1 S32
▼ 1.8275 GHz
-1.61 dB
- 2 S32
▼ 1.8475 GHz
-0.17 dB

Isolation:



- 1 S21
▼ 1.8050 GHz
-33.02 dB
- 2 S21
▼ 1.8250 GHz
-38.02 dB
- 3 S21
▼ 1.8275 GHz
-40.88 dB
- 4 S21
▼ 1.8475 GHz
-45.40 dB