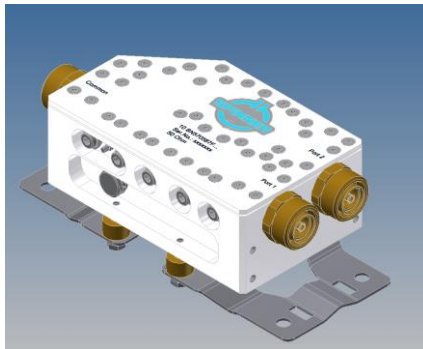
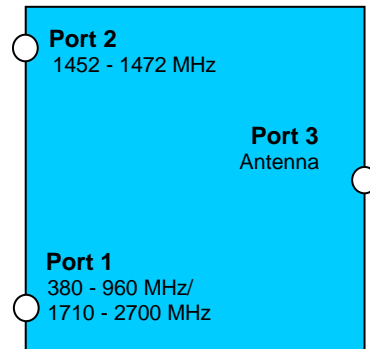


Diplexer Broadband – LTE 1.5



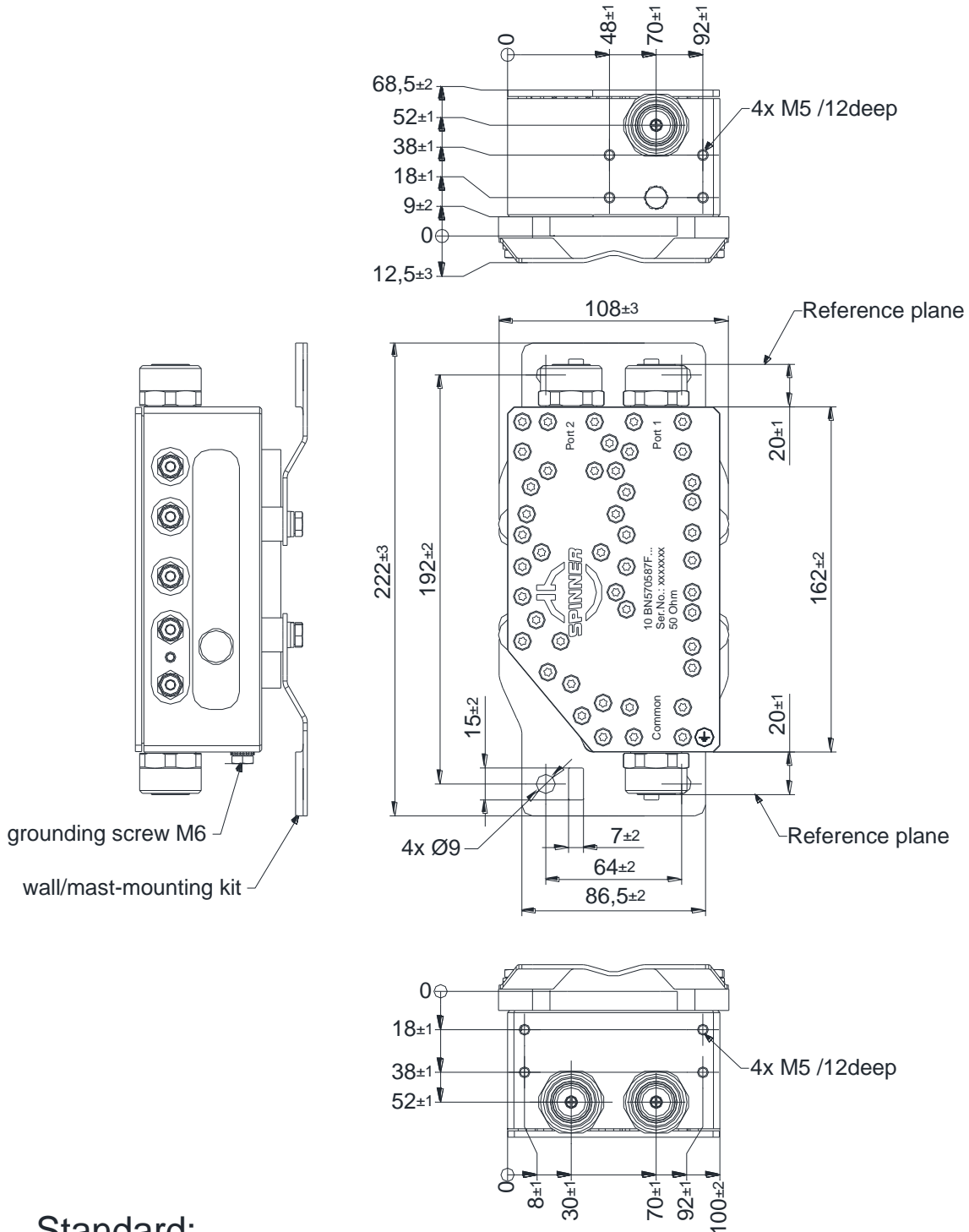
not binding



Block Diagram

Part number	BN 570587F001	
Connectors	7-16 socket (50 Ohms)	
Frequency range	Port 1	380 – 960 MHz 1710 – 2700 MHz
	Port 2	1452 – 1472 MHz
Insertion Loss	Port 1 → Port 3	≤ 0.2 dB
	Port 2 → Port 3	≤ 0.5 dB
Isolation	≥ 50 dB	
VSWR	≤ 1.25	
Power rating	Port 1	1000 W
	Port 2	100 W
IM – value 3rd order @ 2 x 20 W	≤ -155 dBc typical: ≤ -160dBc	
Degree of protection	IP 65	
Environmental conditions	ETSI EN 300019-1-1 Class 1.2 ETSI EN 300019-1-2 Class 2.3 ETSI EN 300019-1-4 Class 4.1E	
Wall / Mast mounting	part of delivery	
Weight	2.6 kg	
Temperature range	-25 °C – +80 °C	

Dimension:



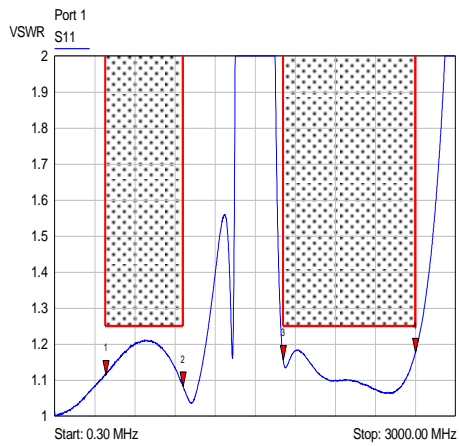
Standard:

7-16 female (50 ohms): CECC 22190, IEC 61169-4;

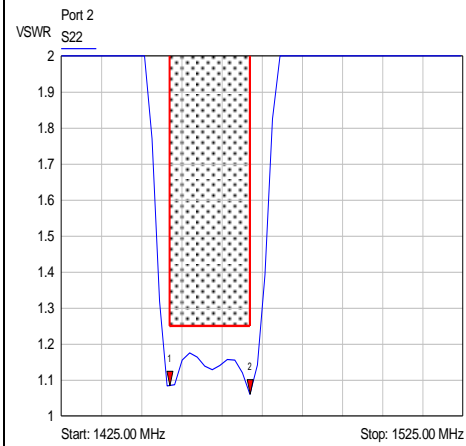
modifications reserved

Measurements:

VSWR:

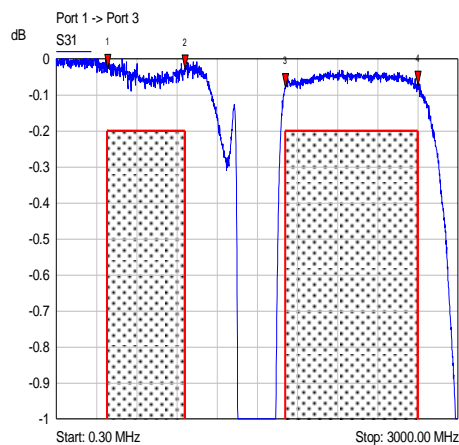


- 1 S11
▼ 380.00 MHz
1.12 VSWR
- 2 S11
▼ 960.00 MHz
1.08 VSWR
- 3 S11
▼ 1710.00 MHz
1.16 VSWR
- 4 S11
▼ 2700.00 MHz
1.18 VSWR

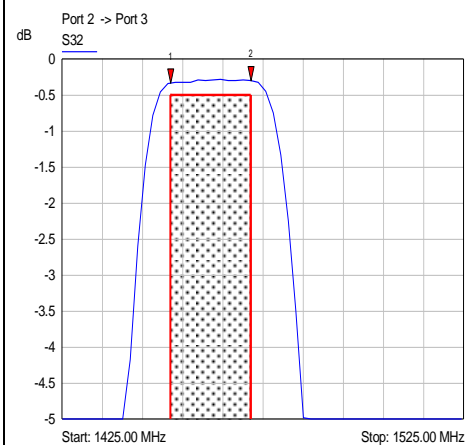


- 1 S22
▼ 1452.00 MHz
1.08 VSWR
- 2 S22
▼ 1472.00 MHz
1.06 VSWR

Insertion Loss:

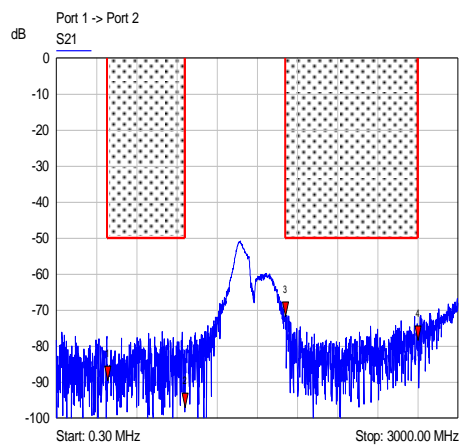


- 1 S31
▼ 380.00 MHz
-0.03 dB
- 2 S31
▼ 960.00 MHz
-0.03 dB
- 3 S31
▼ 1710.00 MHz
-0.08 dB
- 4 S31
▼ 2700.00 MHz
-0.07 dB

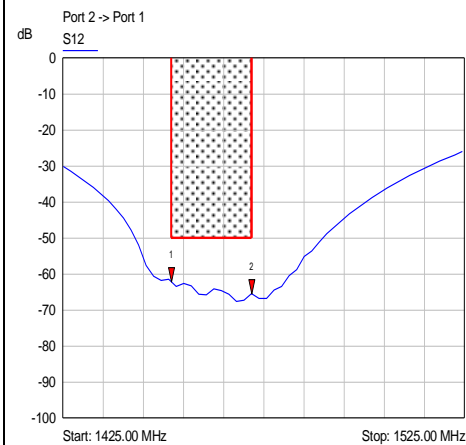


- 1 S32
▼ 1452.00 MHz
-0.34 dB
- 2 S32
▼ 1472.00 MHz
-0.30 dB

Isolation:



- 1 S21
▼ 380.00 MHz
-89.40 dB
- 2 S21
▼ 960.00 MHz
-97.09 dB
- 3 S21
▼ 1710.00 MHz
-71.69 dB
- 4 S21
▼ 2700.00 MHz
-78.31 dB



- 1 S12
▼ 1452.00 MHz
-62.16 dB
- 2 S12
▼ 1472.00 MHz
-65.56 dB