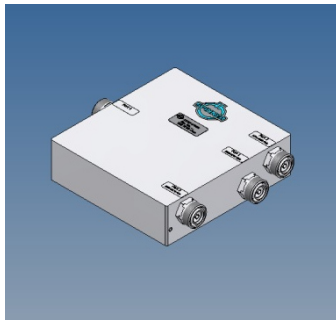
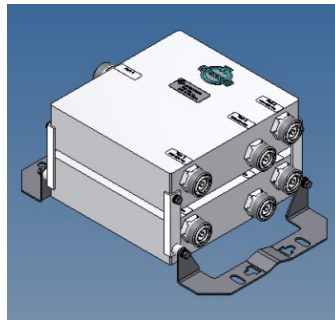


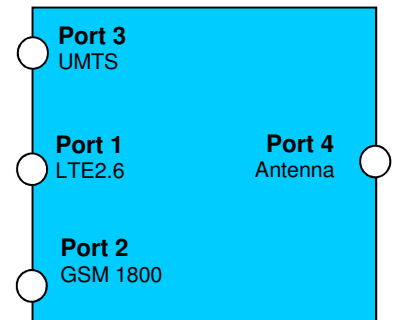
Triplexer GSM 1800 / UMTS / LTE2.6



Single Unit



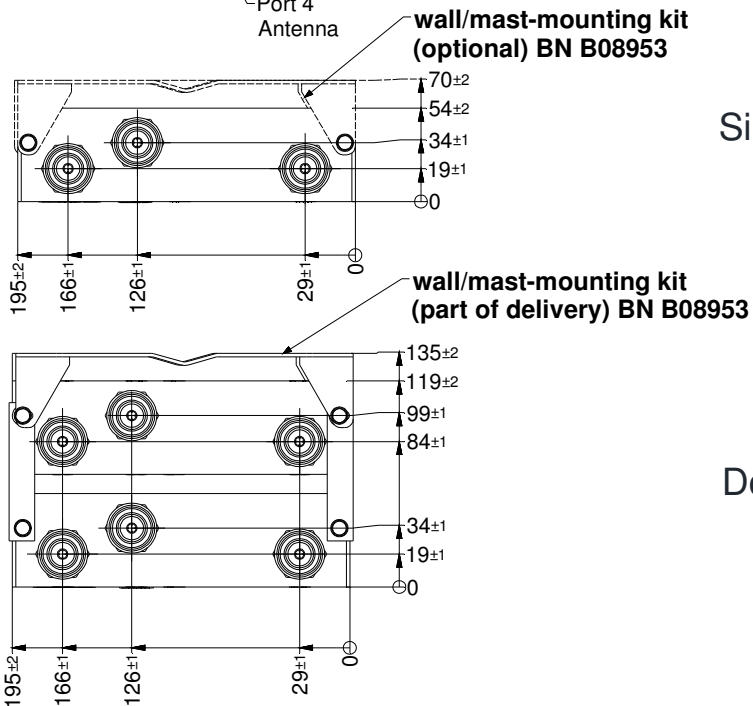
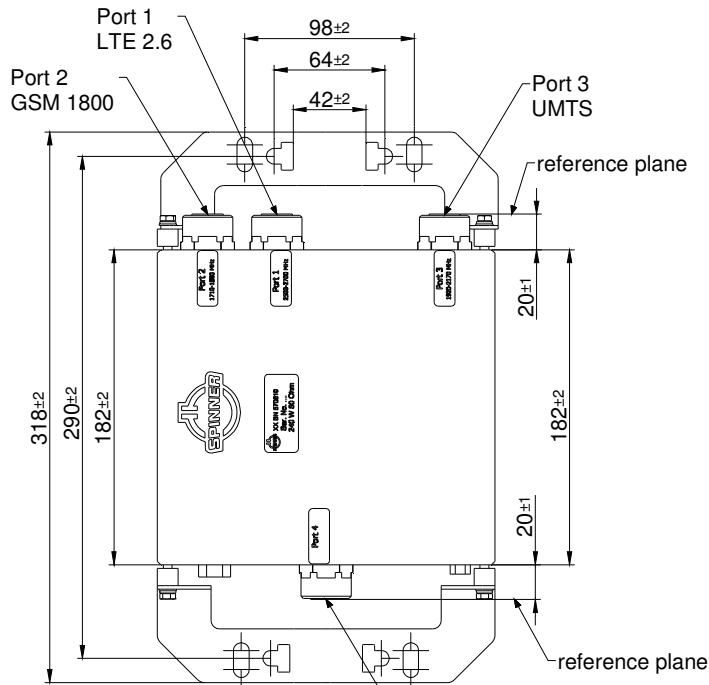
Double Unit



Block Diagram

Part number	BN570608	BN570696	BN570695	BN570610	BN570697	BN570625
Version	single			double		
Connector	7-16 socket (50 Ohms)					
Frequency range	Port 1		2500 - 2690 MHz (LTE2.6)			
	Port 2		1710 – 1880 MHz (GSM1800)			
	Port 3		1920 – 2170 MHz (UMTS)			
Insertion loss	Port 1 → Port 4		≤ 0.50 dB			
	Port 2 → Port 4		≤ 0.40 dB			
	Port 3 → Port 4		≤ 0.45 dB			
Isolation	Port 1 → Port 2, 3		≥ 50 dB			
	Port 2 → Port 1, 3					
	Port 3 → Port 1, 2					
VSWR	Port 1		≤ 1.25			
	Port 2		≤ 1.25			
	Port 3		≤ 1.25			
Power rating	≤ 240 W					
DC-by-pass	to all ports	GSM1800	UMTS	to all ports	GSM1800	UMTS
	(max. 1A per input max. 60V DC(AISG Standard, 2.0, § 6.4))					
Surge Protection	3 kA (10/350 μs)					
Intermodulation products: 3rd order @ 2 x 20 W	≤ -155 dBc (typical ≤ -160 dBc)					
Degree of protection: mated / 1bar, 1h, ≤18°C	IP 65					
Environmental conditions	ETSI EN 300019-1-1 Class 1.2 ETSI EN 300019-1-2 Class 2.3 ETSI EN 300019-1-4 Class 4.1E					
Temperature range	-25 °C – +65 °C					
Weight	3.5 kg			7.3 kg		
Wall / Mast mounting	to be ordered separately under BN B08953			part of delivery		

Dimensions:



Single Unit

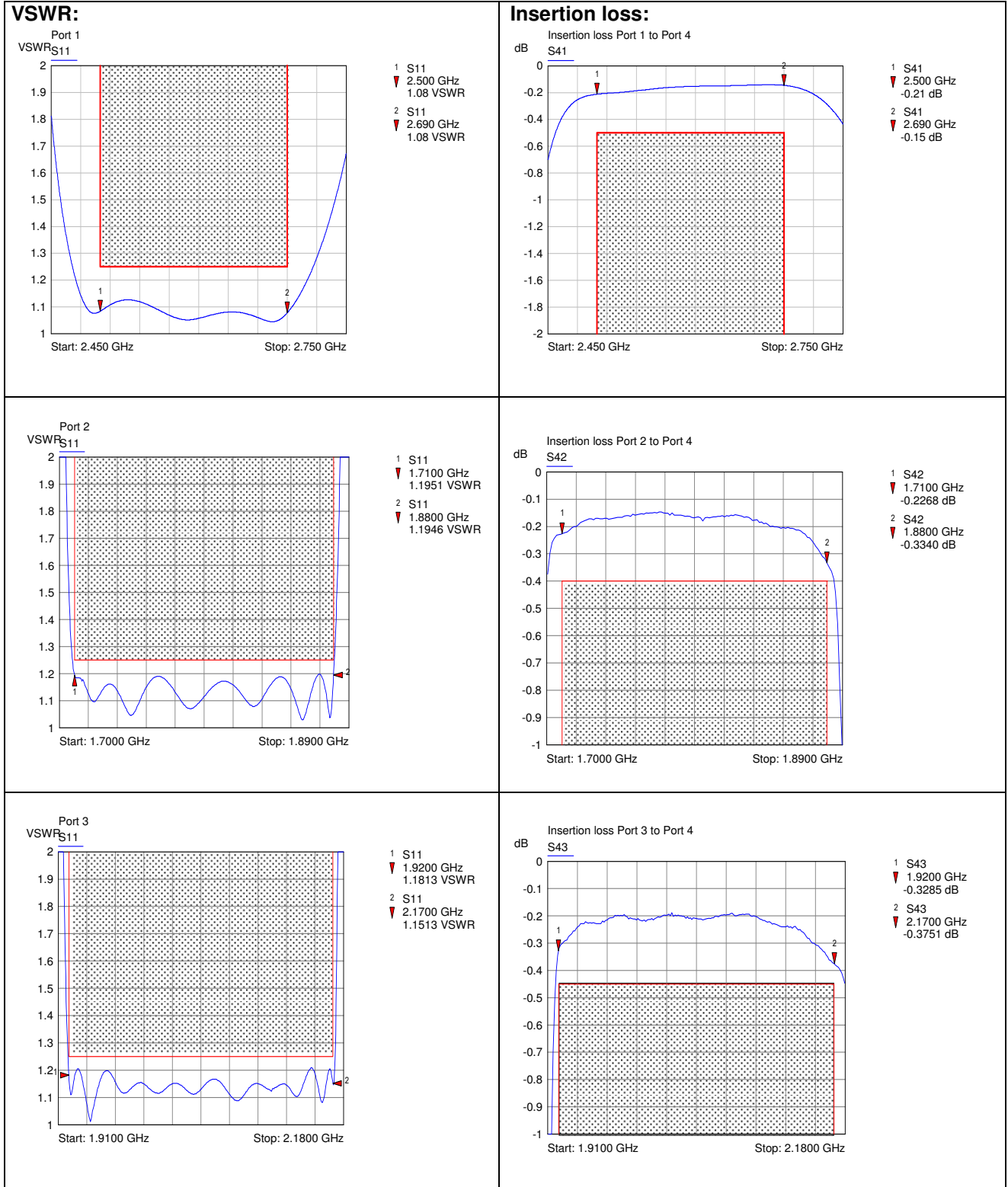
Double Unit

Standard:

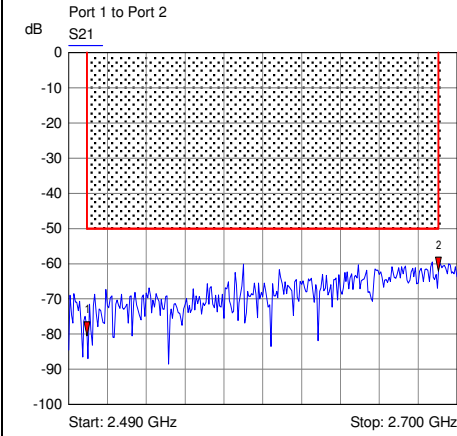
7-16 female (50 ohms): CECC 22190, IEC 61169-4

modifications reserved

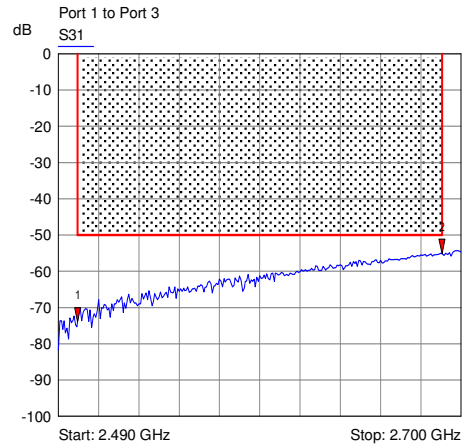
Measurements:



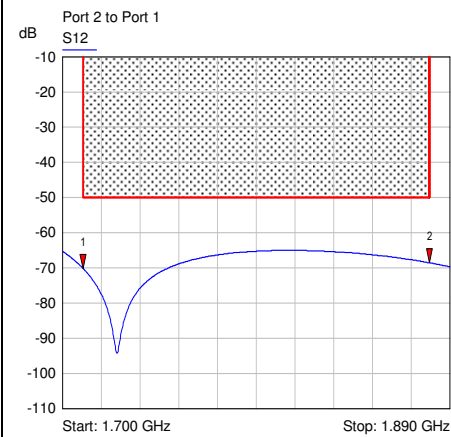
**Isolation:**



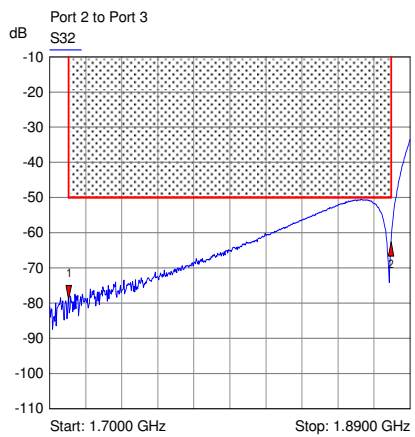
- 1 S21  
▼ 2.500 GHz  
-80.5344 dB
- 2 S21  
▼ 2.690 GHz  
-62.1630 dB



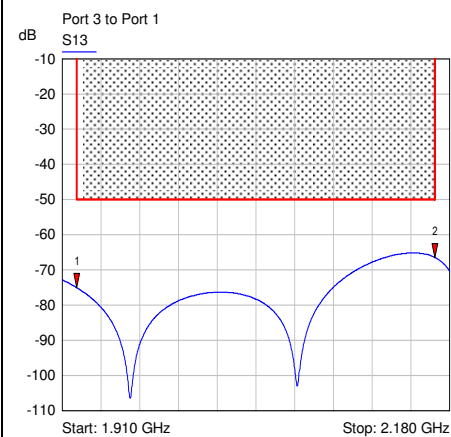
- 1 S31  
▼ 2.500 GHz  
-74.0385 dB
- 2 S31  
▼ 2.690 GHz  
-55.0531 dB



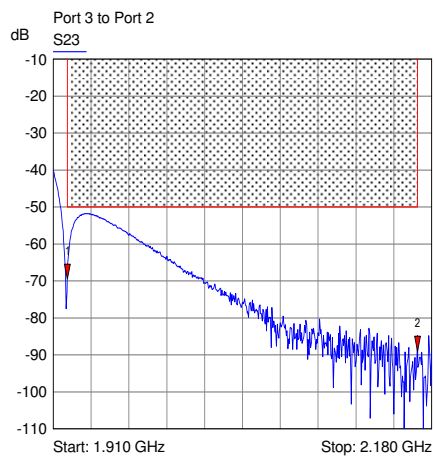
- 1 S12  
▼ 1.710 GHz  
-70.14 dB
- 2 S12  
▼ 1.880 GHz  
-68.55 dB



- 1 S32  
▼ 1.710 GHz  
-79.1057 dB
- 2 S32  
▼ 1.880 GHz  
-62.7431 dB



- 1 S13  
▼ 1.920 GHz  
-75.04 dB
- 2 S13  
▼ 2.170 GHz  
-66.50 dB



- 1 S23  
▼ 1.920 GHz  
-69.4502 dB
- 2 S23  
▼ 2.170 GHz  
-88.9448 dB