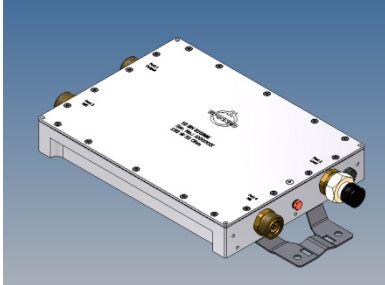
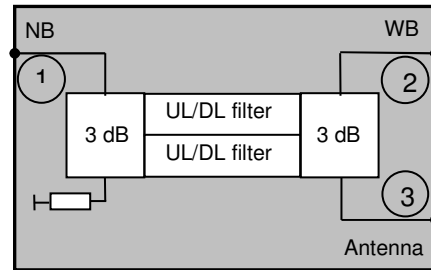


CIB Combiner UMTS



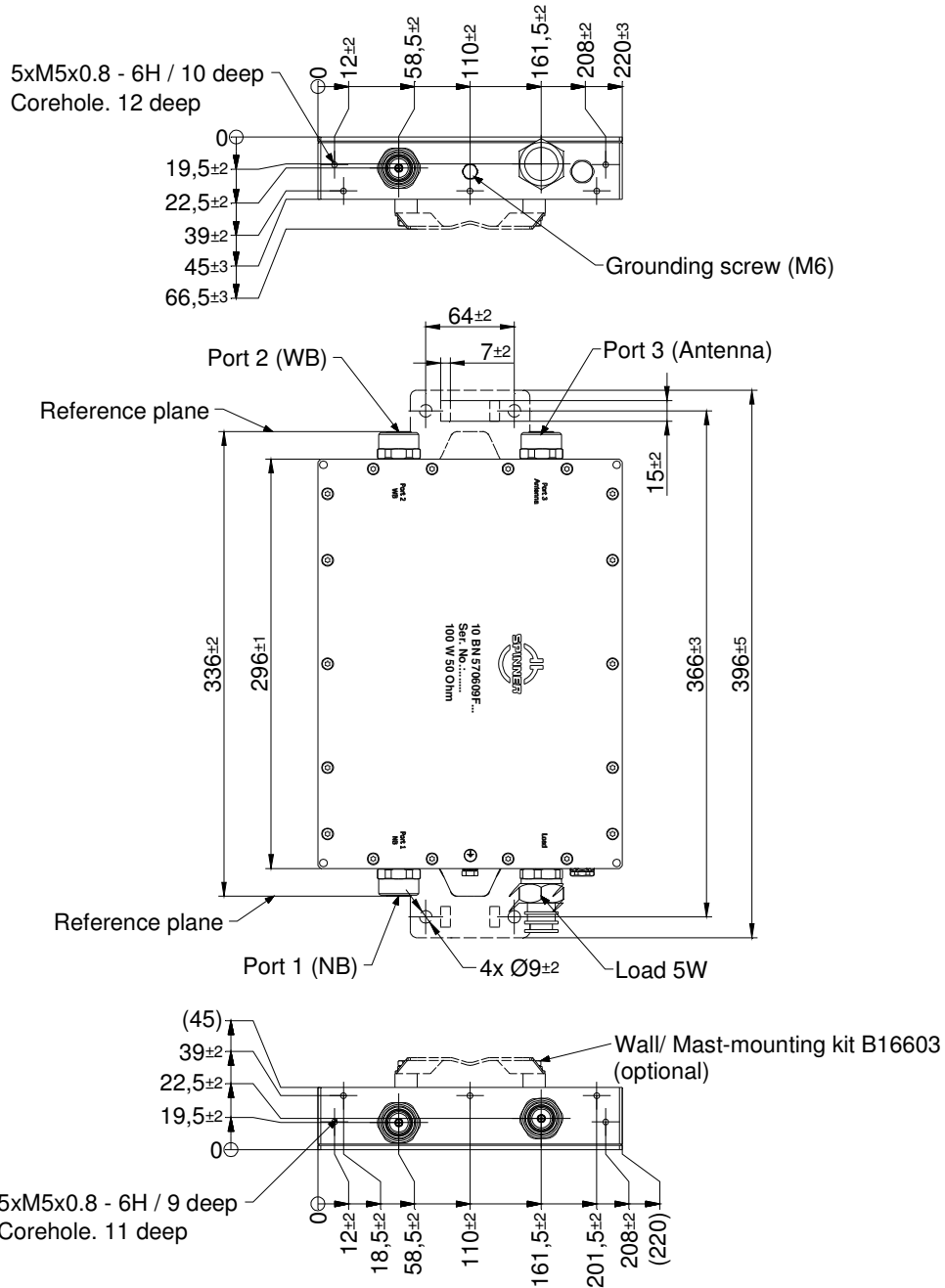
not binding



block diagram

Part number	BN 570609	
Connectors	7-16 socket (50 Ohms)	
Frequency range	port 1	1920 – 1980(RX1) / 2110 – 2170 MHz(TX1)
	port 2	1920 – 1980(RX2) / 2110 – 2170 MHz(TX2)
Bandwidth(BW)	port 1, 2	10 – 25 MHz tunable
Band gap(BG)	between TX1 and TX2	2.5 MHz min. (tuning example: Port 1: 1950.0 - 1971.5 / 2140.0 – 2161.5 MHz Port 2: 1974.0 – 1980.0 / 2164.0 – 2170.0 MHz)
Insertion loss	port 1 → port 3 port 2 → port 3	1.0 dB typ. / 1.5 dB max. @ edge of the band 1.0 dB typ. / 1.5 dB max. @ edge of the band
Isolation	port 1 → port 2(TX1 → TX2) port 2 → port 1(TX2 → TX1)	38 dB typ. / 33 dB min. 40 dB min.
VSWR	port 1 port 2	1.15 typ. / 1.2 max. 1.15 max.
Power rating	100 W (CW) per input	
IM – value 3rd order @ 2 x 20 W	≤ -155 dBc	
Degree of protection (mated)	IP 65	
Environmental conditions	ETSI EN 300019-1-1 Class 1.2 ETSI EN 300019-1-2 Class 2.3 ETSI EN 300019-1-4 Class 4.1E	
Weight	Approx. 6 kg	
Wall / Mast mounting	to be ordered separately under BN B16603	
Temperature range	-25 °C – +65 °C	

Dimensions:



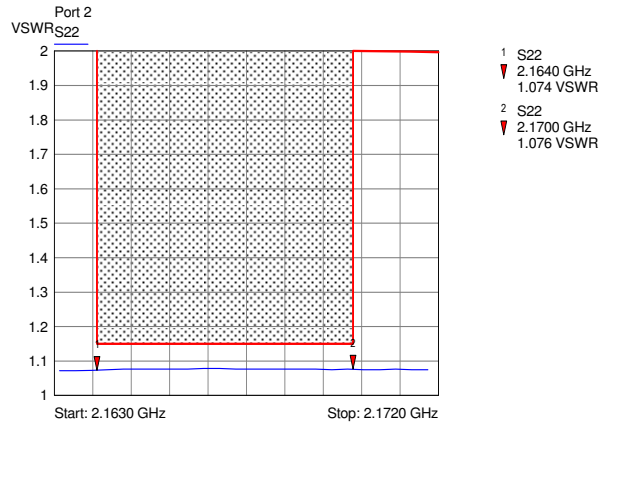
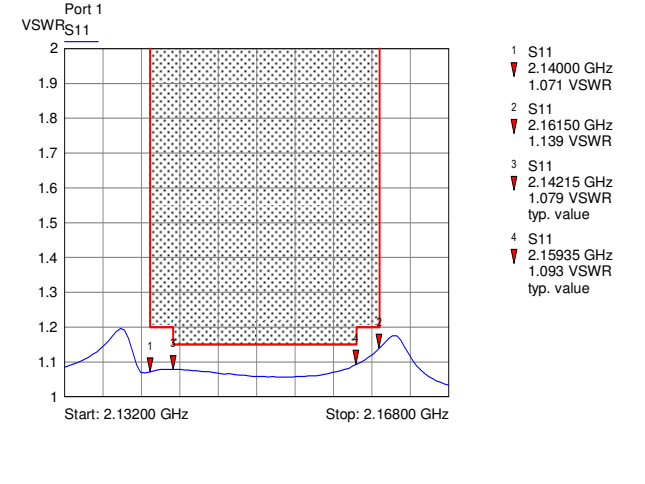
Standard:

7-16 female (50 ohms) : EN 122190, IEC 61169-4

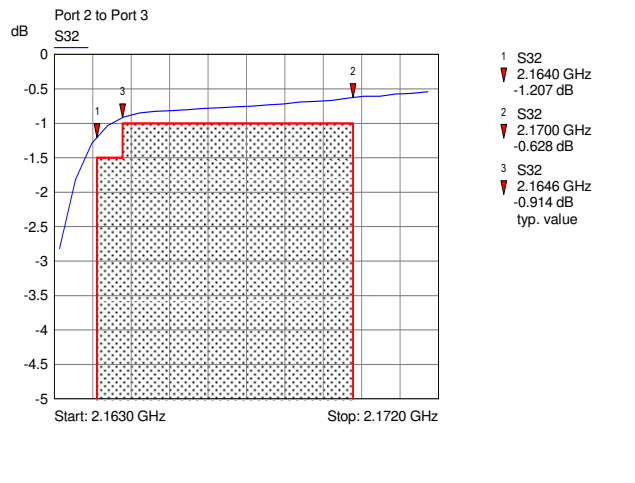
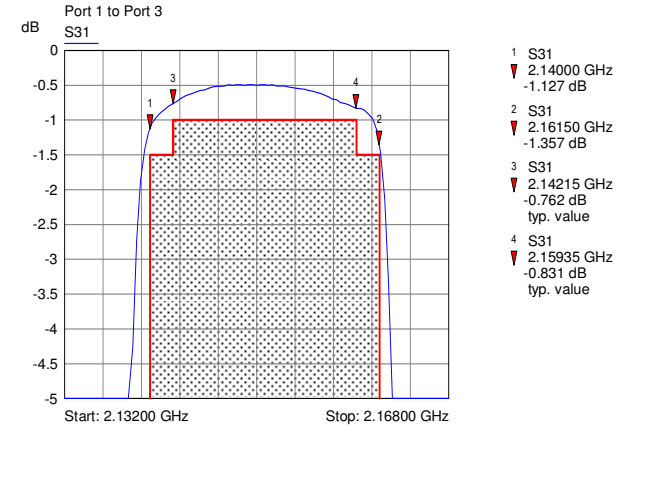
modifications reserved

Measurements:

VSWR:



Insertion loss:



Isolation:

