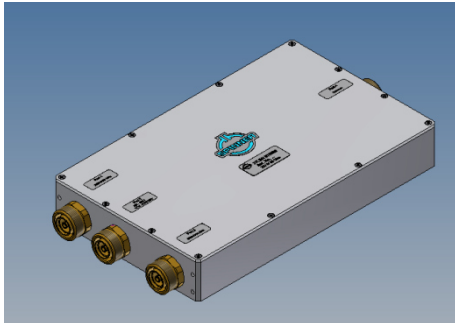
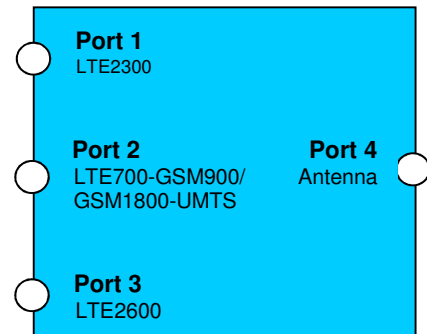


Triplexer LTE700-GSM900-GSM1800-UMTS/ LTE 2300 / LTE 2600



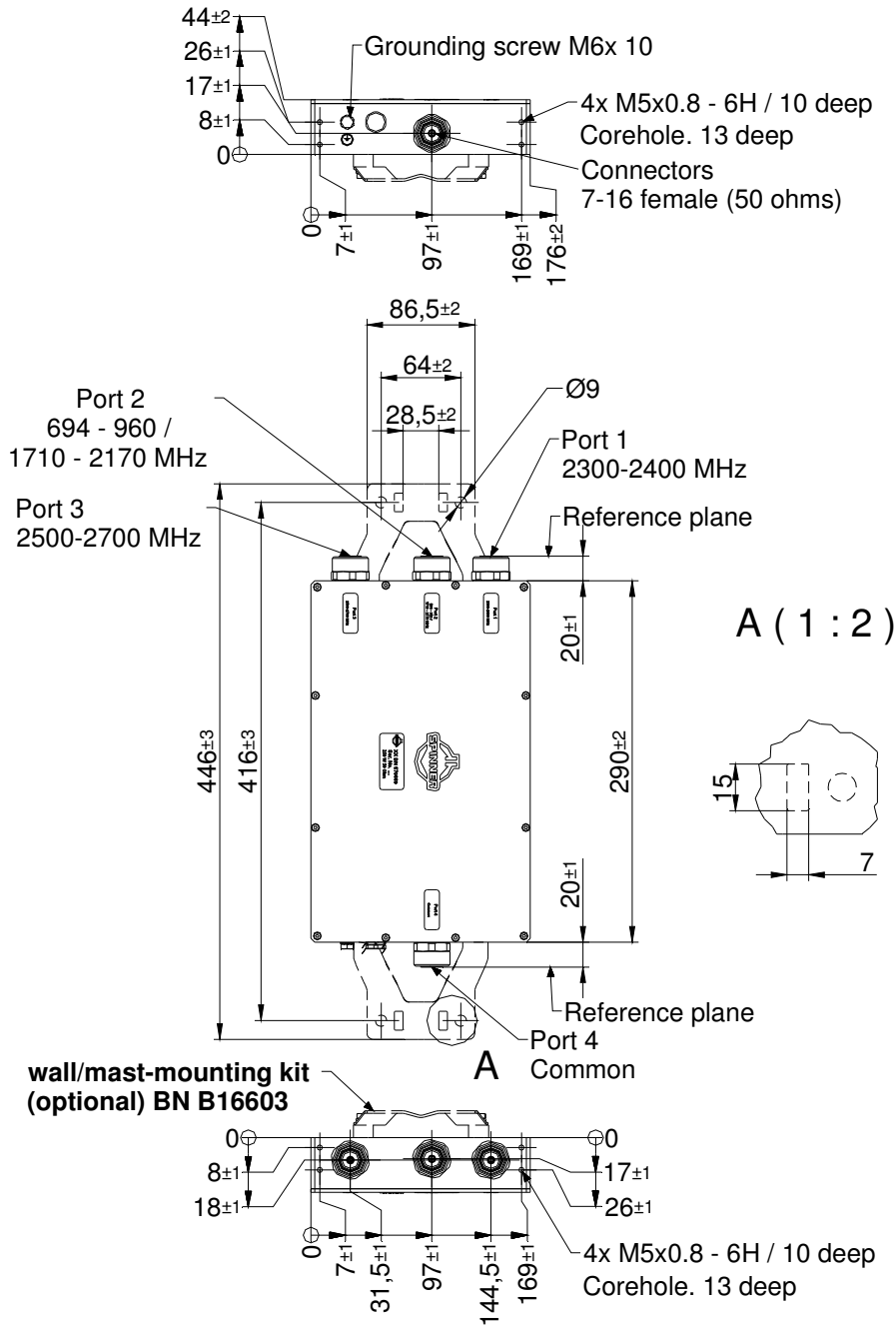
not binding



Block Diagram

Part number		BN 570669
Connectors		7-16 socket (50 Ohms)
Frequency range	Port 1	2300 - 2400 MHz (LTE 2300)
	Port 2	694 – 960 / 1710 - 2170 MHz (LTE700-GSM900 / GSM1800-UMTS)
	Port 3	2500 - 2700 MHz (LTE 2600)
Insertion loss	Port 1,3	≤ 0.8 dB (typ. 0.4 dB)
	Port 2	≤ 0.3 dB (typ. 0.15 dB)
Isolation	Port 1 → port 2	≥ 50 dB
	Port 2 → port 1	≥ 70 dB
	Port 1 ↔ port 3	≥ 50 dB (typ. 60 dB)
	Port 2 → port 3	≥ 70 dB
	Port 3 → port 2	≥ 50 dB
VSWR	Port 1 and Port 3	≤ 1.25 (typ. 1.2)
	Port 2	≤ 1.3 (typ. 1.2)
IM – value 3rd order @ 2 x 20 W		≤ -155 dBc typical: ≤ -160 dBc
Power rating	Port 1 and Port 3	200 W CW
	Port 2	450 W CW
Degree of protection		IP65 (outdoor use)
Environmental conditions		ETSI EN 300019-1-1 Class 1.2 ETSI EN 300019-1-2 Class 2.3 ETSI EN 300019-1-4 Class 4.1E
Weight		4.2 kg
Paint		RAL 7047
Wall / Mast mounting		to be ordered separately under BN B16603
Temperature range		-5 °C – +65°C

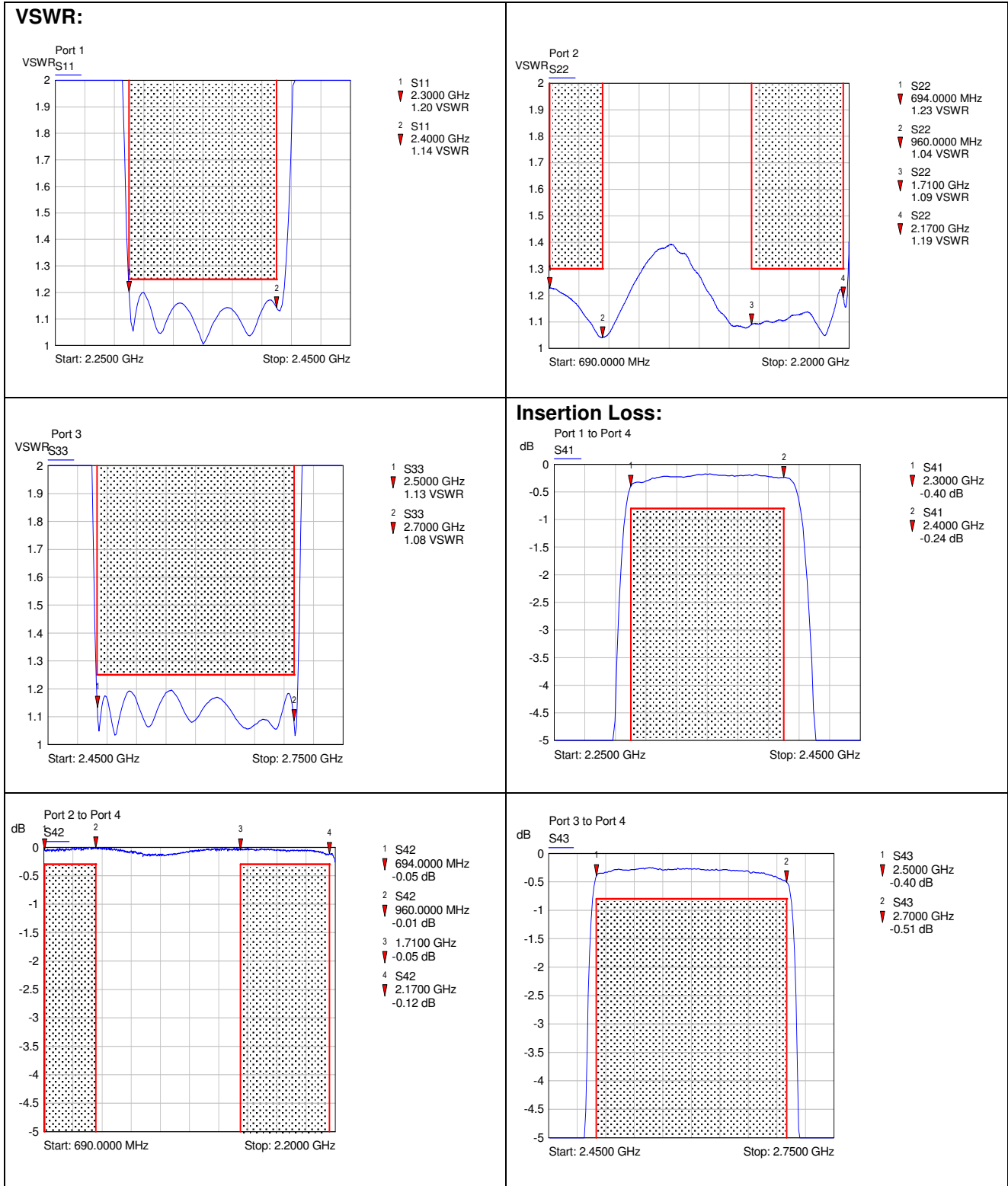
Dimensions:



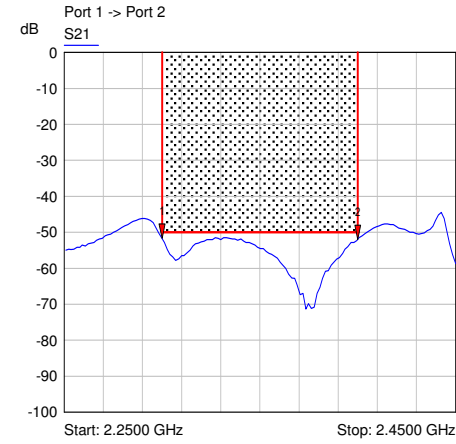
Standard:

7-16 female (50 ohms): CECC 22190, IEC 61169-4; modifications reserved

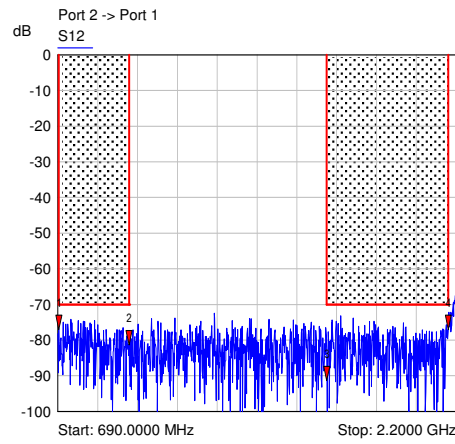
Measurements:



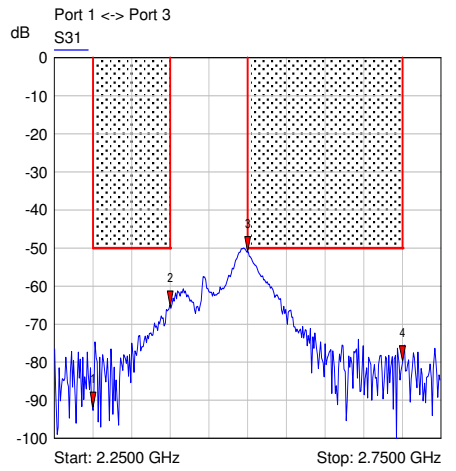
Isolation:



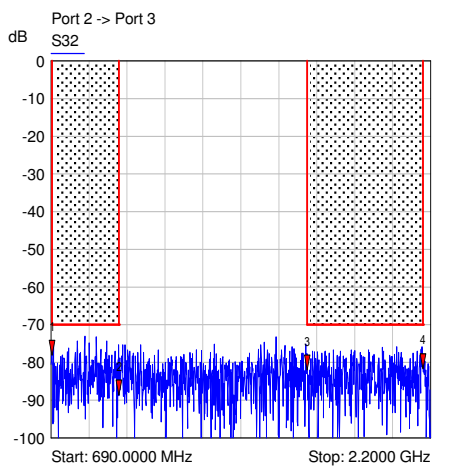
- 1 S21
▼ 2.3000 GHz
-51.73 dB
- 2 S21
▼ 2.4000 GHz
-51.95 dB



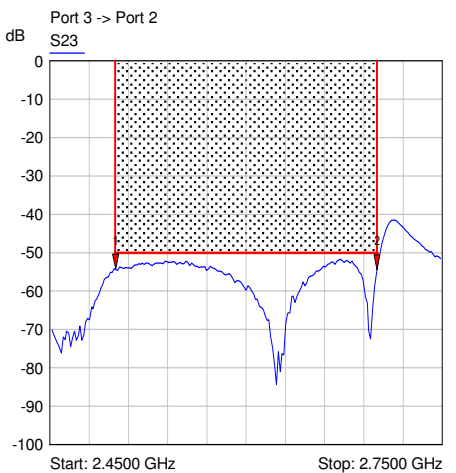
- 1 S12
▼ 694.0000 MHz
-77.02 dB
- 2 S12
▼ 960.0000 MHz
-81.26 dB
- 3 S12
▼ 1.7100 GHz
-92.63 dB
- 4 S12
▼ 2.1700 GHz
-76.88 dB



- 1 S31
▼ 2.3000 GHz
-91.78 dB
- 2 S31
▼ 2.4000 GHz
-65.29 dB
- 3 S31
▼ 2.5000 GHz
-51.04 dB
- 4 S31
▼ 2.7000 GHz
-79.68 dB



- 1 S32
▼ 694.0000 MHz
-78.07 dB
- 2 S32
▼ 960.0000 MHz
-88.75 dB
- 3 S32
▼ 1.7100 GHz
-81.91 dB
- 4 S32
▼ 2.1700 GHz
-81.64 dB



- 1 S23
▼ 2.5000 GHz
-54.37 dB
- 2 S23
▼ 2.7000 GHz
-54.41 dB