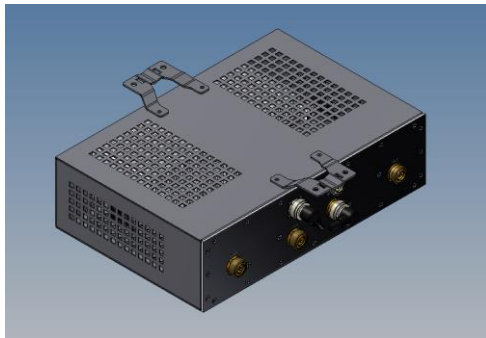


Coupler Unit



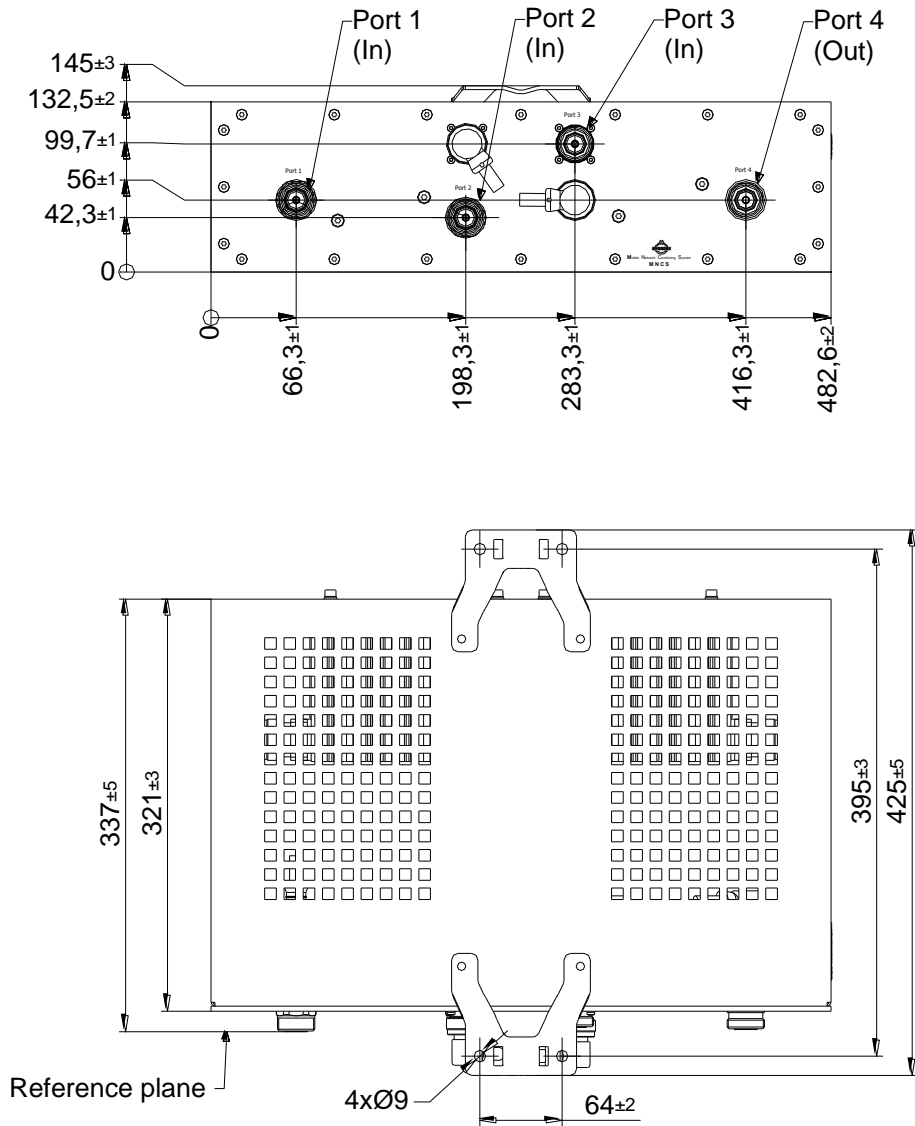
not binding



block diagram

Part number	BN 570671	
Connectors	7-16 female (50 Ohms)	
Frequency range (All Ports)	694 – 960 / 1710 – 1880 / 1920 – 2170 / 2300 – 2700 MHz	
Insertion loss	Port 1 → Port 4 Port 2 → Port 4 Port 3 → Port 4	≤ 5.5 dB (typ. 5.1 dB) ≤ 5.5 dB (typ. 5.1 dB) ≤ 5.5 dB (typ. 5.1 dB)
Isolation	Port 1 ↔ Port 2 Port 1 ↔ Port 3 694 – 960 / 1710 – 1880 / 1920 – 2170 MHz 2300 – 2700 MHz Port 2 ↔ Port 3 694 – 960 / 1710 – 1880 / 1920 – 2170 MHz 2300 – 2700 MHz	≥ 25 dB (typ. 27 dB) ≥ 30 dB (typ. 32 dB) ≥ 25 dB (typ. 27 dB) ≥ 30 dB (typ. 32 dB) ≥ 25 dB (typ. 27 dB)
VSWR	< 1.3	
Test voltage	500 V (without loads)	
Power rating	Port 1, 2, 3	100 W CW max.
IM – value 3rd order @ 2 x 20 W	≤ -155 dBc typ. -160 dBc	
DC-by-pass	Port 1 to Port 4 (max. 1A per input max. 60V DC (AISG Standard, 2.0, § 6.4))	
Degree of protection	All components IP67	
Weight	13.5 kg	
Temperature range	-5 °C– +55 °C	

Dimensions:



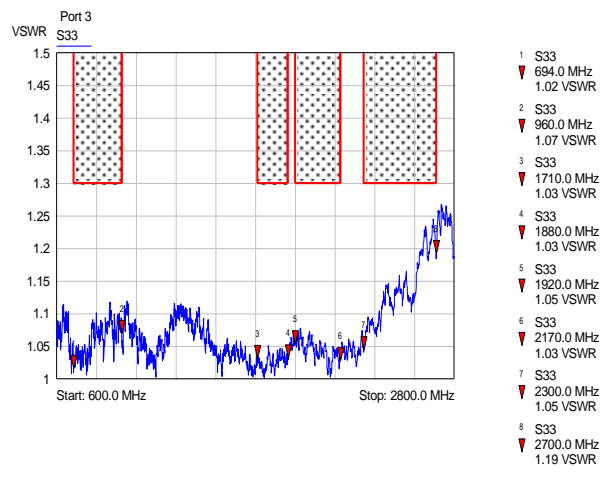
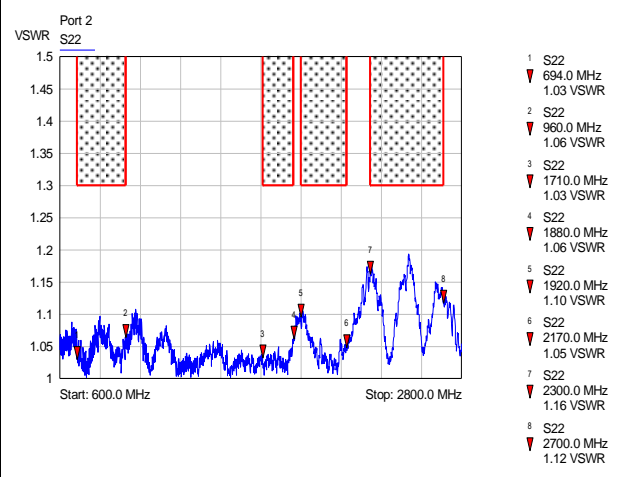
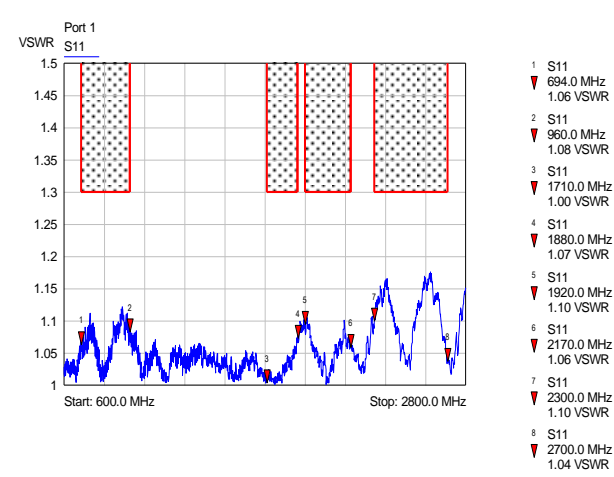
Standard:

7-16 female (50 ohms): CECC 22190, IEC 61169-4

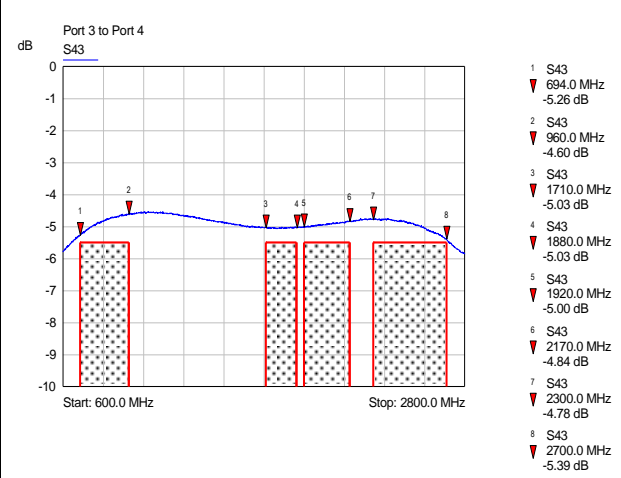
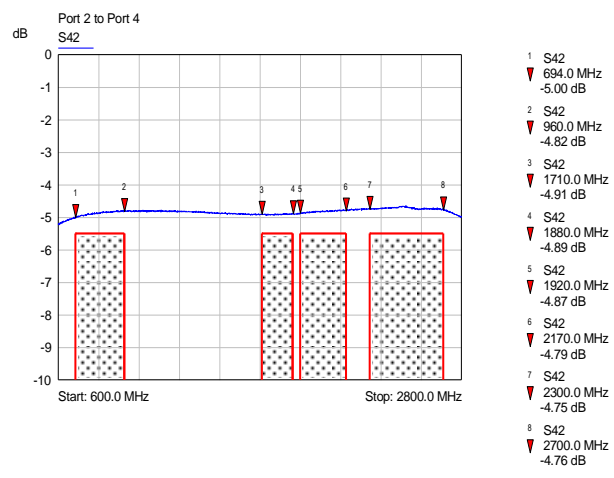
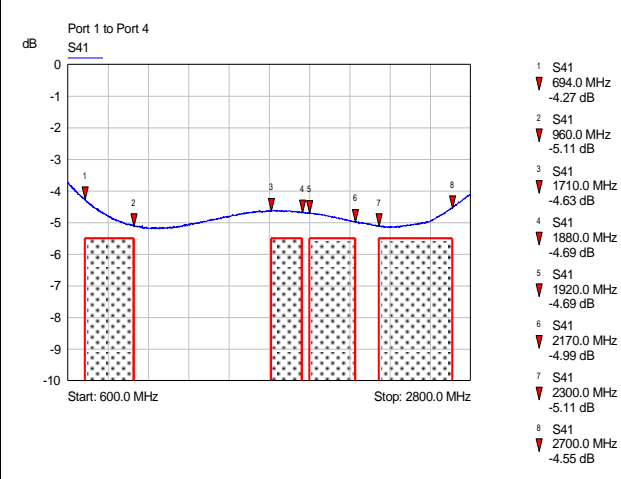
modifications reserved

Measurements:

VSWR:



Insertion loss:



Isolation:

