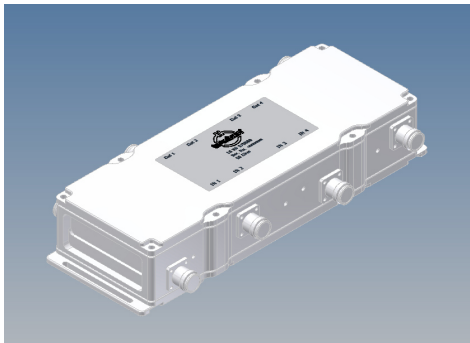
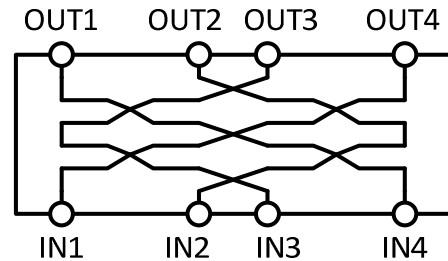


4-WAY COMBINER 350-2700 MHZ



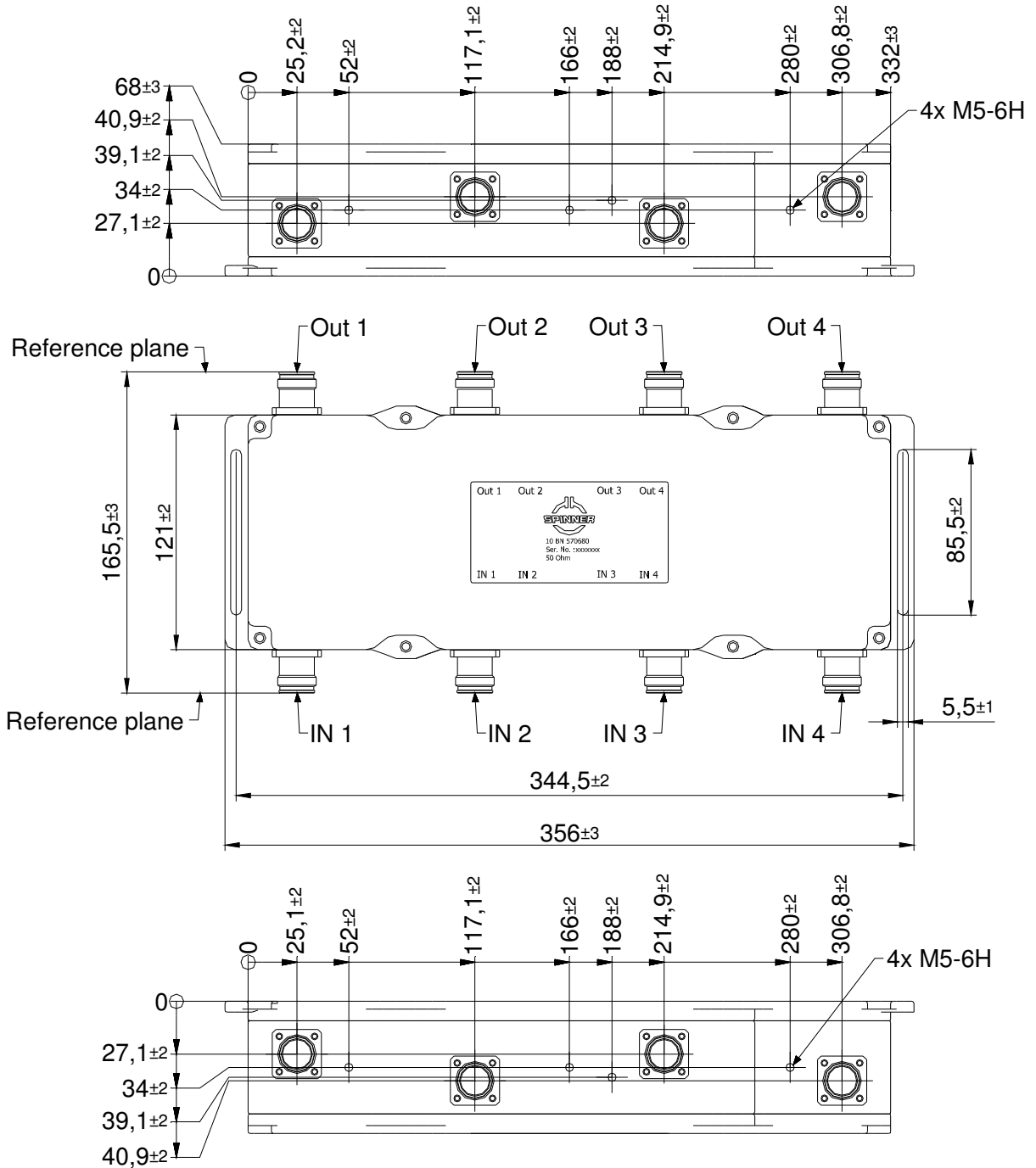
Not binding



Block diagram

|   |   |
|---|---|
| <b>Part number</b>  | <b>BN 570680</b>  |
| Connectors  | 4.3-10 female (50 Ohms)   |
| Frequency range   | 350 - 2700 MHz  |
| Insertion loss<br>(including nominal 6 dB splitting losses) | 6.0 dB ± 1.5 dB   |
| Isolation   |   |
| IN 1 <-> IN 2   | ≥ 30 dB (typ. 40 dB)  |
| IN 3 <-> IN 4   | ≥ 30 dB (typ. 40 dB)  |
| IN 2 <-> IN 3   | ≥ 25 dB (typ. 30 dB)  |
| IN 1 <-> IN 4   | ≥ 25 dB (typ. 30 dB)  |
| IN 1 <-> IN 3   | ≥ 23 dB   |
| IN 2 <-> IN 4   | ≥ 23 dB   |
| VSWR  | ≤ 1.25 (typ. 1.2)   |
| Max. input power per port                                   | 400 W   |
| IM-value 3rd order @ 2 x 20W                                | ≤ -155 dBc  |
| Test voltage  | 500 V   |
| Special feature   | DC path IN1 → OUT4, IN2 → OUT2<br>DC path IN3 → OUT3, IN4 → OUT1<br>(max. 6.5 A AISG 2.0 conform) |
| Degree of protection  | IP 65 outdoor   |
| Class. of environmental conditions                          | ETSI EN 300019-1-1 Class 1.2<br>ETSI EN 300019-1-2 Class 2.3<br>ETSI EN 300019-1-4 Class 4.1E     |
| Wall / Mast mounting  | included  |
| Weight  | 3.6 Kg  |
| Operating temperature                                       | -25°C - +65°C   |

**Dimensions:**



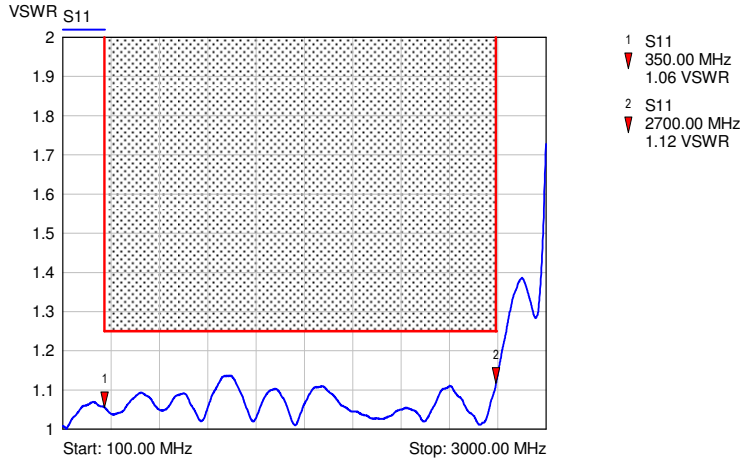
**Standard:**

4.3-10 female (50 ohms): IEC 61169-54;

modifications reserved

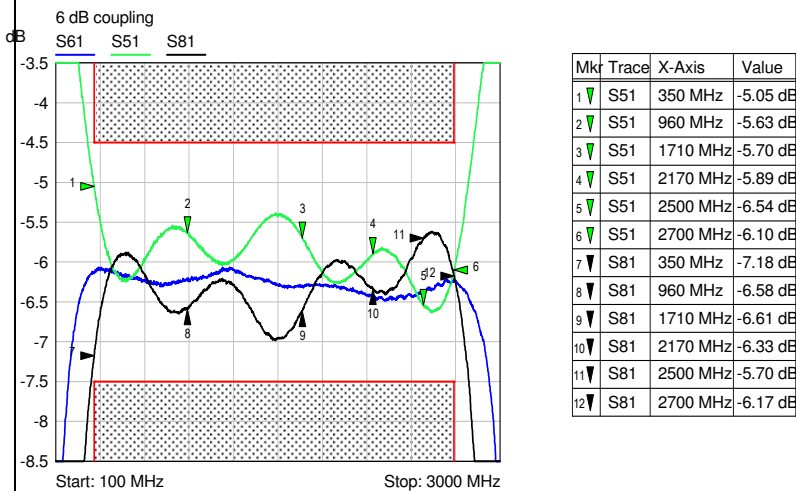
**Measurement:**

**VSWR:**



— typical for: IN1, IN2, IN3, IN4

**Insertion loss:**

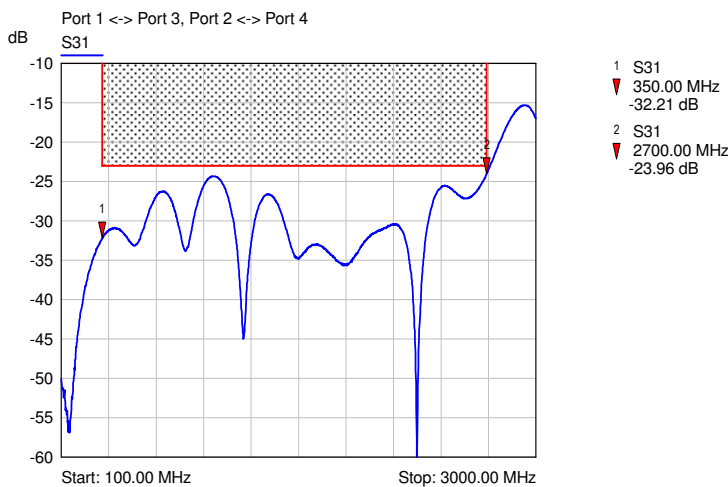


— typical for: IN1->OUT4, IN2->OUT2, IN3->OUT3, IN4->OUT1,

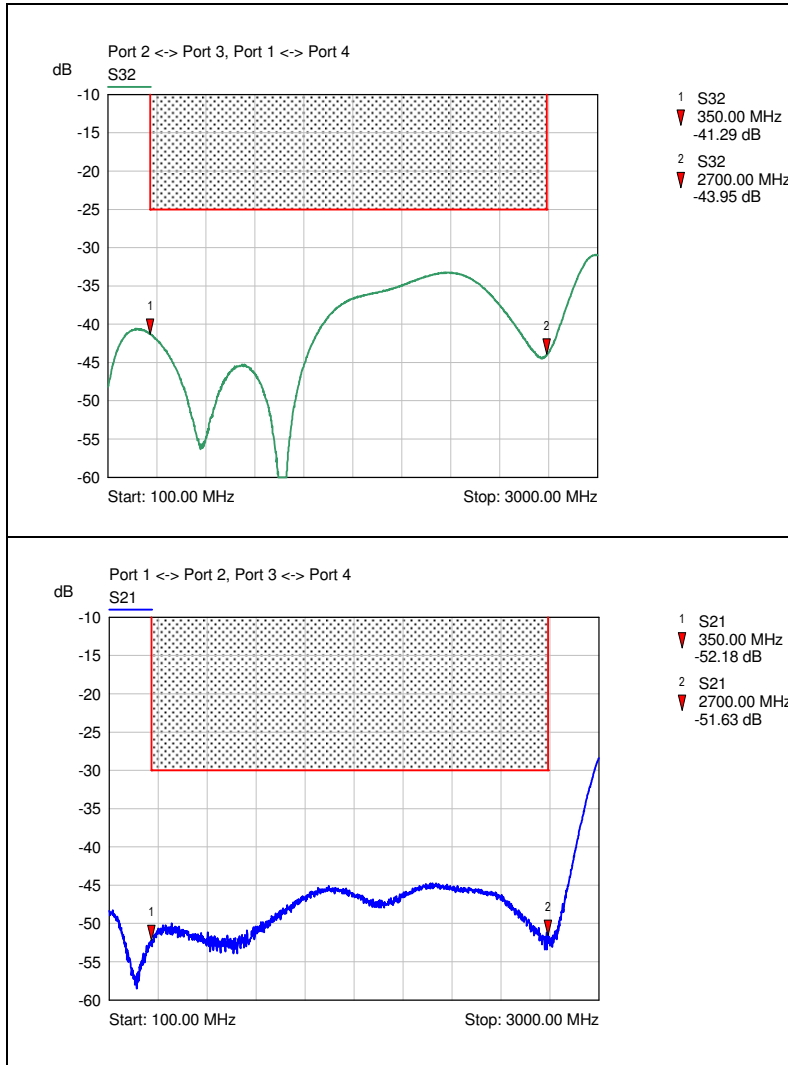
— typical for: IN1->OUT1, IN2->OUT3, IN3->OUT2, IN4->OUT4,

— typical for: IN1->OUT2, IN1->OUT3, IN2->OUT1, IN2->OUT4, IN3->OUT1, IN3->OUT4, IN4->OUT2, IN4->OUT3,

**Isolation:**



— typical for: IN1<->IN3, IN2<->IN4



— typical for: IN2<->IN3, IN1<->IN4

— typical for: IN1<->IN2, IN3<->IN4