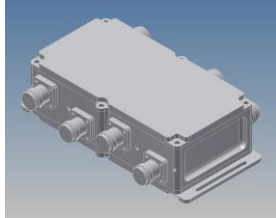
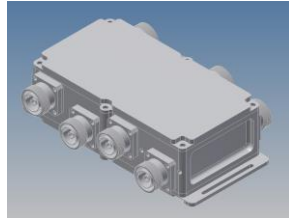


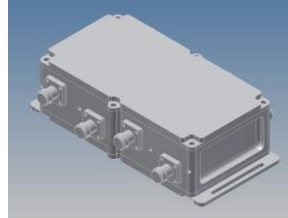
4-WAY COMBINER 694-3800MHz



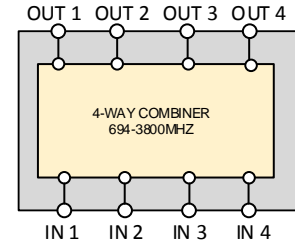
BN570681



BN570682



BN570683

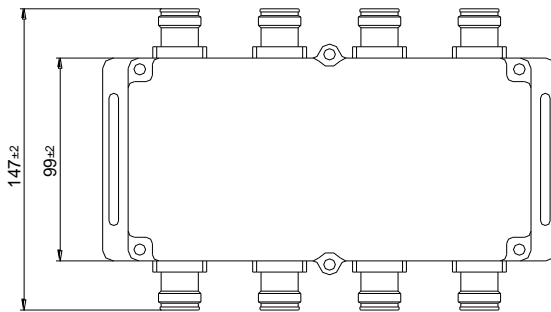
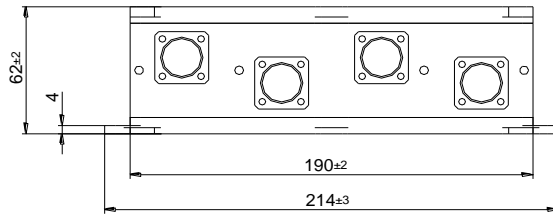


Block Diagram

Part number	BN 570681	BN 570682	BN 570683
Connectors	4.3-10 female (50 Ohms)	7-16 female (50 Ohms)	N-female (50 Ohms)
Port 1 - 4	Inputs	Inputs	Inputs
Port 5 - 8	outputs	outputs	outputs
Frequency range	694 - 3800 MHz		
Insertion loss (including nominal 6 dB splitting losses) 694 - 3800 MHz	≤ 6.1 ± 1.4dB		
Isolation	≥ 23dB		
VSWR	≤ 1.3		
Max. input power per port	400 W	500 W	200 W
IM-value 3rd order @ 2 x 20W	≤ -155 dBc		
DC-by-pass	DC path IN1 → OUT4, IN2 → OUT2 DC path IN3 → OUT3, IN4 → OUT1 (max. 6.5 A AISG 2.0 conform)		
Degree of protection	IP65		
Environmental conditions:	ETSI EN 300019-1-1 Class 1.2 ETSI EN 300019-1-2 Class 2.3 ETSI EN 300019-1-4 Class 4.1 E		
Weight	2.1 kg	2.4 kg	1.9 kg
Paint color	Gray		
Wall mounting	included		
Operating temperature	-40°C - +65°C		
Dimension (L x W x H)	See drawing		

Dimensions:

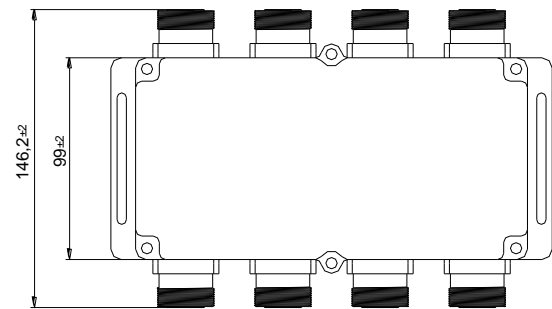
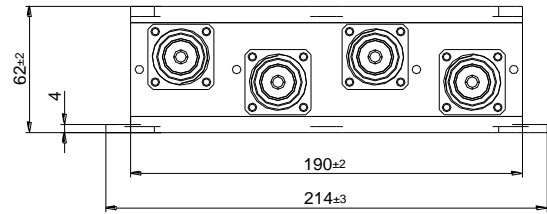
BN 570681



Standard:

4.3-10 female (50 ohms): IEC 61169-54; modifications reserved!

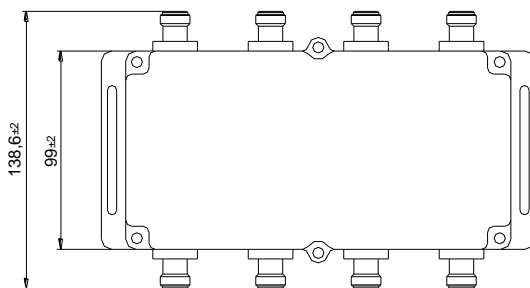
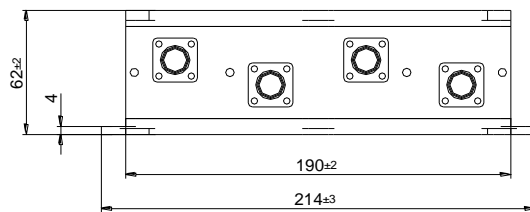
BN 570682



Standard:

7-16 female (50 ohms): EN 122190, IEC 61169-4; modifications reserved!

BN 570683

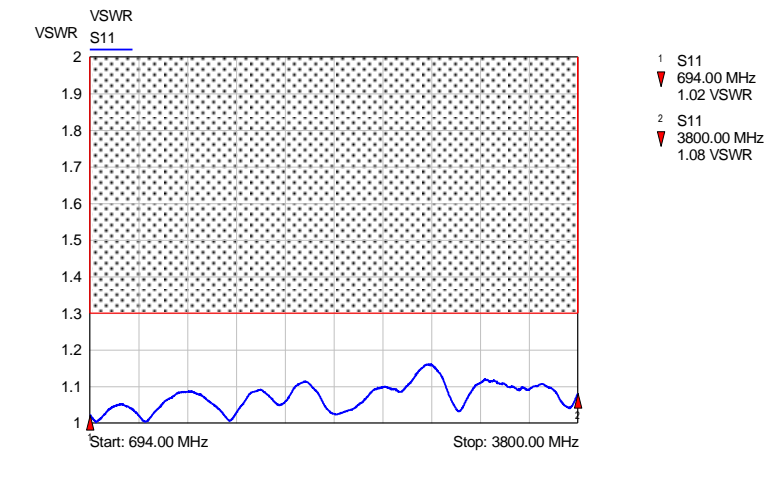


Standard:

N female (50 ohms): CECC 22210, IEC 61169-16; modifications reserved!

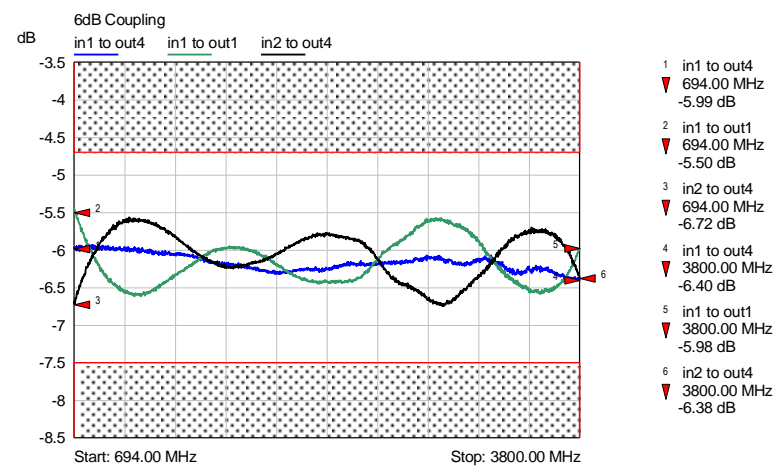
Measurement:

VSWR:



— typical for: in1 ... in4

Insertion Loss:

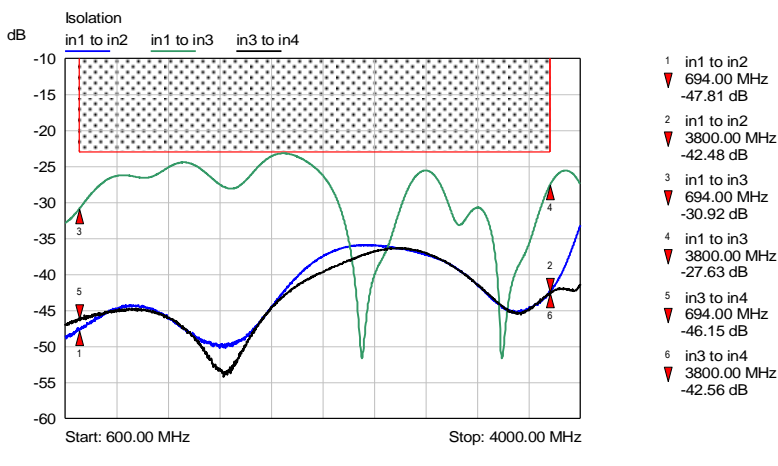


— typical for: in1 ↔ out4, in3 ↔ out3, in2 ↔ out2, in4 ↔ out1

— typical for: in4 ↔ out4, in2 ↔ out3, in3 ↔ out2, in1 ↔ out1

— typical for: in2 ↔ out4, in1 ↔ out3, in4 ↔ out3, in1 ↔ out2, in4 ↔ out2, in2 ↔ out1, in3 ↔ out1

Isolation:



— typical for: in1 ↔ in3, in2 ↔ in4

— typical for: in1 ↔ in2, in3 ↔ in4

— typical for: in2 ↔ in3, in4 ↔ in1