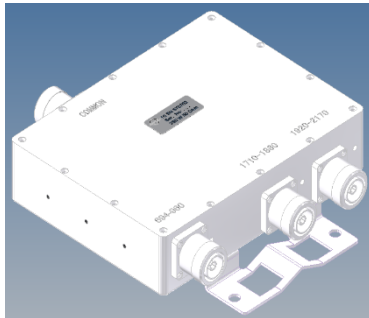
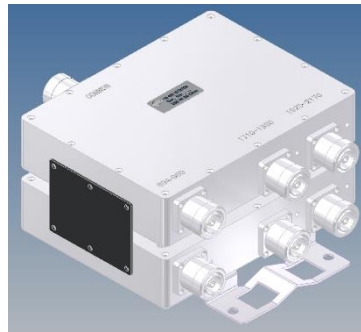


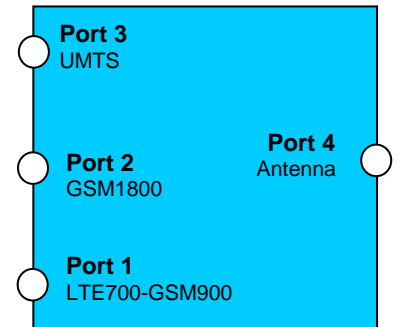
## Triplexer LTE700-GSM900 / GSM1800 / UMTS



Single Unit



Double Unit



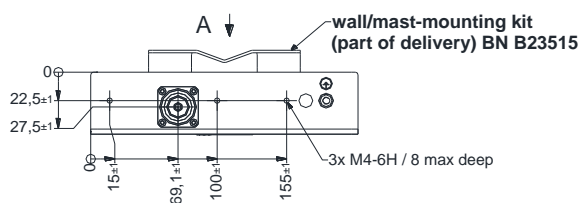
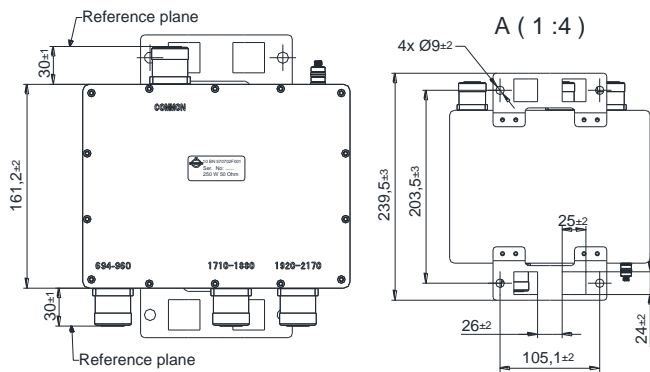
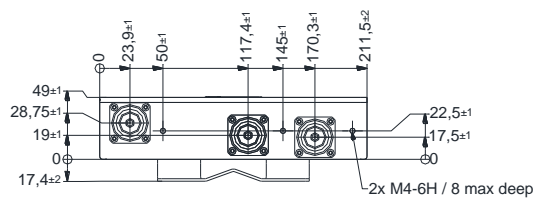
Block Diagram

Part number		BN 570702F001	BN570704F001	BN 570703F001	BN 570705F001
Version		single	double	single	double
Frequency range	Port 1	694 - 960 MHz ( LTE700-GSM900) 1710 – 1880 MHz ( GSM1800) 1920 – 2170 MHz (UMTS)			
	Port 2				
	Port 3				
Insertion loss	Port 1 → Port 4	≤ 0.20 dB ≤ 0.35 dB ≤ 0.45 dB			
	Port 2 → Port 4				
	Port 3 → Port 4				
Isolation	Port 1 → Port 2, 3	≥ 50 dB			
	Port 2 → Port 1, 3				
	Port 3 → Port 1, 2				
VSWR		≤ 1.22			
Power rating		≤ 250 W			
IM- value		≤ -160 dBc			
3rd order @ 2 x 20 W					
DC-by-pass		to all ports (max. 1A per input max. 60V DC(AISG Standard, 2.0, § 6.4))		Port 3 → Port 4 (max. 1A per input max. 60V DC(AISG Standard, 2.0, § 6.4))	
Surge Protection		3 kA (10/350 µs)			
Degree of protection		IP 65			
Environmental conditions		ETSI EN 300019-1-1 Class 1.2			
		ETSI EN 300019-1-2 Class 2.3			
		ETSI EN 300019-1-4 Class 4.1E			
Weight		3.3 kg	6.6 kg	3.3 kg	6.6 kg
Wall / Mast mounting		Part of delivery			
Temperature range		-40 °C – +60 °C			

Dimensions:

570702F001 / 570703F001

Single unit



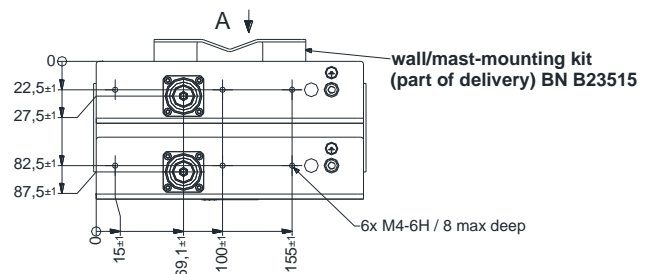
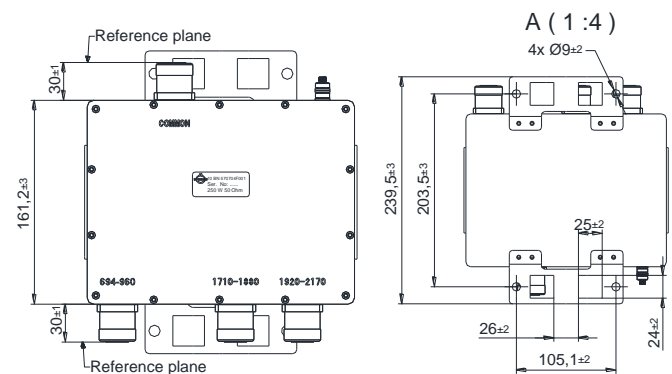
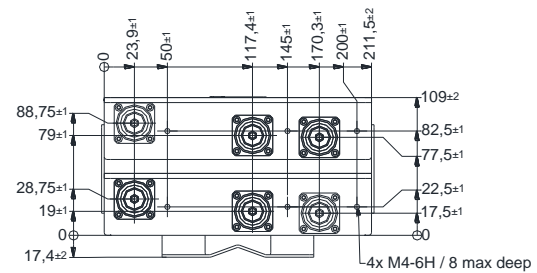
Standard:

7-16 female (50 ohms): CECC 22190, IEC 61169-4

modifications reserved

570704F001 / 570705F001

Double unit



Standard:

7-16 female (50 ohms): CECC 22190, IEC 61169-4

modifications reserved

## Measurement:

