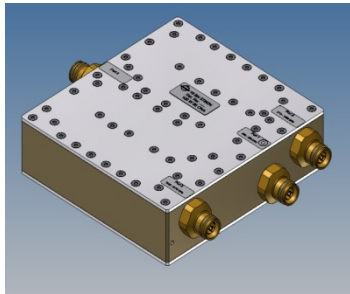
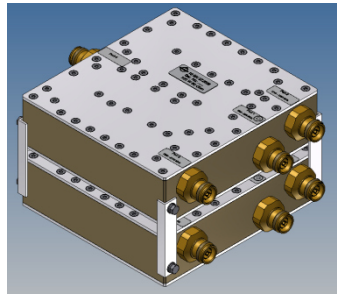


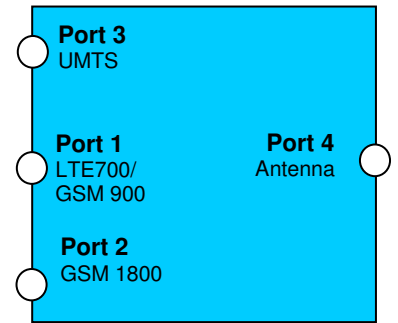
Triplexer LTE700-GSM 900 / GSM 1800 / UMTS



Single Unit



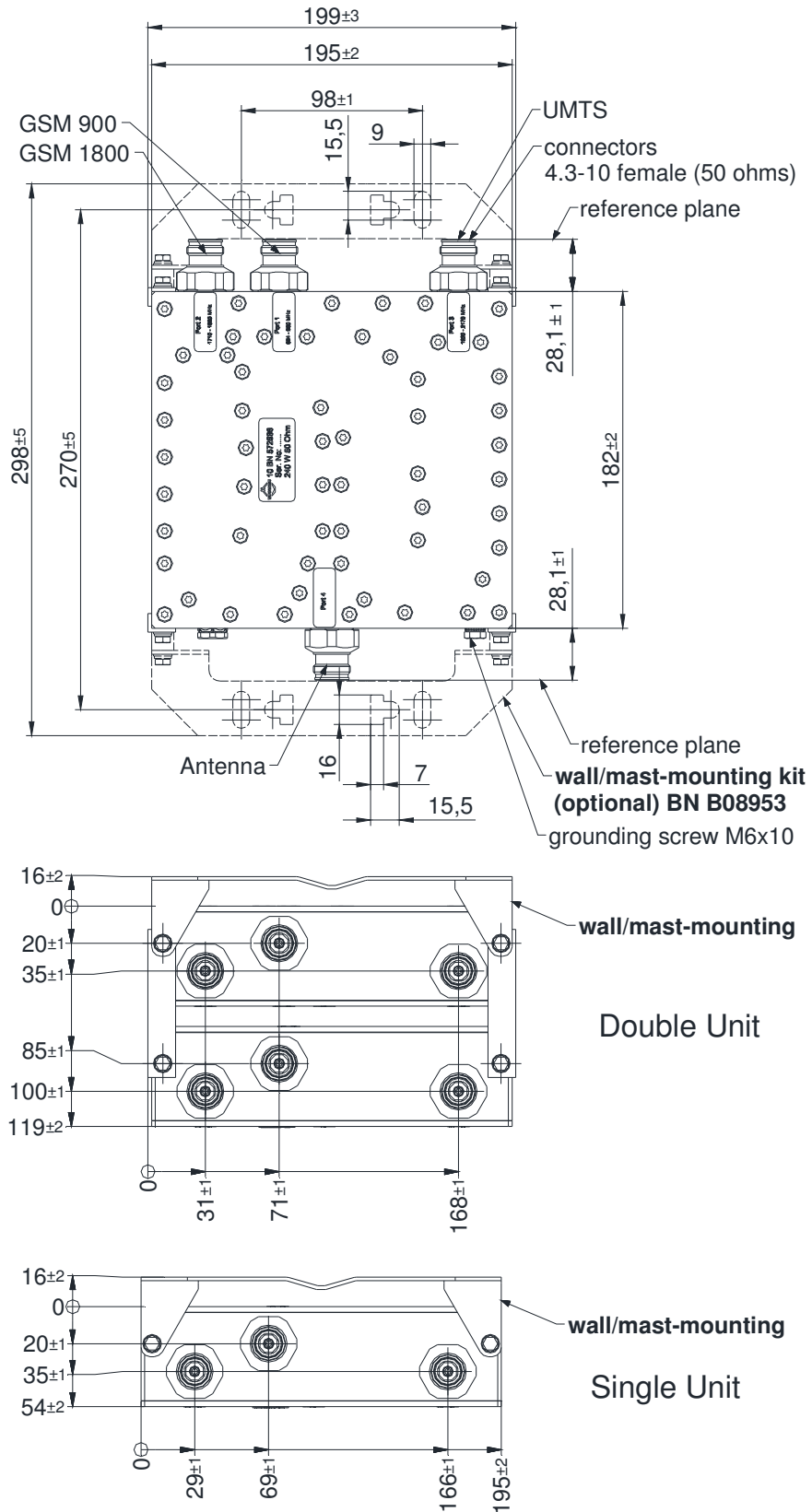
Double Unit



Block Diagram

Part number	BN 572634	BN572636	BN572635	BN 572637
Version	single	double	single	double
Frequency range	4.3-10 female (50 Ohms)			
Port 1	694 – 960 MHz (LTE700/GSM900)			
Port 2	1710 – 1880 MHz (GSM1800)			
Port 3	1920 – 2170 MHz (UMTS)			
Insertion loss	Port 1 → Port 4		≤ 0.20 dB	
	Port 2 → Port 4		≤ 0.35 dB	
	Port 3 → Port 4		≤ 0.45 dB	
Isolation	Port 1 → Port 2, 3		≥ 50 dB	
	Port 2 → Port 1, 3			
	Port 3 → Port 1, 2			
VSWR	Port 1		≤ 1.22	
	Port 2		≤ 1.22	
	Port 3		≤ 1.22	
Power rating	≤ 240 W			
Special feature	DC-by-pass (to all ports, max. 3 A)		DC-by-pass (Port 3 → Port 4, max. 3 A, Insertion loss < 1 dB from 0 MHz to 11 MHz)	
Surge Protection	3 kA (10/350 μs)			
Intermodulation products: 3rd order @ 2 x 20 W	≤ -160 dBc			
Degree of protection: mated / 1bar, 1h, ≤18°C	IP 65			
Environmental conditions:	ETSI EN 300019-1-1 Class 1.2 ETSI EN 300019-1-2 Class 2.3 ETSI EN 300019-1-4 Class 4.1E			
Temperature range:	-40 °C – +60 °C			
Weight:	3.5 kg	7.1 kg	3.5 kg	7.1 kg
Wall / Mast mounting:	to be ordered separately under BN B08953			

Dimensions:

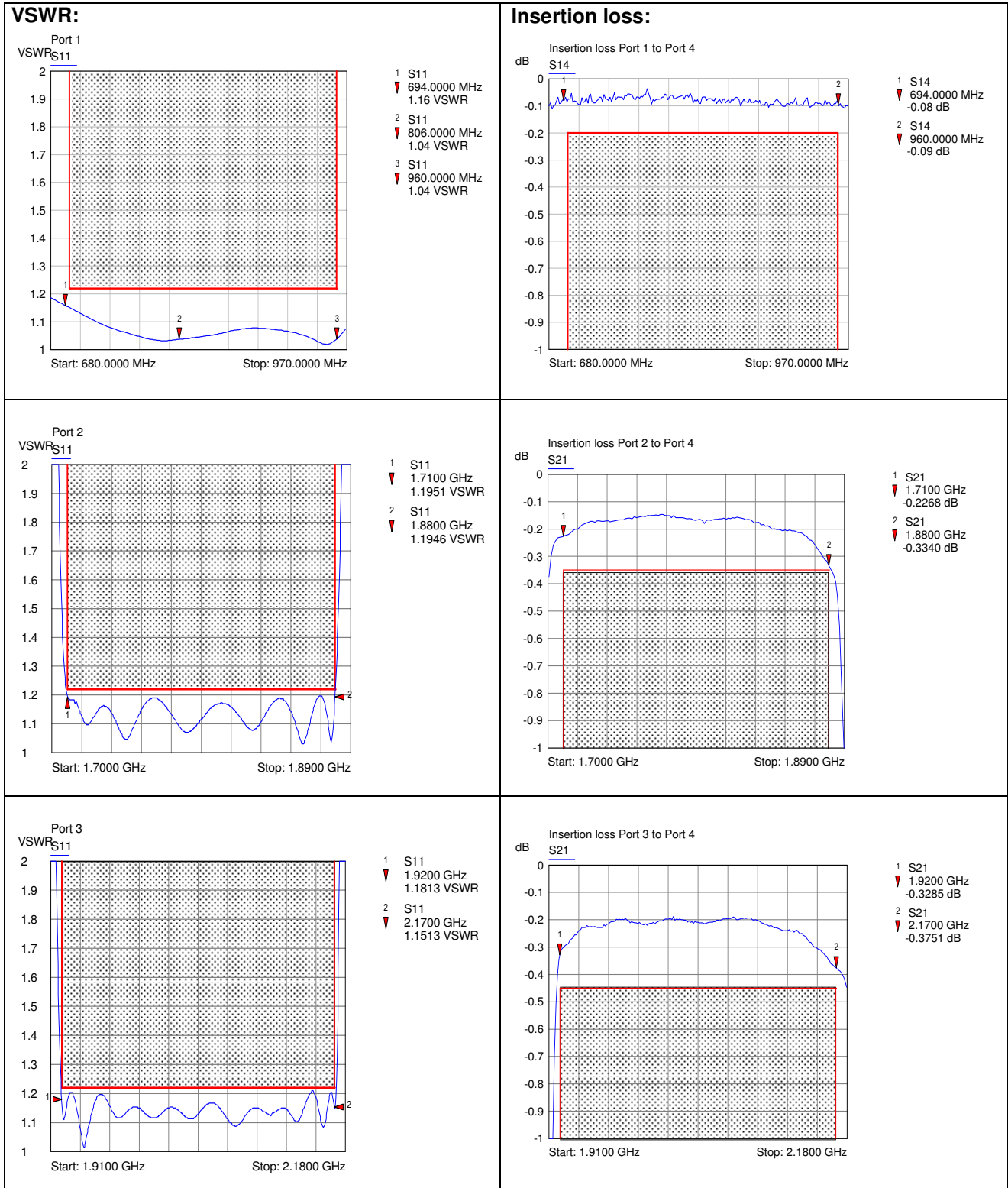


Standard:

4.3-10 female (50 ohms): IEC 61169-54

modifications reserved

Measurements:



Isolation:

