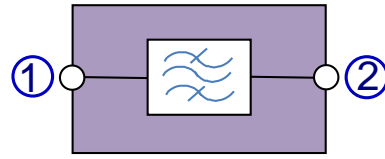


Bandpass Filter 1710-1875 MHz



Picture not binding



block diagram

Electrical characteristics

Part number	BN 610038	
Version	Single	
Frequency range	Pass band	1710– 1875 MHz
	Stop band	1879 – 1900 MHz
Insertion loss	≤ 1.4 dB	
Stop band attenuation	≥ 30 dB	
VSWR	≤ 1.25	
Impedance	50 Ohm	
Passive intermodulation (IM3), 3rd order @ 2 x 20 W	≤ -155 dBc	
DC-by-pass	N/A	
Power Rating	200W (CW) max.	

Mechanical characteristics

Connectors	4.3-10 female
Dimensions, approx. (Excluding brackets and connectors)	150 mm x 44 mm x 185 mm (Width x Height x Depth)
Weight, approx.	3 kg
Wall / Mast mounting	Part of delivery

Environmental conditions

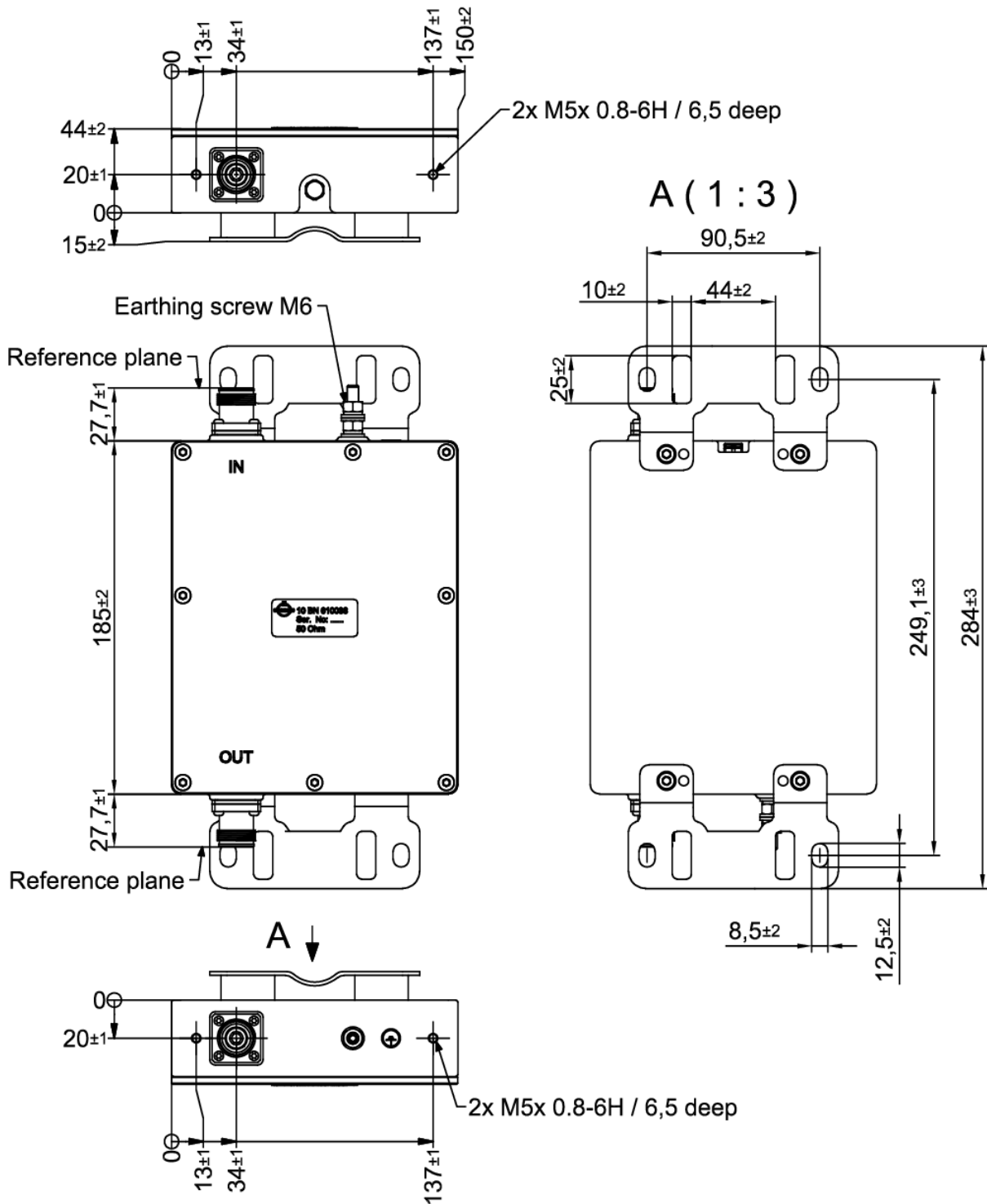
Class. of environmental conditions	ETSI EN 300019-1-1 Class 1.2 ETSI EN 300019-1-2 Class 2.3 ETSI EN 300019-1-4 Class 4.1E
Degree of protection	IP 65 (Outdoor)
Operation Ambient temperature range	-40 °C to +55 °C
Storage Ambient temperature range	-55 °C to +85 °C
Relative humidity, max.	95% (non-condensing)

SPINNER GmbH
 This document is proprietary to us.
 All rights reserved. Any use, transfer, or reproduction of this document
 or the know-how contained therein requires our express consent.

Template TD-00002Y

Bandpass Filter 1710-1875 MHz

Outline (all dimensions in millimeter)



SPINNER GmbH
This document is proprietary to us.
All rights reserved. Any use, transfer, or reproduction of this document
or the know-how contained therein requires our express consent.

Standard:
4.3-10 female (50 ohms): IEC 61169-54

modifications reserved!

Template TD-00002Y