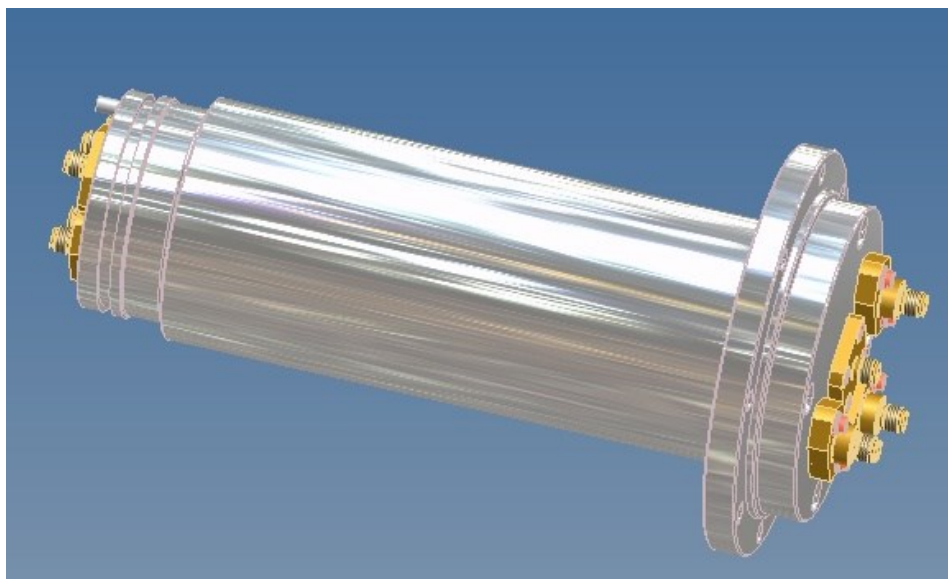


## DATA SHEET



Outline and dimensions as per drawing 532434-0E

## Radio frequency channel characteristics

Channel designation	Channel 1	Channel 2	Channel 3	Channel 4
Interface type / material / surface finish	SMA-f (50 $\Omega$ ) copper alloy / gold plated	SMA-f (50 $\Omega$ ) copper alloy / gold plated	SMA-f (50 $\Omega$ ) copper alloy / gold plated	SMA-f (50 $\Omega$ ) copper alloy / gold plated
Frequency range	DC to 150 MHz	DC to 150 MHz	DC to 150 MHz	DC to 150 MHz
Peak power capability, max.	1 kW*	1 kW*	1 kW*	1 kW*
Average power capability, max.	10 W	10 W	10 W	10 W
VSWR, max.	1.2	1.2	1.2	1.2
VSWR variation over rotation, max.	0.18	0.18	0.18	0.18
Insertion loss, max.	0.4 dB	0.4 dB	0.4 dB	0.4 dB
Insertion loss variation over rotation, max.	0.15 dB	0.15 dB	0.15 dB	0.15 dB
Phase variation over rotation, max.	2 deg	2 deg	2 deg	2 deg
Isolation, min.	40 dB (between all channels)			

\* Condition: - operating altitude, max. 3000m;

## General mechanical data

Rotating speed, max.	70 rpm	Life, min.	5 x 10 <sup>6</sup> revolutions
Starting torque, max. at 20°C	0,4 Nm	Torque during rotation, max. at 20°C	0,4 Nm
Axial load on interface, max.	40 N	Radial load on interface, max.	40 N
Case material	aluminum alloy	Case surface finish	painted (TBD)
Weight, approx.	1.9 kg	Marking	adhesive label



### General environmental conditions

Operation	
Ambient temperature range	-30 to +60°C
Relative humidity, max.	95% (non-condensing)
IP protection level	IP 30 per EN 60529
Storage	
Ambient temperature range	-40 to +70°C
Relative humidity, max.	95% (non-condensing)