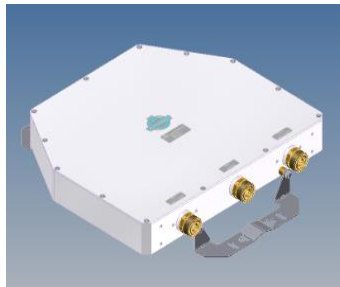
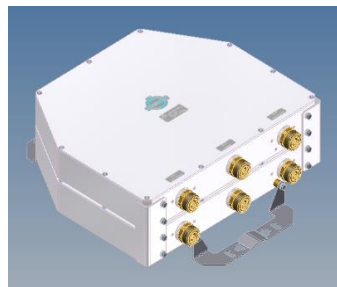


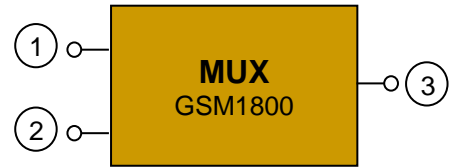
Multiplexer GSM 1800 6 Cavities with DC-by-pass



Single Unit



Double Unit



Block Diagram

| Part number | | BN 570665 | BN 570644 |
|---|--------------------------|---|-----------------------|
| Version | | single | double |
| Connectors | | 7-16 socket (50 Ohms) | |
| Frequency range | | 1710 – 1785 MHz (UL) 1805 – 1880 MHz (DL) | |
| Tuning example Frequency range | Passband | 1710 – 1730 MHz (UL1) / 1805 – 1825 MHz (DL1) 1735 – 1755 MHz (UL2) / 1830 – 1850 MHz (DL2) | |
| Factory tunable bandwidth range | | 10 - 20 MHz | |
| Out of Band Rejection | Pass band = Band gap | ≥ 60 dB | |
| | Pass band = 2 x Band gap | ≥ 40 dB | |
| | 2 x Pass band = Band gap | ≥ 90 dB | |
| Insertion loss | Pass band = Band gap | ≤ 1.4 dB | |
| | Pass band = 2 x Band gap | | |
| | 2 x Pass band = Band gap | | |
| VSWR | | ≤ 1.25 | |
| Power rating | | 100 W (CW) | |
| Intermodulation products in RX band with 2 x 43dBm (20 W) | | ≤ -150 dBc typical: ≤ -160 dBc | |
| DC-by-pass | | Port 1 to Port 3 and Port 2 to Port 3 (max. 1A per input max. 60V DC(AISG Standard, 2.0, § 6.4)) | |
| Degree of protection | | IP 65 | |
| Environmental conditions | | ETSI EN 300019-1-1 Class 1.2 ETSI EN 300019-1-2 Class 2.3 ETSI EN 300019-1-3 Class 4.1E | |
| Wall / Mast mounting | | part of delivery | |
| Paint color | | Grey | |
| Dimensions (LxWxH) (without mounting kit) | | 339mm x 370mm x 53mm | 339mm x 376mm x 111mm |
| Weight | | 9.2 kg | 20 kg |
| Temperature range | | -5 °C – +65 °C | |