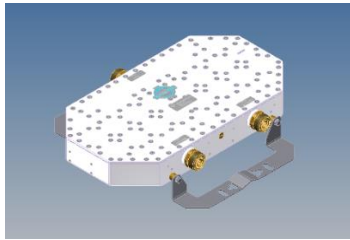
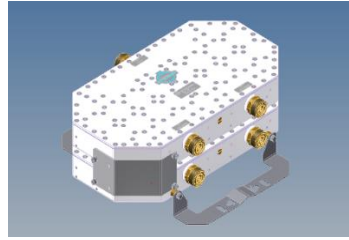


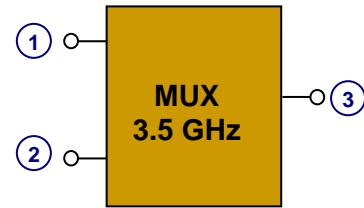
Multiplexer 3.5 GHz



BN 570752



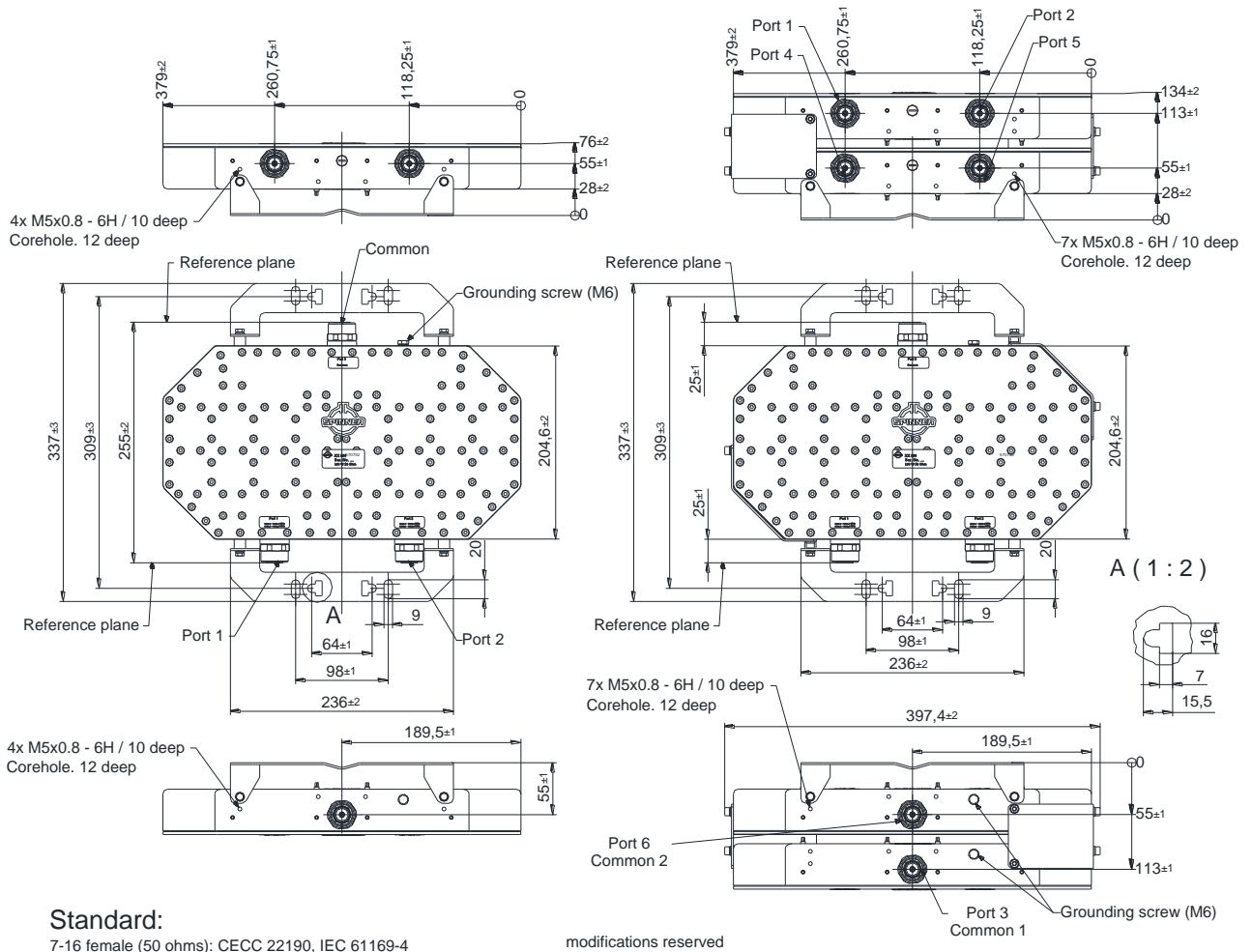
BN 570753



block diagram

Part number	BN 570752	BN 570753
Version	Single	Double
Connectors	7-16 female	
Frequency range	3400 - 3800 MHz (Tunable)	
Frequency range Tuning example Port 1 Port 2 Port 3	3400 - 3410 / 3452 - 3473 MHz 3500 - 3510 / 3552 - 3573 MHz Common	
Insertion loss Tuning example	≤ 1.0 dB	
Isolation Tuning example	≥ 30 dB	
VSWR	≤ 1.25	
Power rating	60 W (CW) max. per input port	
Impedance in/out	50 Ω	
Passive Intermodulation (IM3) @ 2 x 20 W	n/a	
Degree of protection	IP 65	
Environmental conditions	ETSI EN 300019-1-1 Class 1.2 ETSI EN 300019-1-2 Class 2.3 ETSI EN 300019-1-4 Class 4.1E	
Temperature range	-25 °C – +65 °C	
Wall / Mast mounting	Part of delivery	
Weight	~ 6.0 kg	~ 12.0 kg
Dimensions (L x W x H) (excluding mounting brackets)	255 mm x 379 mm x 48 mm	255 mm x 379 mm x 106 mm

Dimension:



BN 570752

BN 570753