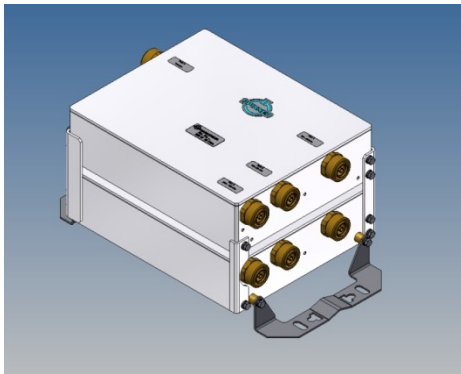
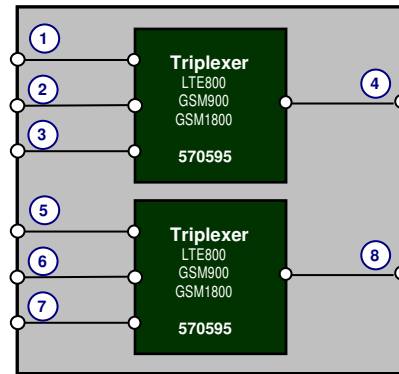


Double Unit Triplexer LTE800 / GSM900 / GSM1800



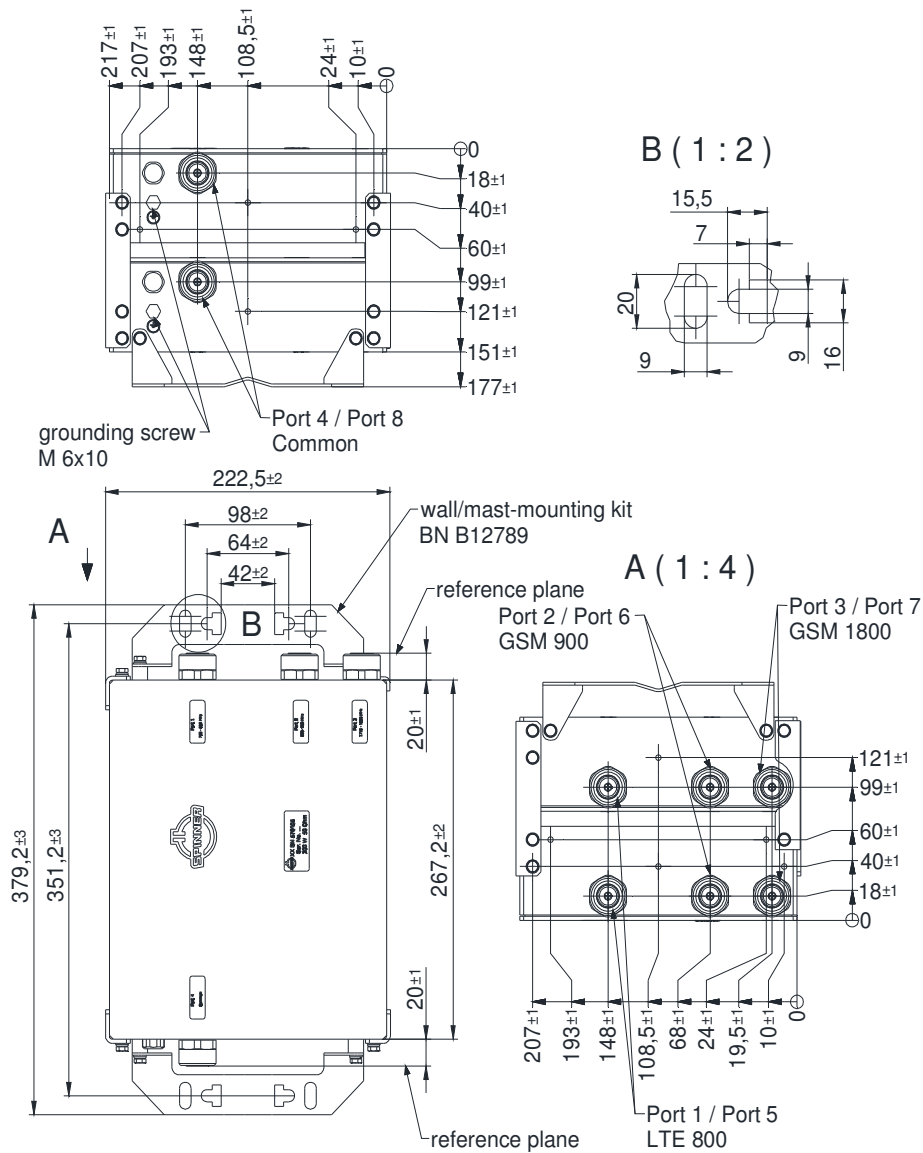
not binding



block diagram

Part number		BN 576105
Connectors		7-16 socket (50 Ohms)
Frequency range	Port 1, 5	790 - 862 MHz (LTE800)
	Port 2, 6	880 - 960 MHz (GSM900)
	Port 3, 7	1710 - 1880 MHz (GSM1800)
Insertion loss		≤ 0.6 dB (typ. 0.4 dB)
Isolation	Port 1 ↔ Port 2 or Port 5 ↔ Port 6	≥ 50 dB (typ. 60 dB)
	Port 1 → Port 3 or Port 5 → Port 7	≥ 50 dB (typ. 70 dB)
	Port 2 → Port 3 or Port 6 → Port 7	≥ 50 dB (typ. 60 dB)
	Port 3 → Port 1 or Port 7 → Port 5	≥ 50 dB (typ. 70 dB)
	Port 3 → Port 2 or Port 7 → Port 6	≥ 50 dB (typ. 60 dB)
	VSWR	
Power rating	Port 1, 5	300 W CW
	Port 2, 6	300 W CW
	Port 3, 7	300 W CW
IM-value 3rd order @ 2 x 20 W		≤ -155 dBc typical: ≤ -160 dBc
DC by-pass		max. 1A per input max. 60V DC (AISG Standard, 2.0, § 6.4)
Degree of protection		IP 68
Environmental conditions		ETSI EN 300019-1-1 Class 1.2 ETSI EN 300019-1-2 Class 2.3 ETSI EN 300019-1-4 Class 4.1E
Weight		17.0 kg
Size		310 x 222 x 151 mm
Wall/ Mast mounting		part of delivery
Temperature range		-40 °C – +65°C

Dimensions:

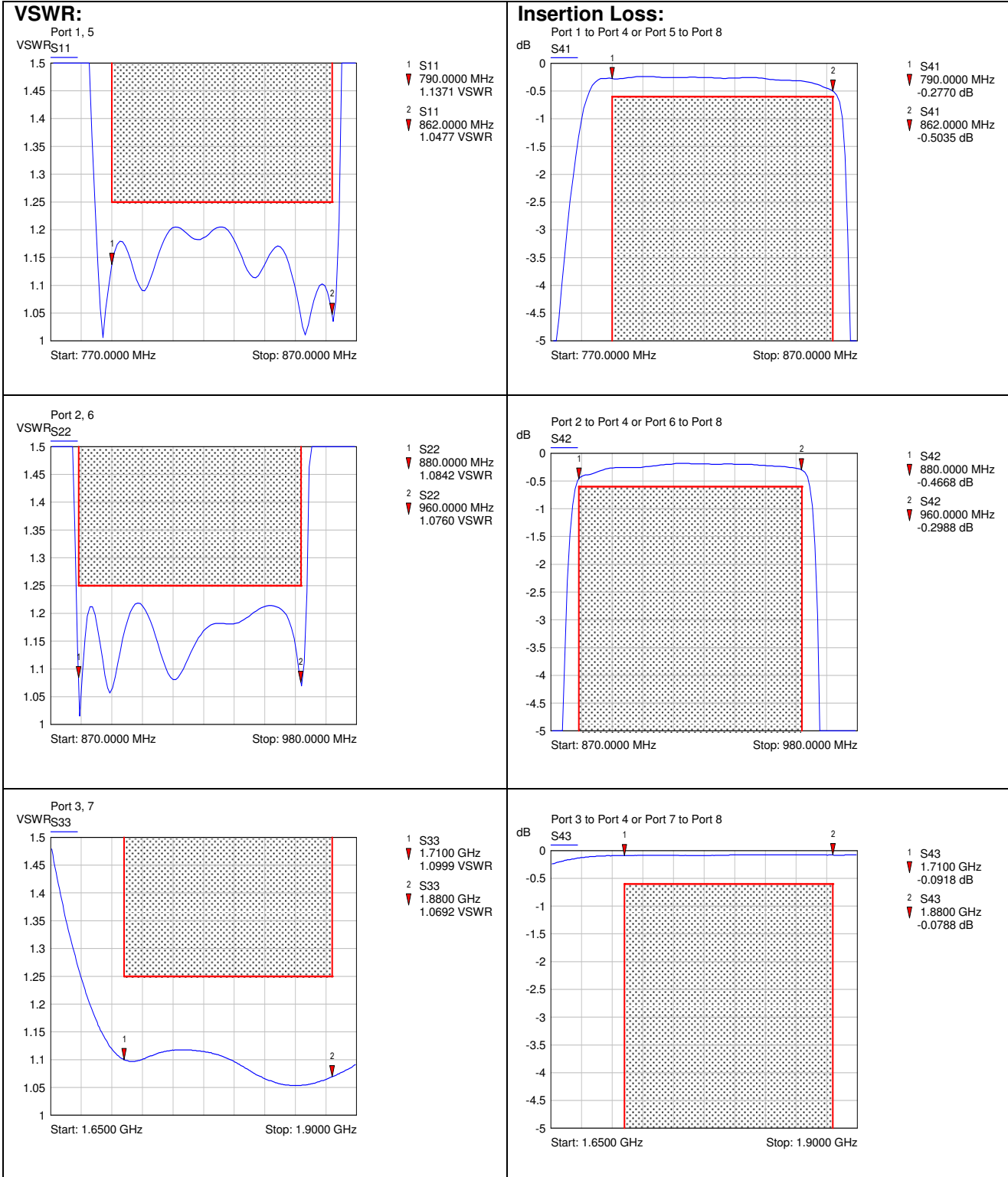


Standard:

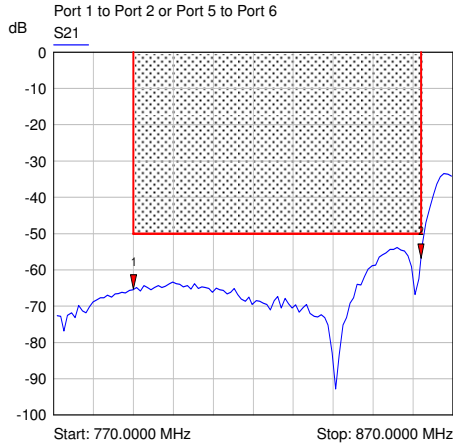
7-16 female (50 ohms): EN122190, IEC 61169-4

modifications reserved

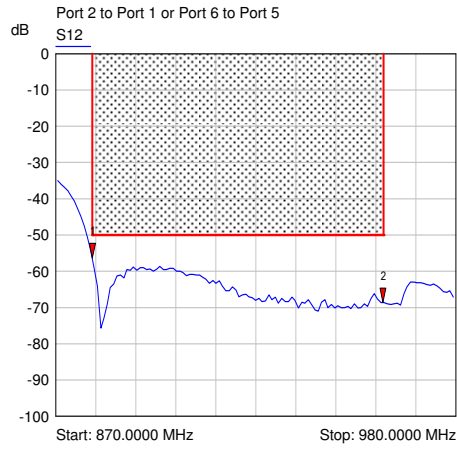
Measurement:



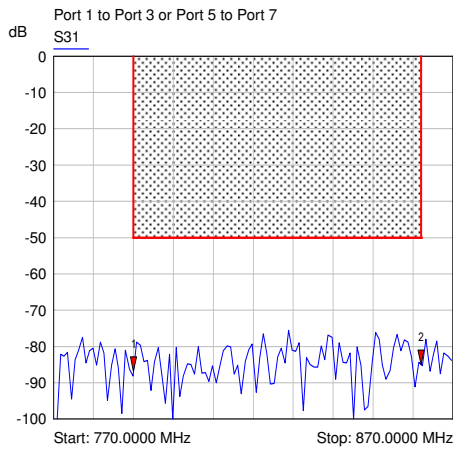
Isolation:



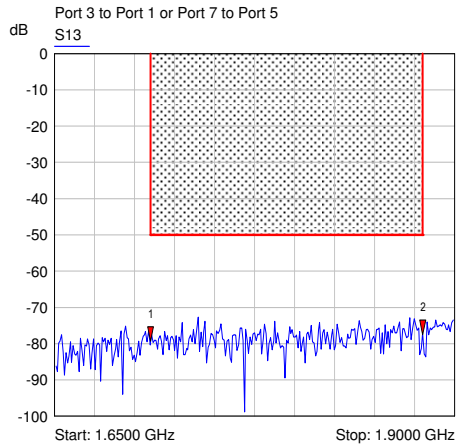
- 1 S21
▼ 790.0000 MHz
-65.3768 dB
- 2 S21
▼ 862.0000 MHz
-56.8408 dB



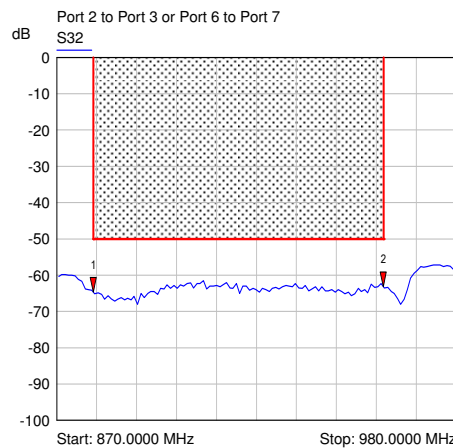
- 1 S12
▼ 880.0000 MHz
-56.3857 dB
- 2 S12
▼ 960.0000 MHz
-68.6567 dB



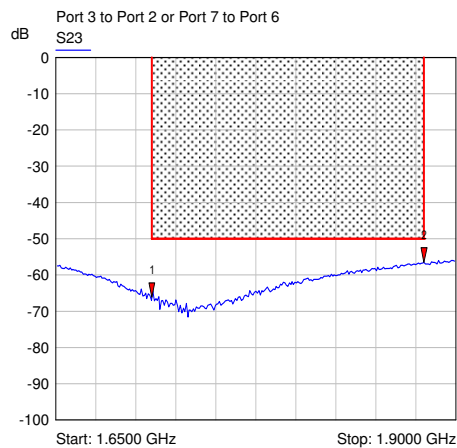
- 1 S31
▼ 790.0000 MHz
-86.9075 dB
- 2 S31
▼ 862.0000 MHz
-84.8770 dB



- 1 S13
▼ 1.7100 GHz
-79.3841 dB
- 2 S13
▼ 1.8800 GHz
-77.4117 dB



- 1 S32
▼ 880.0000 MHz
-64.6782 dB
- 2 S32
▼ 960.0000 MHz
-63.2340 dB



- 1 S23
▼ 1.7100 GHz
-66.1552 dB
- 2 S23
▼ 1.8800 GHz
-56.5502 dB