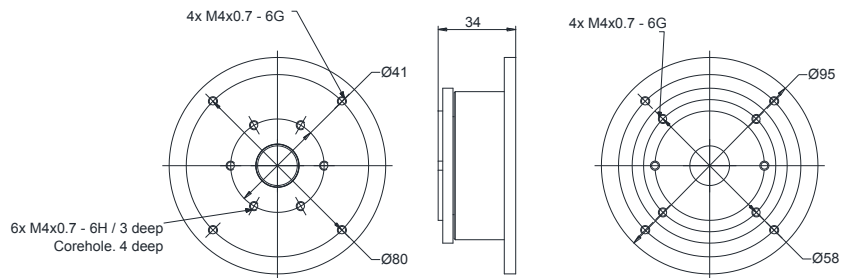
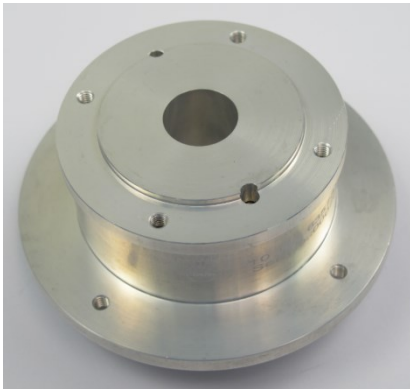


Single Channel Rotary Joint || BN 635731



Outline and dimensions as per drawing: 635731-0E Issue B All dimensions in millimeter

Radio frequency channel characteristics

Channel designation	Channel 1
Interface type / material / surface finish	Customer specific circular waveguide flanges, H11 mode, threads M4 aluminum alloy / chromated
Interface orientation	Style I
Frequency range	10.95 to 13.0 GHz and 13.5 to 14.5 GHz
Peak power capability	20 kW *)
Average power capability	500 W
VSWR, max. / typ.	1.2 / 1.1
VSWR variation over rotation, max. / typ.	0.1 / 0.05
Insertion loss, max. / typ.	0.2 dB / 0.1 dB
Insertion loss variation over rotation, max. / typ.	0.05 dB / 0.02 dB

*) Condition: - Operating altitude if not pressurized, max. 2000 m

Single Channel Rotary Joint || BN 635731

Mechanical data

Rotating speed, max.	300 rpm
Life, min.	200 x 10 ⁶ revolutions
Torque (room temperature), max.	0.20 Nm
Interface loads, max.	±10 N in axial direction ±10 N in radial direction
Case material	aluminum alloy, sea water resistant
Case surface finish	chromate conversion coat per MIL-DTL-5541 type 2
IP protection level	IP40 per EN 60529 (all interfaces connected with appropriate gaskets)
Weight, approx.	0.4 kg
Marking	laser engraving

Environmental conditions

Operation	
Ambient temperature range	-40 to +71°C
Relative humidity, max.	95% (non-condensing)
Storage	
Ambient temperature range	-55 to +85°C
Relative humidity, max.	95% (non-condensing)