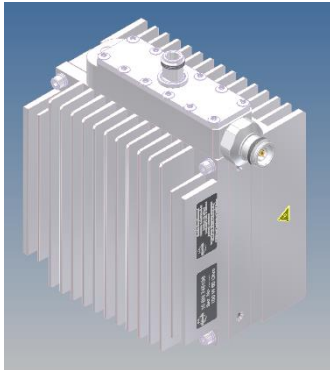
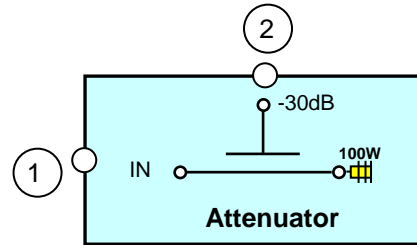


Low intermodulation power attenuator, 30 dB



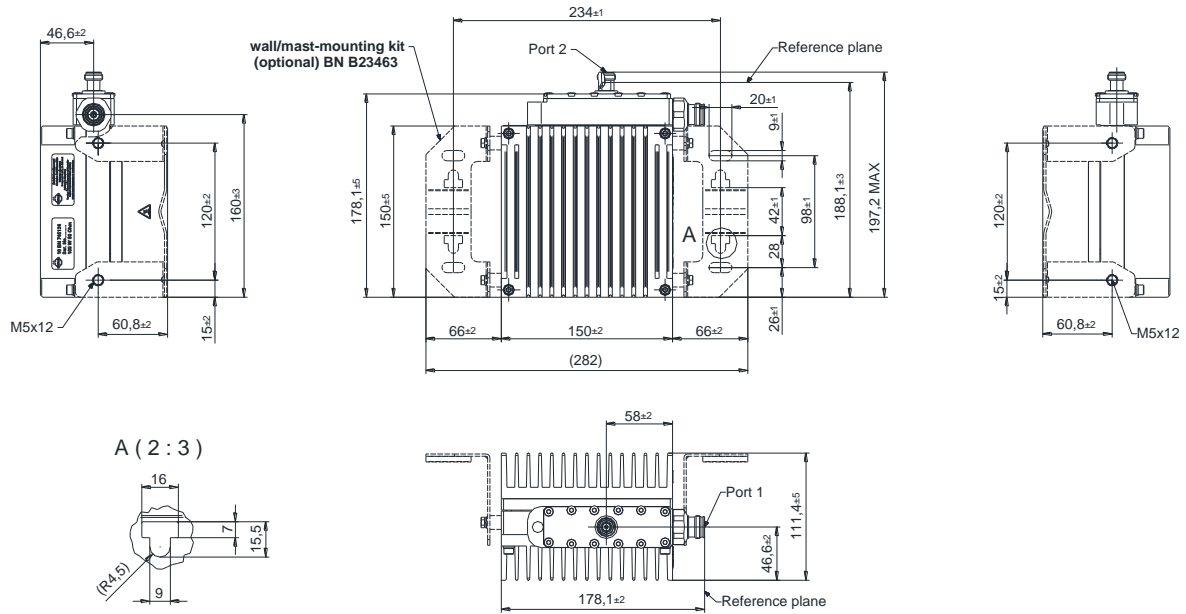
not binding



block diagram

Part number	BN 745136	
Connectors	Port 1	4.3-10 socket (50 Ohms)
	Port 2	N socket (50 Ohms)
Frequency range	380 – 960 MHz / 1710 – 2700 MHz	
Attenuation	30 dB ± 2 dB	
VSWR	≤ 1.2	
Power rating	100W @ 25°C ambient temperature 50W @ 55°C ambient temperature	
IM – value (3rd order at 2 x 20 W)	≤ -140 dBc (typ. ≤ -145 dBc) @ 380 - 694 MHz ≤ -150 dBc (typ. ≤ -155 dBc) @ 694 - 800 MHz ≤ -160 dBc (typ. ≤ -165 dBc) @ 800 - 2700MHz	
Degree of protection	IP 40	
Environmental conditions	ETSI EN 300019-1-1 Class 1.2 ETSI EN 300019-1-2 Class 2.3 ETSI EN 300019-1-3 Class 3.3	
Weight	Approx. 4.0 kg	
Temperature range	-40 – +55 °C	
Wall / Mast mounting	to be ordered separately under BN B23463	

Dimensions:



Standard:

4.3-10 female (50 ohms): 62299
 N female (50 ohms) : CECC 22210, IEC 61169-16

modification reserved!