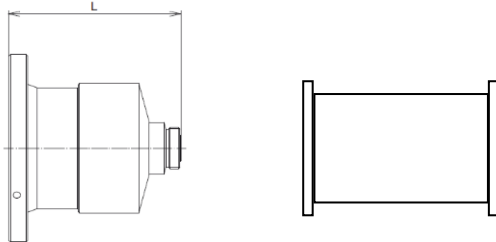


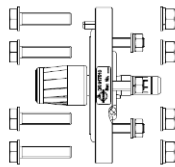
ADAPTORS (75 Ohms)

- for measurements SPINNER offers adaptors to N female with excellent matching ($V_{SWR} \leq 1.02$)
- adaptors between various flanges can be used for full power
- short adaptors with integrated coupling elements save space and cost



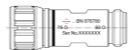
Adaptors – long made of aluminum

Part number	Connector 1	Connector 2	Frequency range	VSWR	Length L	Weight
BN 750060	6 1/8" EIA	N female	0 – 860 MHz	≤ 1.02	180 mm	3,5 kg
BN 750076	7 3/16" MYAT	7 3/16" MYAT	0 – 752 MHz	≤ 1.02	183 mm	5 kg
BN 750086	8 3/16" MYAT	8 3/16" MYAT	0 – 700 MHz	≤ 1.02	190 mm	7,3 kg



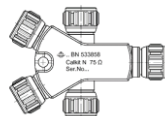
Adaptors – short made of brass including O-rings and screw set made of stainless steel

Part number	Connector 1	Connector 2	Frequency range	VSWR	Length L flange-flange	Weight
BN 750070	7 3/16" MYAT male	6 1/8" EIA male	0 – 752 MHz	≤ 1.02	190 mm	11,3 kg
BN 750080	8 3/16" MYAT male	6 1/8" EIA male	0 – 700 MHz	≤ 1.02	193 mm	15,1 kg



Adaptor N 75 Ω to 50 Ω – mechanical adaptor without RF matching

Part number	Connector 1	Connector 2	Frequency range	VSWR	Length L	Weight
BN 876780	N male 75 Ω	N female 50 Ω	DC – 3 GHz	n.a.	52 mm	0.06 kg



Calibration Kit N 75 Ω OSLT

Part number	Connectors	Impedance	Frequency range	Length L	Weight
BN 533858R000	N female 75 Ω	75 Ω	DC – 3 GHz	94 mm	0.25 kg