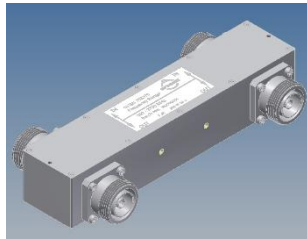
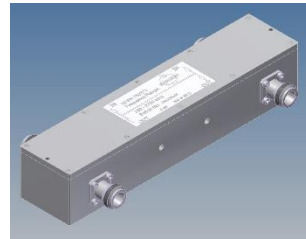


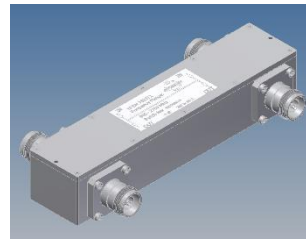
3 dB Coupler (X-Style)



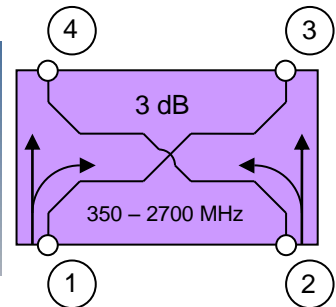
BN 753370



BN 753371



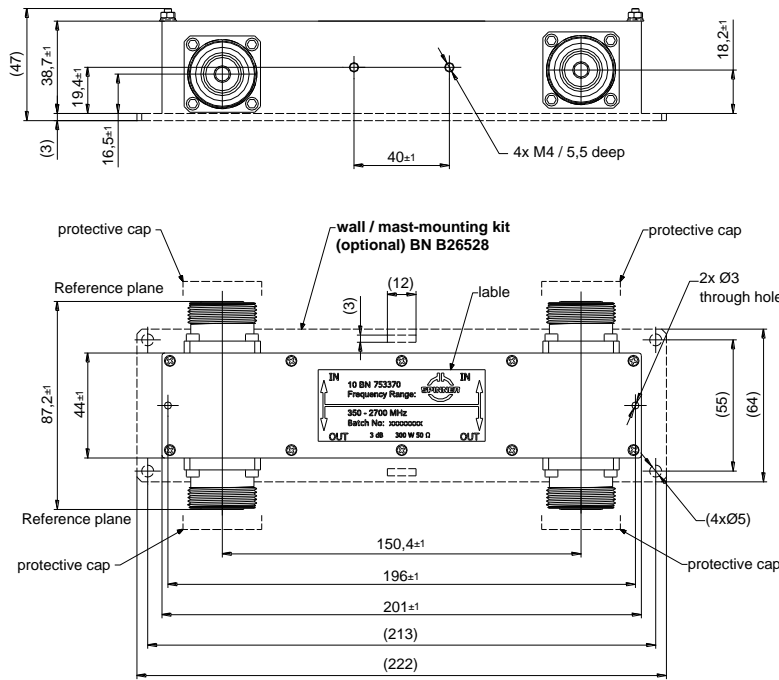
BN 753372



Block Diagram

Part number	BN 753370	BN 753371	BN 753372
Connectors	7-16 socket (50 Ohms)	N socket (50 Ohms)	4.3-10 socket (50 Ohms)
Frequency range	350 - 2700 MHz		
Insertion loss	≤ 3.9 dB		
Isolation	≥ 23 dB (typical ≥ 25 dB)		
VSWR	≤ 1.25		
Power rating	300 W (CW) Max. Per port		
IM – value 3rd order at 2 x 20 W	≤ -150 dBc typical ≤ -155 dBc		
Degree of protection	IP 65 (outdoor)		
Environmental conditions	ETSI EN 300019-1-1 Class 1.2 ETSI EN 300019-1-2 Class 2.3 ETSI EN 300019-1-4 Class 4.1E		
Weight	Approx. 1 kg		
Wall / Mast mounting	to be ordered separately under BN B26528		
Temperature range	-40 – +80 °C		

Dimensions:

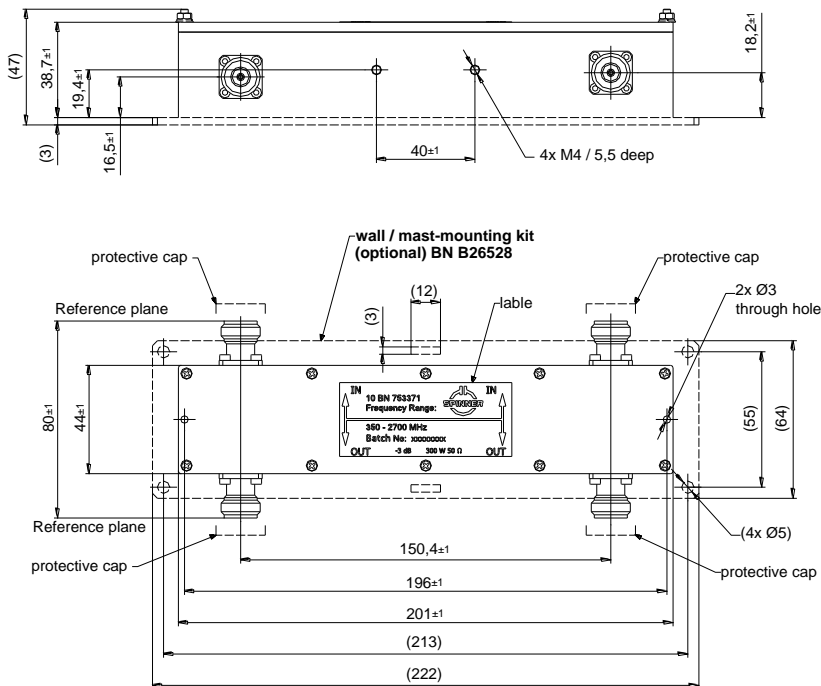


BN 753370

Standard:

7-16 female (50 ohms): CECC 22190, IEC 61169-4

modifications reserved

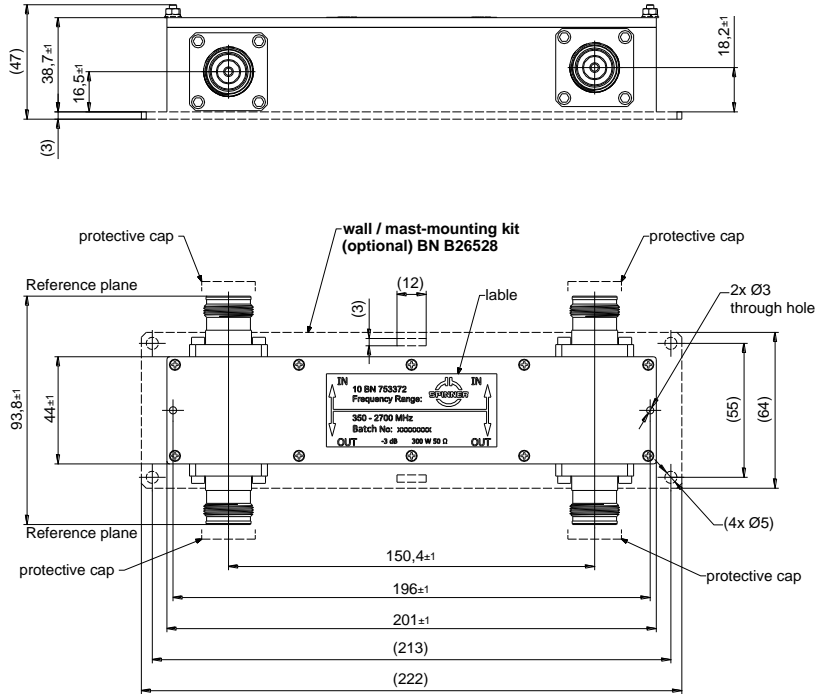


BN 753371

Standard:

N female (50 ohms): IEC61169-16, CECC 22210

modifications reserved



BN 753372

Standard:

4,3-10 female (50 ohms): IEC 61169-54

modifications reserved

Measurement:

