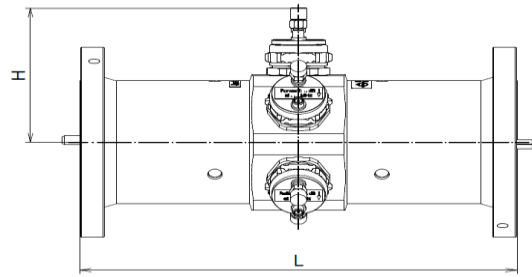


DIRECTIONAL COUPLER “PLUS” 3 1/8” EIA || BN 80 02 71

- enhanced coupling
- suitable in a wide frequency range
- variable coupling factor
- low VSWR, high directivity
- extremely compact
- for indoor application



BN 80 02 71C0003

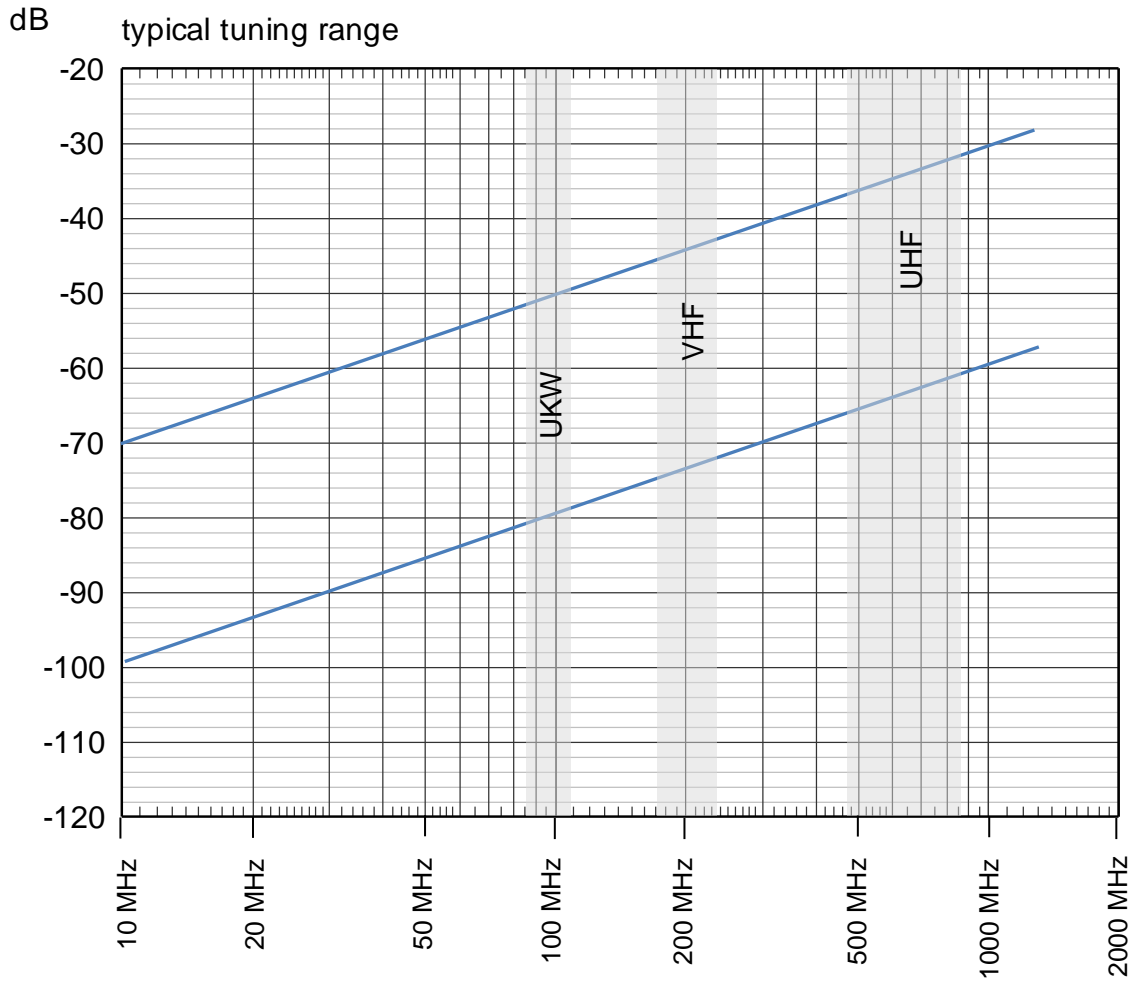
Part number	1-way 2-way 3-way 4-way 5-way	BN 80 02 71C0001 BN 80 02 71C0002 BN 80 02 71C0003 BN 80 02 71C0004 BN 80 02 71C0005
Frequency range	10 MHz to 1300 MHz	
Proof voltage (at sea level)	≤ 14.0 kV	
Average power	10 MHz 50 MHz 100 MHz 230 MHz 860 MHz	≤ 210 kW ≤ 94 kW ≤ 67 kW ≤ 44 kW ≤ 23 kW
Coupling range	10 MHz 50 MHz 108 MHz 230 MHz 860 MHz	70 – 100 dB 58 – 88 dB 51 – 81 dB 46 – 75 dB 37 – 63 dB See diag.1
VSWR main line	≤ 1.04 (10 MHz to 860 MHz) ≤ 1.12 (860 MHz to 1300 MHz)	
Variation of coupling attenuation	$20 \log \frac{f_{Ref}}{f_{Searched}}$	
Coupling tolerance, max.	± 0.1 dB	
Directivity	≥ 35 dB (10 MHz to 860 MHz) ≥ 25 dB (860 MHz to 1300 MHz)	
Insertion loss	≤ 0.05 dB	
Connectors main line	3 1/8 EIA	
Connectors coupled line	SMA female	
Termination load 1W included	Please take care that with the chosen coupling attenuation not more than 1 W appears at a port of the coupled line.	
Dimensions (L x H) mm	240 x 110.5	
Weight	3.5 kg	
Environmental conditions	See TD-00060	

SPINNER GmbH
 This document is proprietary to us.
 All rights reserved. Any use, transfer, or reproduction of this document
 or the know-how contained therein requires our express consent.

Template TD-00002

DIRECTIONAL COUPLER "PLUS" 3 1/8" EIA || BN 80 02 71

diagram 1



SPINNER GmbH
This document is proprietary to us.
All rights reserved. Any use, transfer, or reproduction of this document
or the know-how contained therein requires our express consent.

Template TD-00002