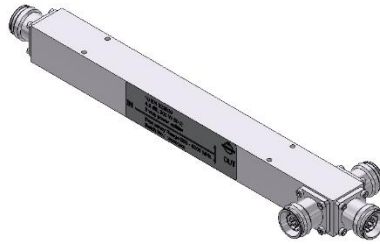


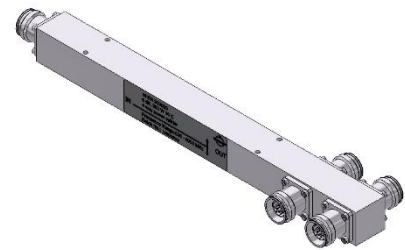
Cavity 2, 3, 4-Way- power splitter



2-way Splitter



3-way Splitter



4-way Splitter

Electrical characteristics

Part number	BN 923028	BN 923029	BN 923030
Splitting ratio	1: 0.5: 0.5	1: 0.33: 0.33: 0.33	1: 0.25: 0.25: 0.25: 0.25
Frequency range:	555-6000 MHz		
Split Loss	3.0 dB	4.8 dB	6.0 dB
Insertion Loss	≤0.3 dB @555-2700 MHz ≤0.4 dB @2700-6000 MHz	≤0.4 dB @555-2700 MHz ≤0.6 dB @2700-6000 MHz	≤0.4 dB @555-2700 MHz ≤0.6 dB @2700-3800 MHz ≤1.0 dB @3800-6000 MHz
VSWR (Port 1)	≤ 1.3	≤ 1.3	≤ 1.35
Impedance	50 Ohm		
Passive intermodulation (IM3), 3rd order @ 2 x 20W	-163 dBc max.		
Power Rating:	≤ 300 W CW		

Mechanical characteristics

Connectors	4.3-10 female		
Dimensions, approx.	See drawing		
Weight, approx.	0,4 Kg	0,4 Kg	0,5 Kg
Color	Grey (RAL 7047)		
Wall / Mast mounting	to be ordered separately under BN B30342		

Environmental conditions

Class. of environmental conditions	ETSI EN 300019-1-1 Class 1.2 ETSI EN 300019-1-2 Class 2.3 ETSI EN 300019-1-4 Class 4.1E
Degree of protection	IP 65 (Outdoor)
Operation Ambient temperature range	-30 °C to +65 °C
Storage Ambient temperature range	-40 °C to +85 °C
Relative humidity, max.	95% (non-condensing)

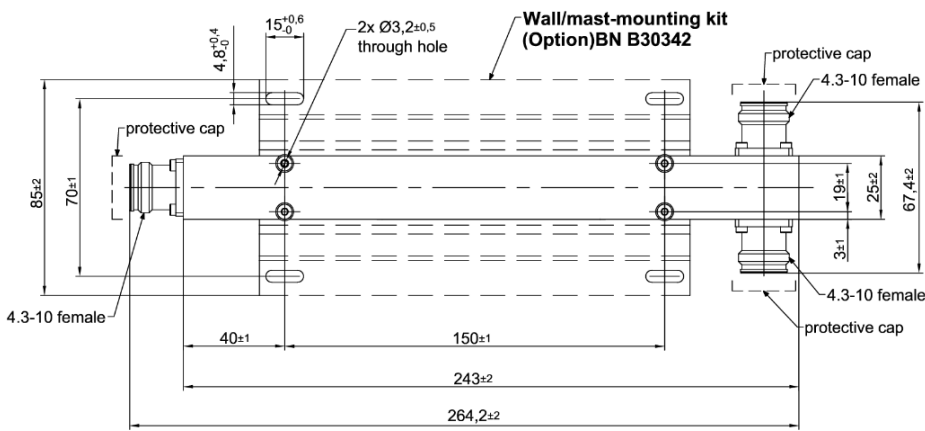
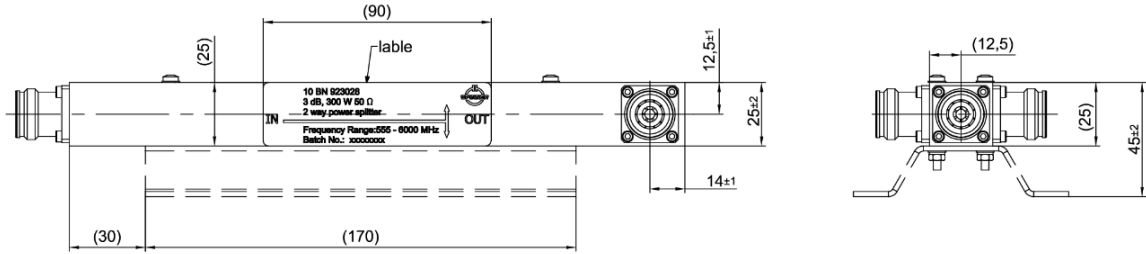
SPINNER GmbH
 This document is proprietary to us.
 All rights reserved. Any use, transfer, or reproduction of this document
 or the know-how contained therein requires our express consent.

Template TD-00002Y

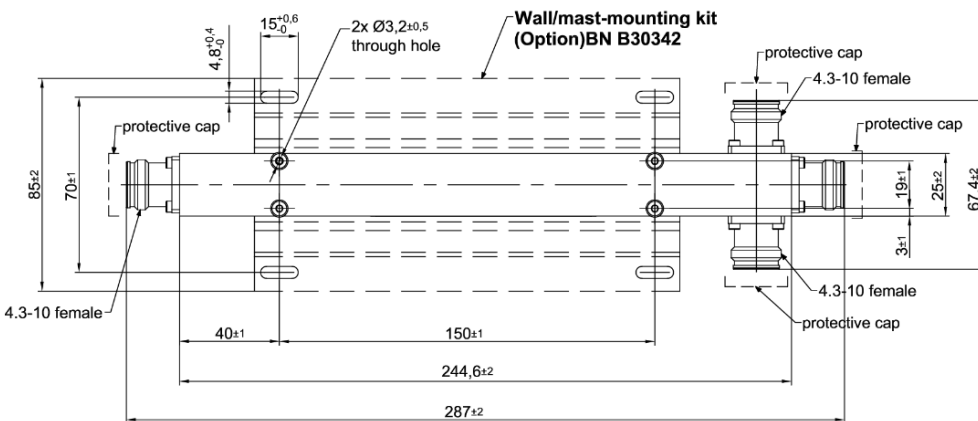
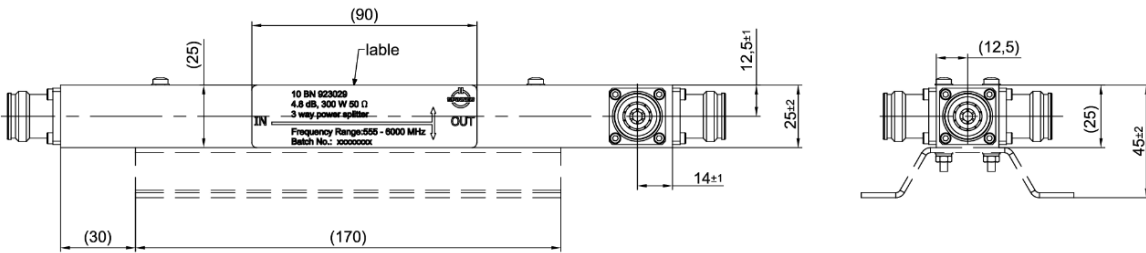
Cavity 2, 3, 4-Way- power splitter

Outline (all dimensions in millimeter)

BN 923028 2-way Splitter



BN 923029 3-way Splitter

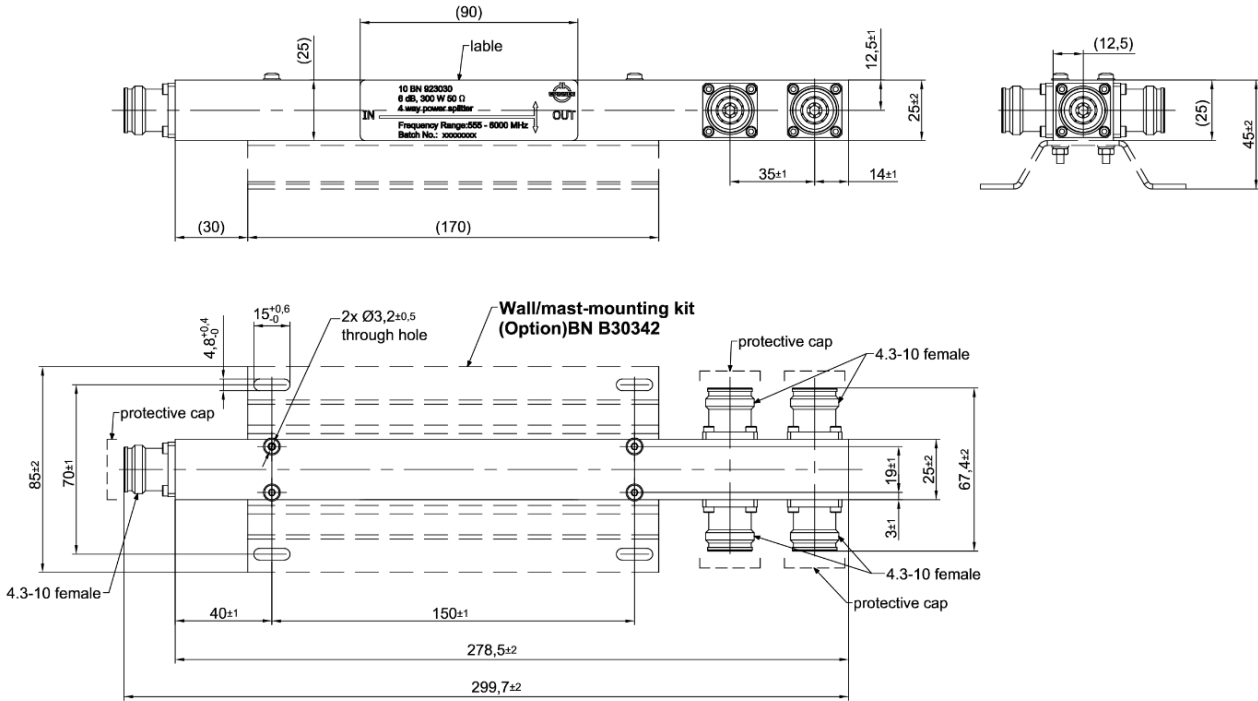


SPINNER GmbH
This document is proprietary to us.
All rights reserved. Any use, transfer, or reproduction of this document
or the know-how contained therein requires our express consent.

Template TD-00002Y

Cavity 2, 3, 4-Way- power splitter

BN 923030 4-way Splitter



Standard:

4.3-10 female (50 ohms): IEC 61169-54

modifications reserved!

SPINNER GmbH
 This document is proprietary to us.
 All rights reserved. Any use, transfer, or reproduction of this document
 or the know-how contained therein requires our express consent.

Template TD-00002Y