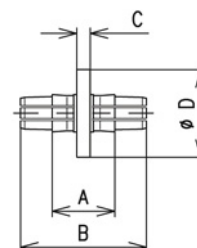


Coupling Elements, Sealant and Gas Inlets

EIA coupling elements have PTFE insulator and stainless steel screws.

Coupling elements comply with EIA STD RS-225, IEC 60339, MIL-F 24044 or IEC 60169-4/-5.

O-ring and set of stainless steel screws are included.



EIA Coupling Elements

Connector Size		7/8" EIA	1 5/8" EIA	3 1/8" EIA	4 1/2" EIA 339 IEC 50-105	6 1/8" EIA
Coupling element complete with O-ring and screw set		BN 911715	BN 918311	BN 918710	BN 822810	BN 919310
Dimensions (mm)	A	23.8	29.8	45.1	45.0	63.0
	B	49.1	59.8	101.1	76.5	108.0
	C	4.7	6.35	9.5	9.8	11.0
	D	20.6	41.5	81.3 ¹	104.75	153.7
Spare O-ring and screw set		BN B22425	BN B22391	BN B22426	BN B22427	BN B22428



PLAST 2000 Sealant

Part Number	
BN 151671	PLAST 2000 tube 20 cm ³ (can be screwed directly into the connector)
BN 150597	PLAST 2000 tube 70 cm ³ (injection gun BN 070551 necessary)
BN 070551	Injection gun for PLAST 2000 with thread M9



Gas Inlet Adapters

Part Number	
BN 004773	Gas inlet M10 x 0.75 for Heliflex cables 38 - 78 for hose with 6 mm inner diameter
BN 004777	Gas inlet M10 x 0.75 for Heliflex cables 38 - 78 for hose with 10 mm inner diameter
BN 004782	Gas inlet M10 x 0.75 for Heliflex cables 38 - 78 for hose with 13 mm inner diameter
BN 004771	Gas inlet M12 x 1.5 for Heliflex cables 118 - 618 for hose with 6 mm inner diameter
BN 004770	Gas inlet M12 x 1.5 for Heliflex cables 118 - 618 for hose with 10 mm inner diameter
BN 004781	Gas inlet M12 x 1.5 for Heliflex cables 118 - 618 for hose with 13 mm inner diameter