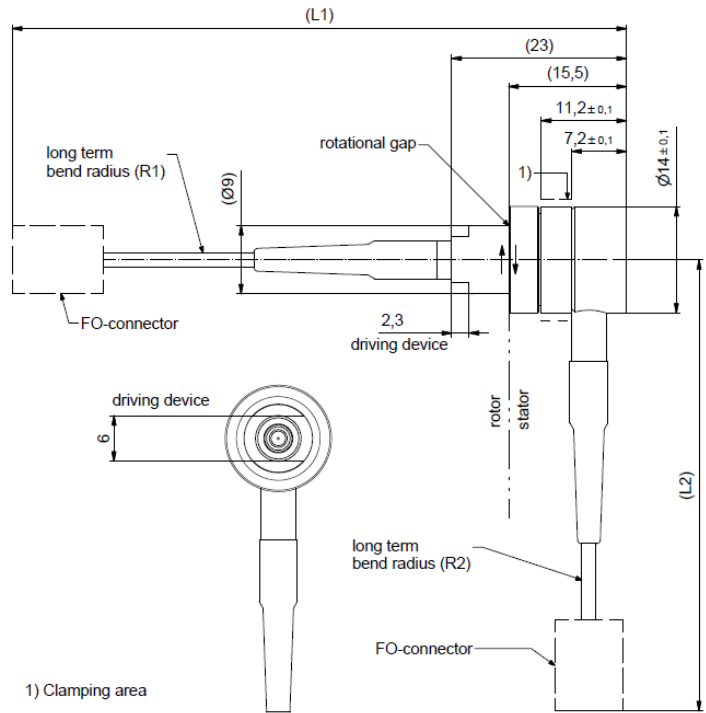
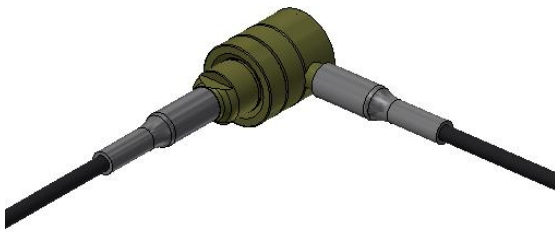


Rotary Joint || BN 549391C0102



all dimensions in millimeter

Fiber optic channel characteristics

Channels	1 CH
FO connector / material (axial / radial)	LC-APC / ceramic LC-APC / ceramic
Fiber type	Singlemode E9 / 125 $\mu\text{m}$ / 900 $\mu\text{m}$ buffer / 2.7mm cable
Fiber length (L1 / L2)	1500 $\pm 100$ mm / 1500 $\pm 100$ mm
Long term bend radius, min. (R1 / R2)	60 mm / 60 mm
Wavelength	1310 nm / 1550 nm
Average power capability, max.	200 mW / 23 dBm
Return loss, min. / typ.	50 dB / 55 dB
Insertion loss, max. / typ.	3.0 dB / 2.0 dB
Insertion loss variation over rotation, max.	1.0 dB

Rotary Joint || BN 549391C0102

**Mechanical characteristics**

Rotating speed rotor, max. / nominal	3000 rpm / 2000 rpm
Rotating speed stator, max. / nominal	150 rpm / 100 rpm
Life, min.	20 x 10 <sup>6</sup> revolutions
Torque (room temperature), max.	0.06 Nm @ rotation
Interface loads, max.	no loads allowed
Case material	copper alloy, corrosion resistant
Case surface finish	no finish
IP protection level	IP40 per EN 60529 (all interfaces connected with appropriate gaskets)
Weight, approx.	0.06 kg
Marking	laser engraving

**Environmental conditions**

<b>Operation</b>	
Ambient temperature range	-40 °C to +71 °C
Relative humidity, max.	95% (non-condensing)
<b>Storage</b>	
Ambient temperature range	-40 °C to +71 °C
Relative humidity, max.	95% (non-condensing)

**Applicable documents**

Technical information	"Rotary Joints – Glossary", Technical Document TD-00021, Spinner GmbH
-----------------------	---