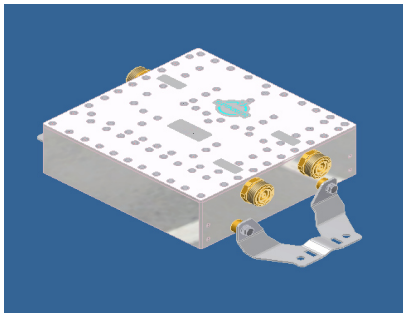
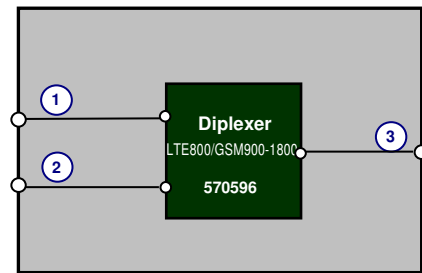


Diplexer LTE800 / GSM900-1800



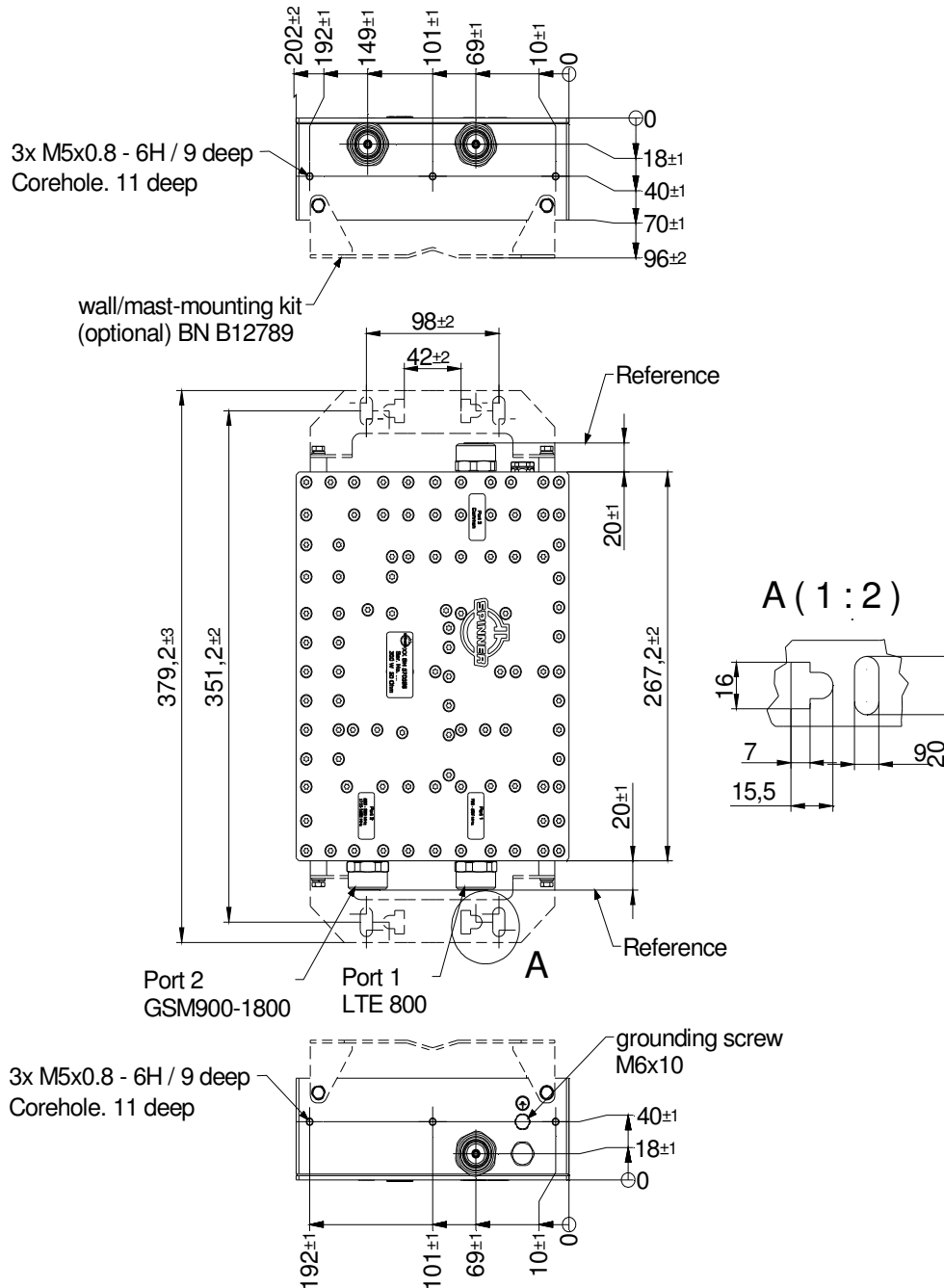
not binding



block diagram

| Part number                     | BN 570596   |   |
|---------------------------------|---|---|
| Connectors                      | 7-16 socket (50 Ohms)   |   |
| Frequency range                 | Port 1  | 790 - 862 MHz (LTE800)                              |
|                                 | Port 2  | 880 - 960 MHz (GSM900)<br>1710 - 1880 MHz (GSM1800) |
| Insertion loss                  | ≤ 0.5 dB (typ. 0.3dB)   |   |
| Isolation                       | 790 - 862 MHz   | ≥ 50 dB (typ. 60dB)                                 |
|                                 | 880 - 960 MHz   | ≥ 50 dB (typ. 60dB)                                 |
|                                 | 1710 - 1880 MHz   | ≥ 50 dB (typ. 70dB)                                 |
| VSWR                            | ≤ 1.25 (typ. 1.2)   |   |
| IM – value 3rd order @ 2 x 20 W | ≤ -155 dBc   typical: ≤ -160 dBc  |   |
| DC by-pass                      | max. 1 A per input max. 60 V DC<br>(AISG Standard, 2.0, § 6.4)                                |   |
| Power rating                    | 300 W CW  |   |
| Degree of protection            | IP 68   |   |
| Environmental conditions        | ETSI EN 300019-1-1 Class 1.2<br>ETSI EN 300019-1-2 Class 2.3<br>ETSI EN 300019-1-4 Class 4.1E |   |
| Temperature range               | -40 °C – +65°C  |   |
| Size                            | 310 x 202 x 70 mm   |   |
| Weight                          | 6.7kg   |   |
| Wall/ Mast mounting             | to be ordered separately under BN B12789  |   |

**Dimensions:**



**Standard:**

7-16 female (50 ohms): EN122190, IEC 61169-4

modifications reserved

Measurement:

