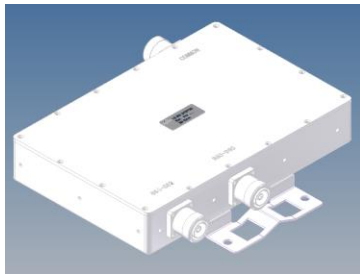
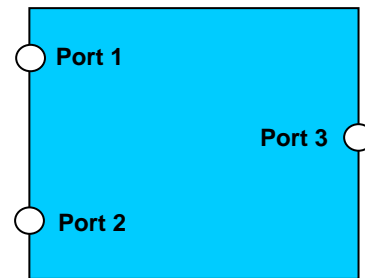


## Diplexer LTE700-LTE800/GSM900



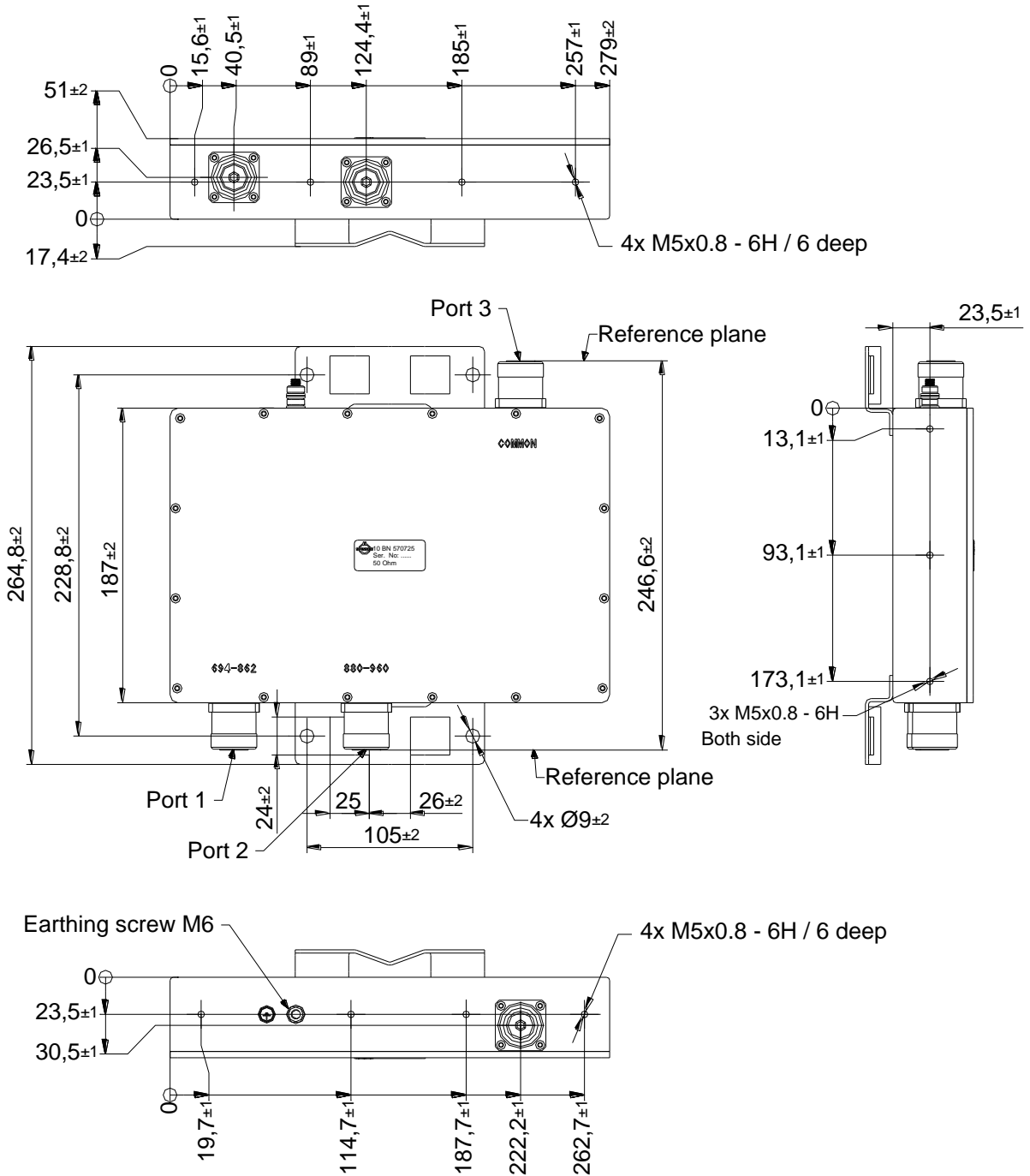
not binding



Block diagram

<b>Part number:</b>			<b>BN 570725</b>
Connector:			7/16 female
Version:			single
Frequency range:	LTE700-800	Port 1	694 – 862 MHz
	GSM900	Port 2	880 – 960 MHz
Insertion loss:	Port 1 → Port 3		≤ 0.6 dB
	Port 2 → Port 3		≤ 0.6 dB
Group delay:			≤ 190 ns
	Group delay variation LTE:		≤ 20 ns (in any 180kHz)
	Group delay variation		≤ 15 ns (@880MHz-885MHz)
Isolation:	Port 1 → Port 2		≥ 50 dB
	Port 2 → Port 1		≥ 50 dB
VSWR:	Port 1		≤ 1.25
	Port 2		≤ 1.25
Power rating:	per input port		≤ 120 W
Intermodulation products:			≤ -159 dBc
3rd order @ 2 x 20 W			
Degree of protection:			IP 65
mated / 1bar, 1h, ≤18°C			
Environmental conditions:			ETSI EN 300019-1-1 Class 1.2
			ETSI EN 300019-1-2 Class 2.3
			ETSI EN 300019-1-4 Class 4.1E
Temperature range:	Operation:		-15 °C – +55 °C
	Transportation:		-40 °C – +85 °C
	Storage:		-25 °C – +70 °C
Weight:			8 kg max.

**Dimensions:**



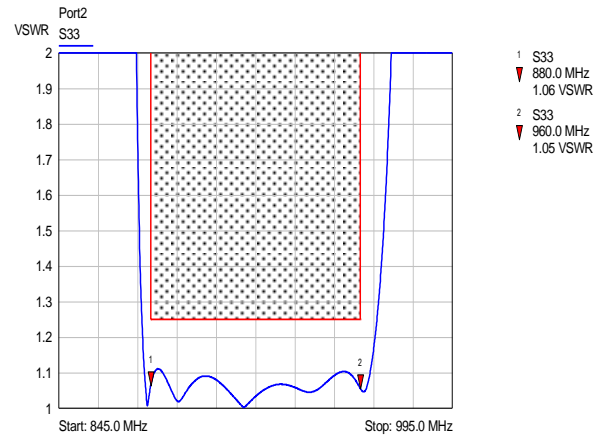
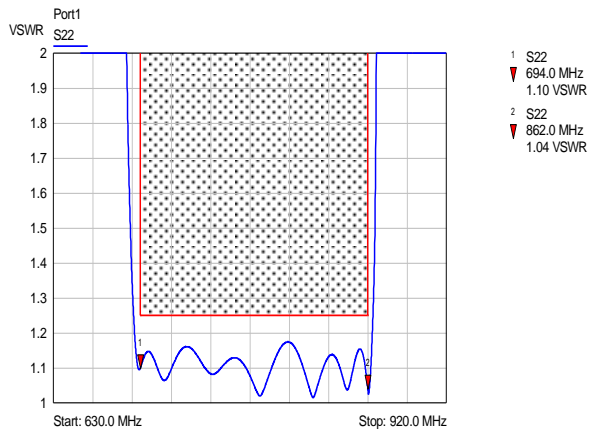
**Standard:**

7-16 female (50 ohms): CECC 22190, IEC 61169-4

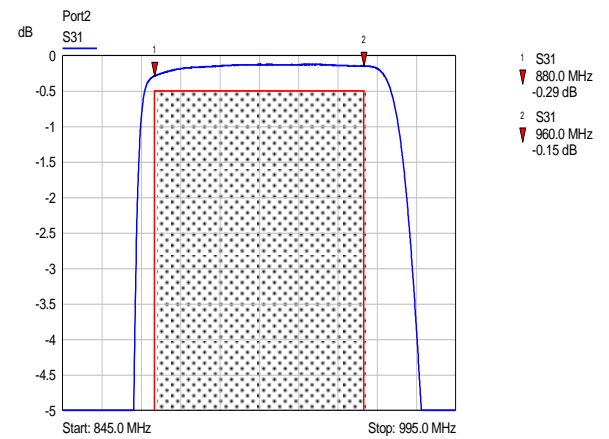
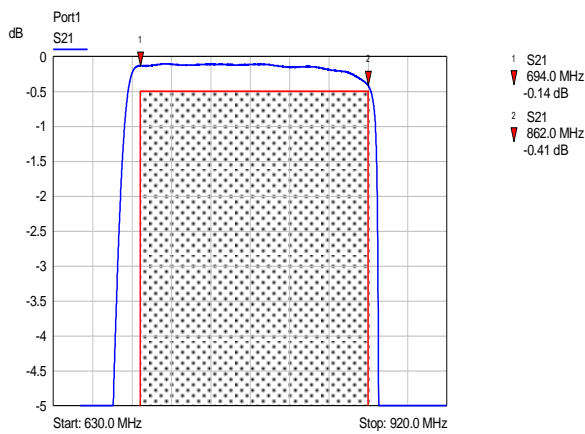
modifications reserved

**Measurements:**

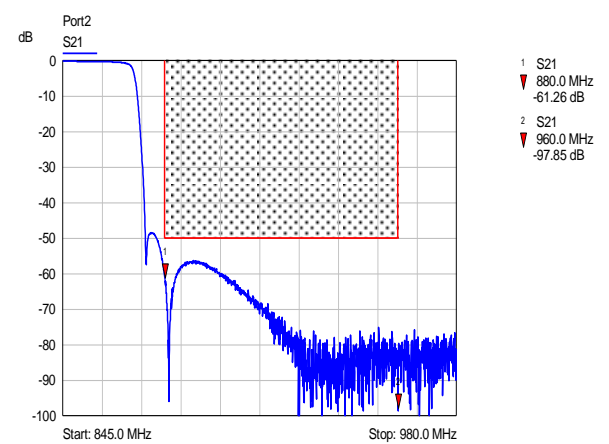
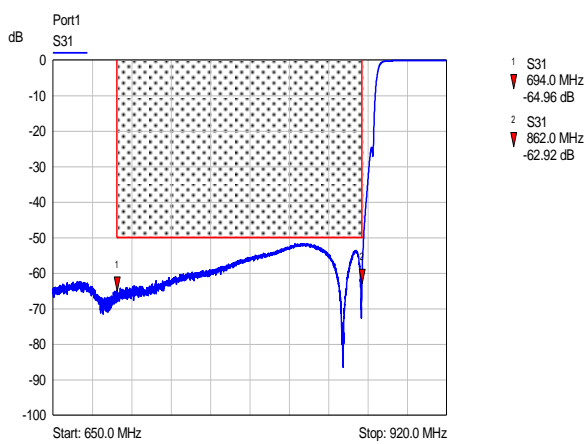
**VSWR:**



**Insertion loss:**



**Stopband rejection:**



**Group delay:**

