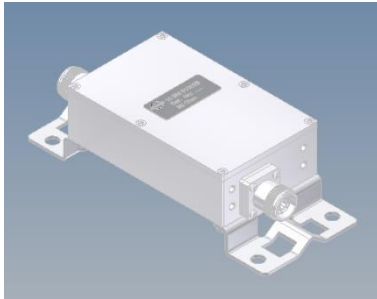
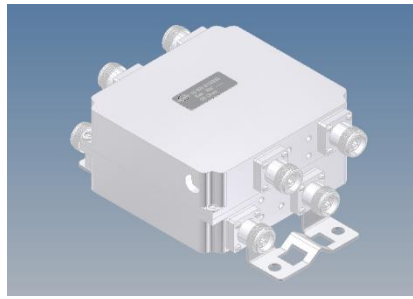


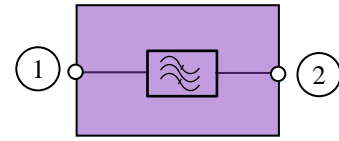
Bandpass Filter 3.5 GHz



Single



Quadruple



Block diagram

Electrical characteristics

Part number	BN 610029	BN 610030
Version	Single	Quadruple
Frequency range	3410 - 3490 MHz	
Insertion loss	≤ 1.3 dB @ 3410 - 3420 MHz ≤ 0.5 dB @ 3420 - 3490 MHz	
VSWR	≤ 1.25	
Out of band rejection	≥ 30 dB @ 694 - 3400 MHz	
IM- value 3rd order @ 2 x 20 W	-150 dBc max. / -155 dBc typ.	
Impedance	50 Ohm	
Power Rating	10 W (CW) max. per input port	

Mechanical characteristics

Connectors	4.3-10 female (50 ohms)	
Dimensions, approx. (Excluding brackets and connectors)	77 mm x 126 mm x 37 mm (Width x Height x Depth)	138 mm x 126 mm x 66 mm (Width x Height x Depth)
Weight, approx.	1.1 kg	3 kg
Color	Grey (RAL 7047)	
Wall / Mast mounting (optional)	Part of delivery	

Environmental conditions

Class. of environmental conditions	ETSI EN 300019-1-1 Class 1.2 ETSI EN 300019-1-2 Class 2.3 ETSI EN 300019-1-4 Class 4.1E
Degree of protection	IP67
Operation Ambient temperature range	-40 °C to +55 °C
Storage Ambient temperature range	-40 °C to +85 °C
Relative humidity, max.	95% (non-condensing)

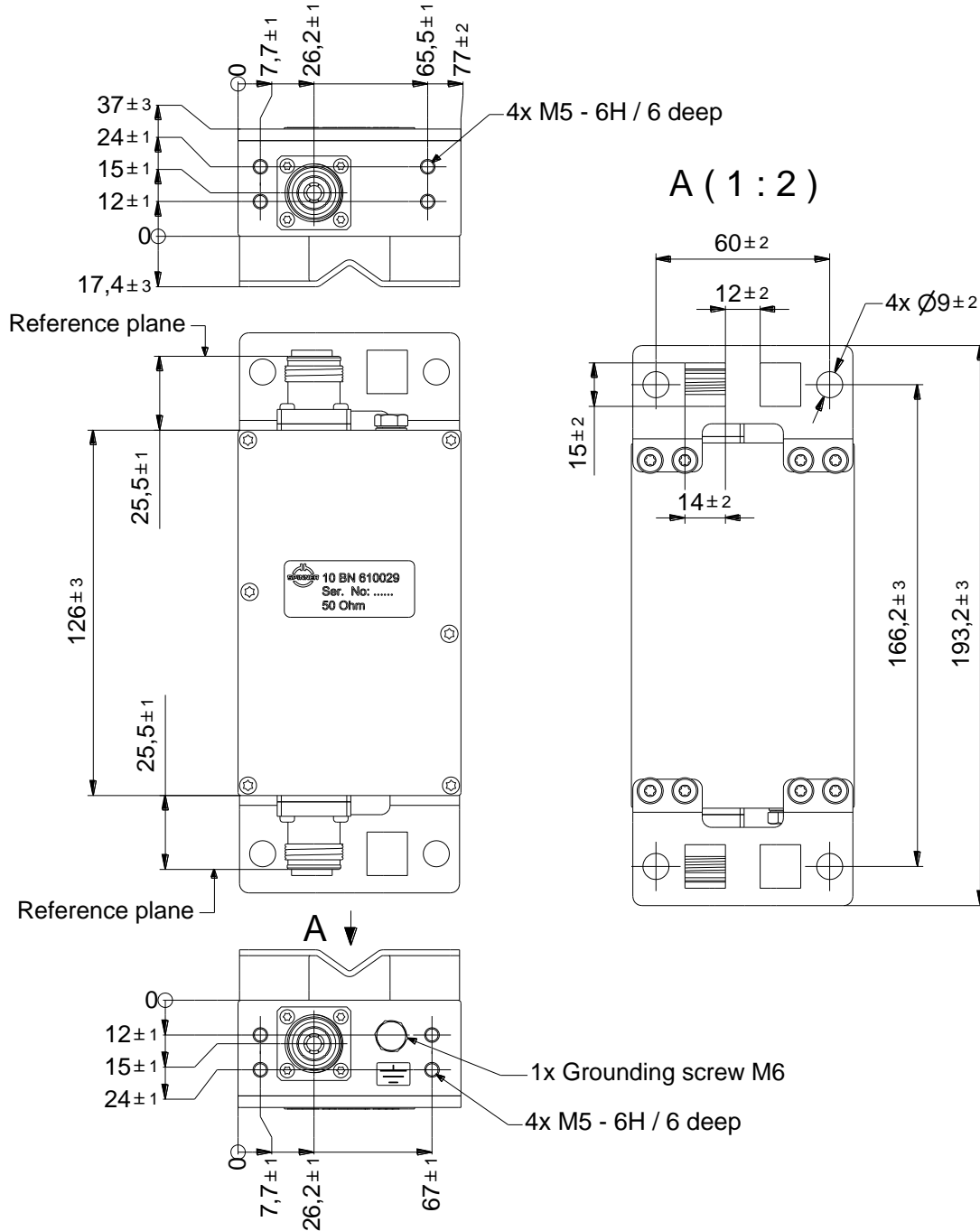
SPINNER GmbH
 This document is proprietary to us.
 All rights reserved. Any use, transfer, or reproduction of this document
 or the know-how contained therein requires our express consent.

Template TD-00002Y

Bandpass Filter 3.5 GHz

Outline (all dimensions in millimeter)

BN 610029



SPINNER GmbH
This document is proprietary to us.
All rights reserved. Any use, transfer, or reproduction of this document
or the know-how contained therein requires our express consent.

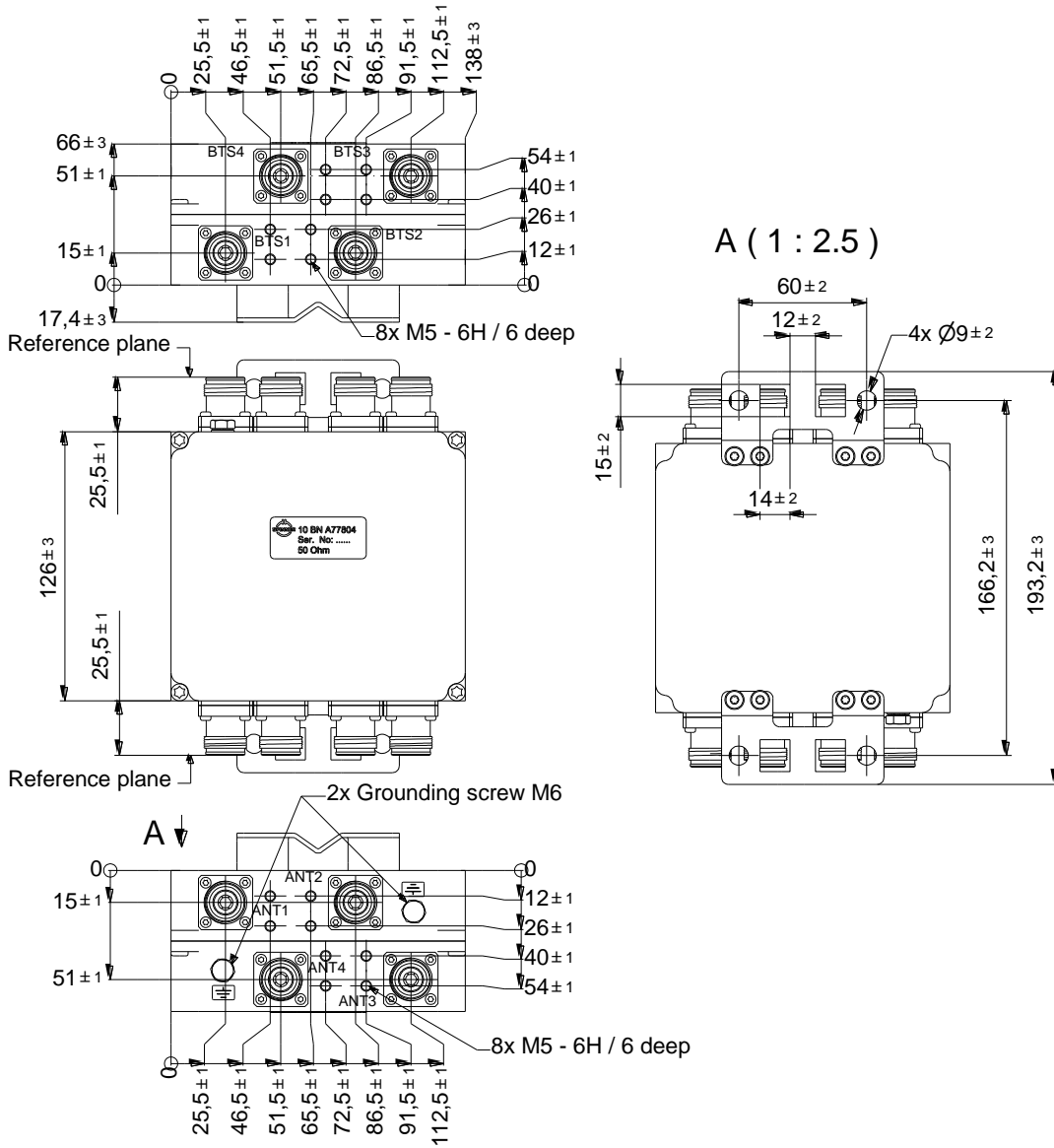
Template TD-00002Y

Standard:
4.3-10 female (50 ohms): IEC 61169-54

Modification reserved!

Bandpass Filter 3.5 GHz

BN 610030



Standard:

4.3-10 female (50 ohms): IEC 61169-54

Modification reserved!

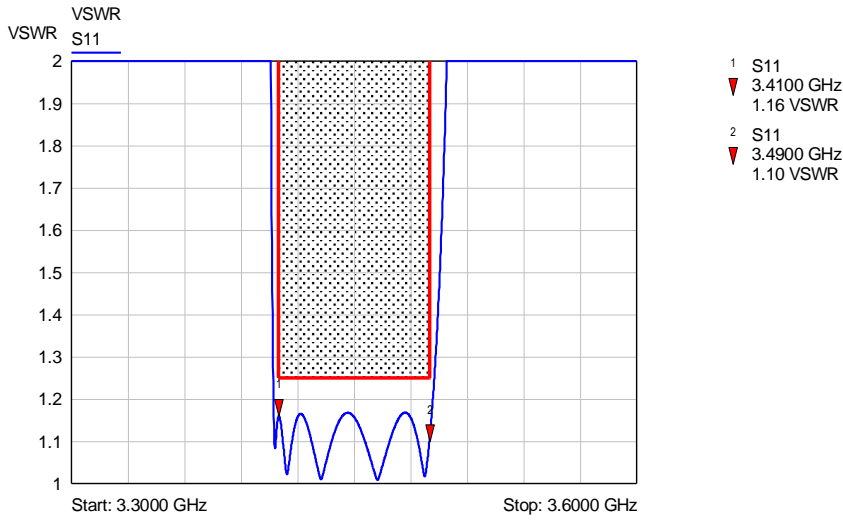
SPINNER GmbH
This document is proprietary to us.
All rights reserved. Any use, transfer, or reproduction of this document
or the know-how contained therein requires our express consent.

Template TD-00002Y

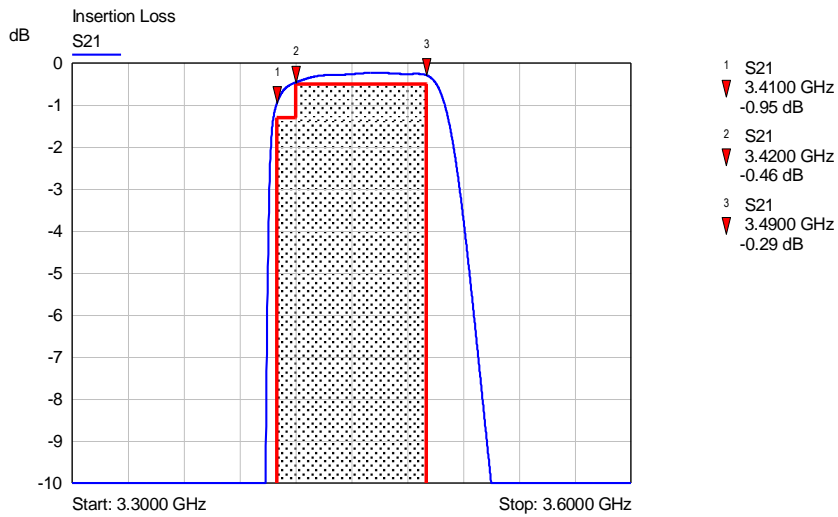
Bandpass Filter 3.5 GHz

Measurements:

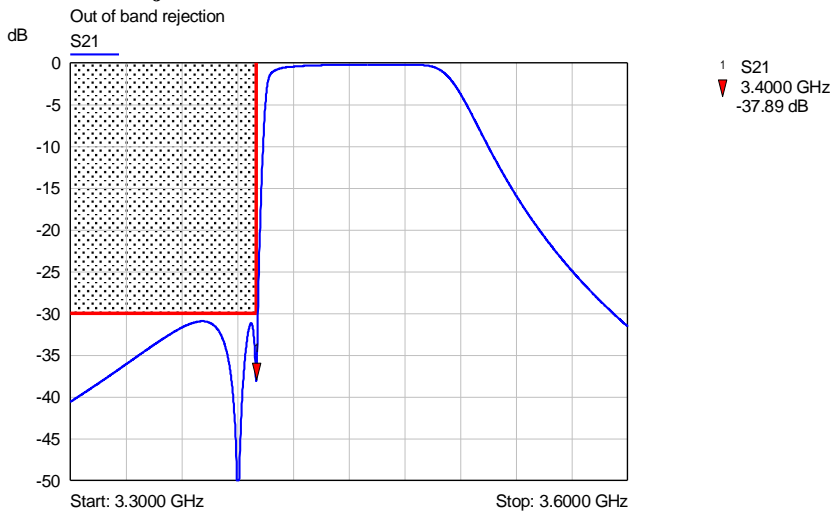
VSWR:



Insertion loss:



Out of band rejection:



SPINNER GmbH
This document is proprietary to us.
All rights reserved. Any use, transfer, or reproduction of this document
or the know-how contained therein requires our express consent.

Template TD-00002Y