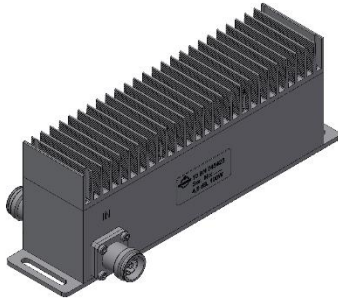
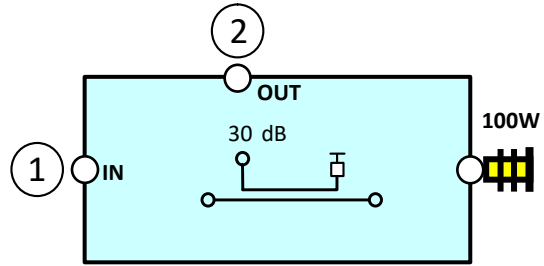


**Low PIM Attenuator 4.8dB / 6dB / 7dB / 8dB / 10dB / 13dB / 15dB / 20dB / 30dB**



Picture not binding



Block Diagram  
(Example: 30dB Attenuator)

**Electrical characteristics**

| Part number                        | BN 745423                | BN 745424        | BN 745425        | BN 745426        | BN 745427         | BN 745428         | BN 745429         | BN 745430         | BN 745431         |
|------------------------------------|--------------------------|------------------|------------------|------------------|-------------------|-------------------|-------------------|-------------------|-------------------|
| Frequency range                    | 350 - 4200 MHz           |                  |                  |                  |                   |                   |                   |                   |                   |
| Attenuation                        | 4.8 dB<br>± 1.2dB        | 6 dB<br>± 1.2 dB | 7 dB<br>± 1.2 dB | 8 dB<br>± 1.5 dB | 10 dB<br>± 1.5 dB | 13 dB<br>± 1.5 dB | 15 dB<br>± 1.5 dB | 20 dB<br>± 2.0 dB | 30 dB<br>± 2.0 dB |
| VSWR                               | ≤ 1.30                   |                  |                  |                  |                   |                   |                   |                   |                   |
| IM - value<br>3rd order @ 2 x 20 W | ≤ -160 dBc @ 698-3800MHz |                  |                  |                  |                   |                   |                   |                   |                   |
| Impedance                          | 50 Ohm                   |                  |                  |                  |                   |                   |                   |                   |                   |
| Power Rating                       | ≤ 100 W (CW)             |                  |                  |                  |                   |                   |                   |                   |                   |

**Mechanical characteristics**

|   |   |
|---|---|
| Connectors                                  | 4.3-10 female                             |
| Dimensions, approx.<br>(Without connectors) | 230 x 50 x 80 mm (Width x Height x Depth) |
| Weight, approx.                             | 1.5 kg                                    |
| Wall / Mast mounting                        | to be ordered separately BN 30349A        |

**Environmental conditions**

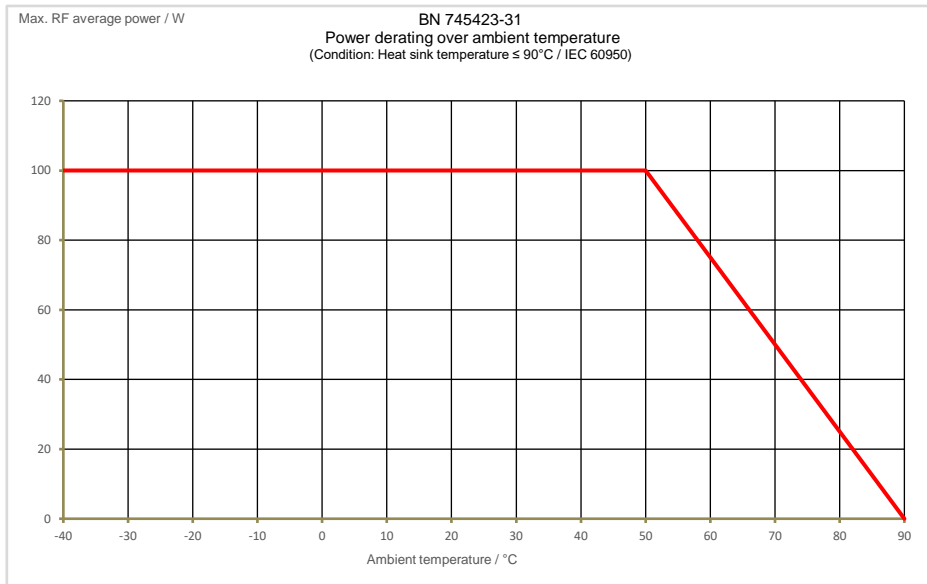
|                                     |  |
|-------------------------------------|--|
| Class. of environmental conditions  | ETSI EN 300019-1-1 Class 1.2<br>ETSI EN 300019-1-2 Class 2.3<br>ETSI EN 300019-1-4 Class 4.1E    |
| Degree of protection                | IP 65 (Outdoor)  |
| Operation Ambient temperature range | -40 °C to +50 °C (full power rating)<br>+50 to +85 °C (limited power rating, see derating curve) |
| Storage Ambient temperature range   | -40 °C to +85 °C   |
| Relative humidity, max.             | 95% (non-condensing)   |

SPINNER GmbH  
 This document is proprietary to us.  
 All rights reserved. Any use, transfer, or reproduction of this document  
 or the know-how contained therein requires our express consent.

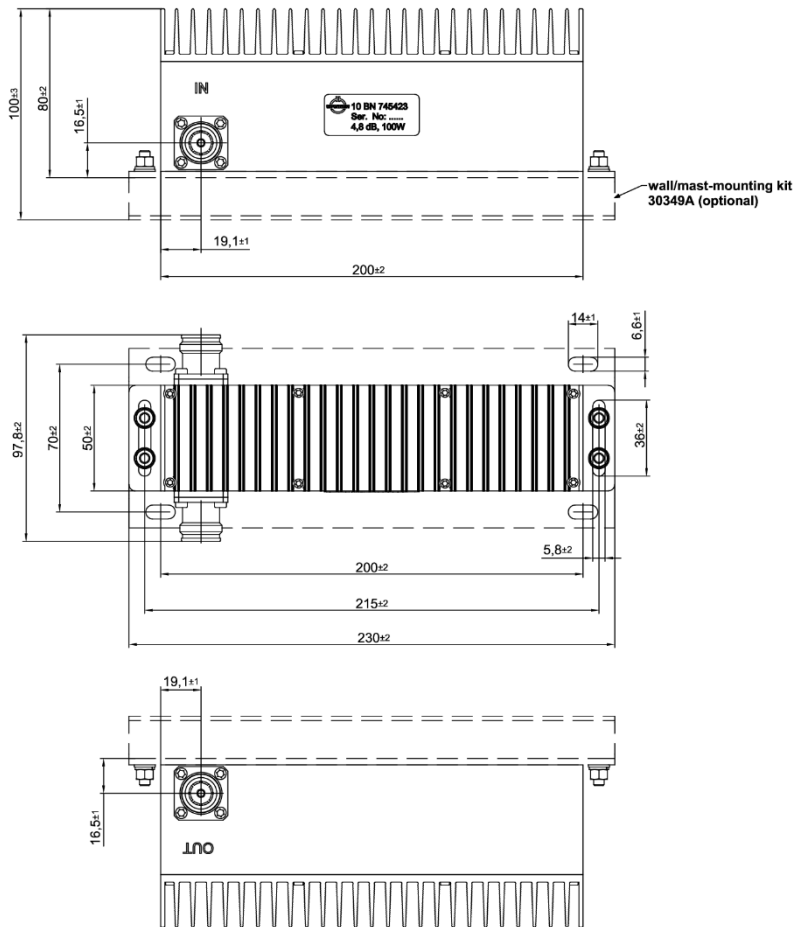
Template TD-00002Y

**Low PIM Attenuator 4.8dB / 6dB / 7dB / 8dB / 10dB / 13dB / 15dB / 20dB / 30dB**

**Temperature derating diagram:**



**Outline (all dimensions in millimeter)**



**Standard:**  
4.3-10 female (50 ohms): IEC 61169-54

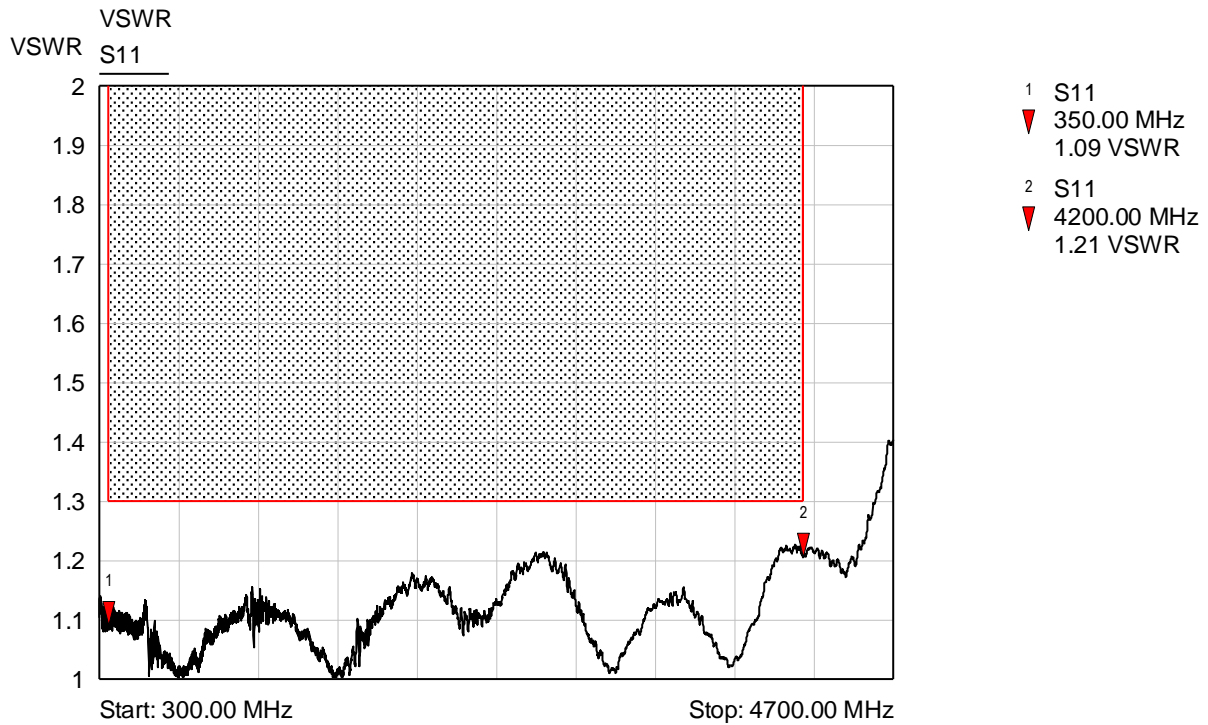
modifications reserved!

SPINNER GmbH  
This document is proprietary to us.  
All rights reserved. Any use, transfer, or reproduction of this document  
or the know-how contained therein requires our express consent.

Template TD-00002Y

Low PIM Attenuator 4.8dB / 6dB / 7dB / 8dB / 10dB / 13dB / 15dB / 20dB / 30dB

Measurements: VSWR



SPINNER GmbH  
 This document is proprietary to us.  
 All rights reserved. Any use, transfer, or reproduction of this document  
 or the know-how contained therein requires our express consent.

Template TD-00002Y