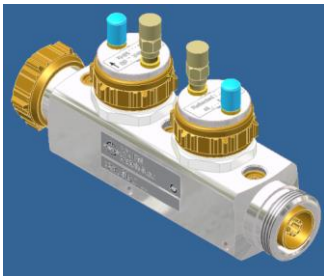
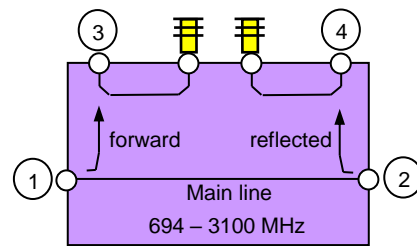


Double Directional Coupler



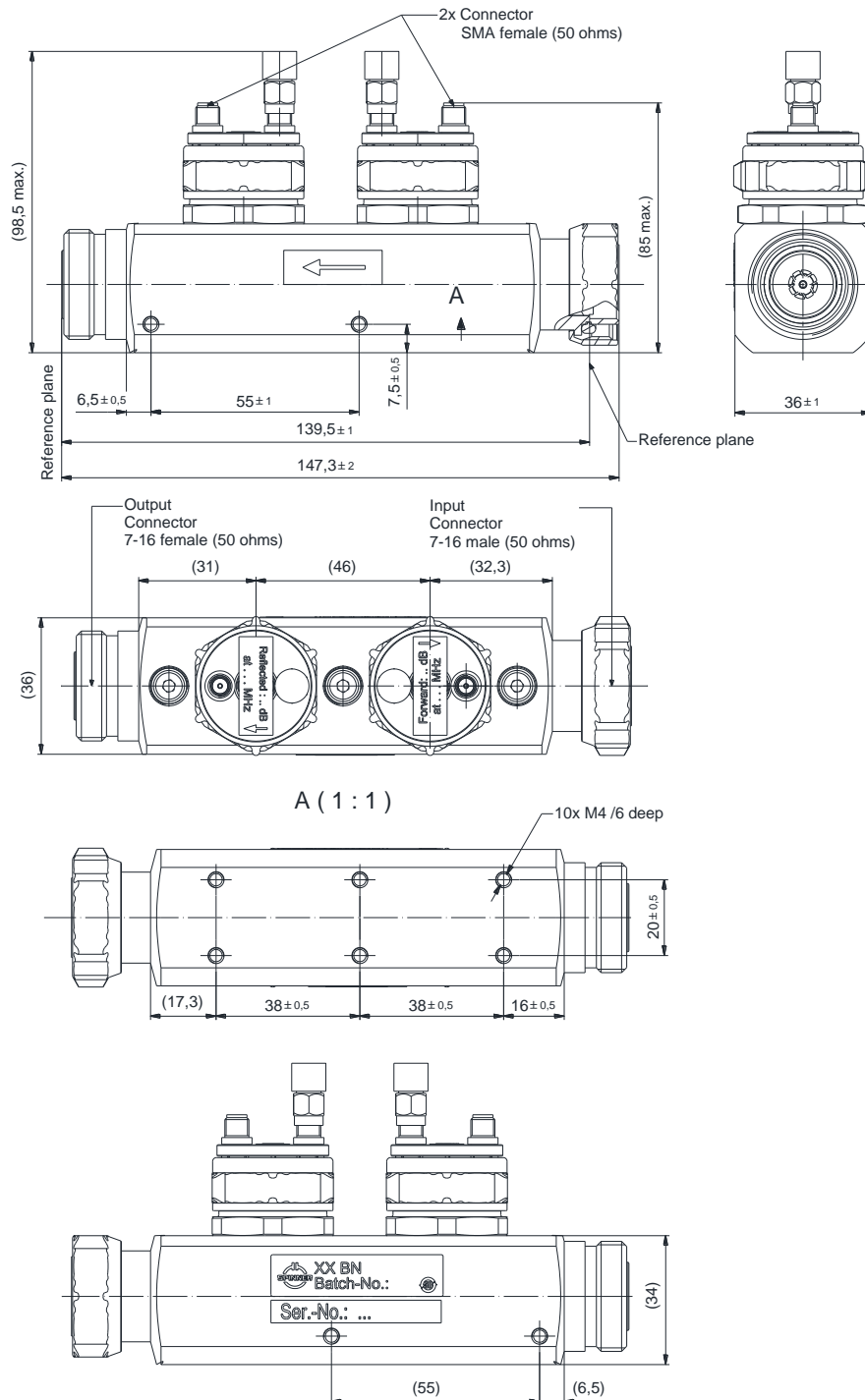
not binding



block diagram

Part number	BN 800469				
Connectors	main line	7-16 plug / socket (50 Ohms)			
	coupled line	SMA socket (50 Ohms)			
Termination load	Incl. 2 W				
Frequency range	694 – 3100 MHz				
Tunable Coupling Range	694 – 960 MHz	1710 – 1880 MHz	1920 – 2170 MHz	2500 – 2700 MHz	2700 - 3100 MHz
Coupling forward S31 or Coupling reflected S42	30 – 60 dB	30 – 52 dB	30 – 51 dB	30 – 49 dB	30 – 49 dB
Isolation forward S41 or Isolation reflected S32	≥ 60 – 90 dB	≥ 60 – 82 dB	≥ 60 – 81 dB	≥ 60 – 79 dB	≥ 60 – 79 dB
Directivity	≥ 30 dB	≥ 30 dB	≥ 30 dB	≥ 30 dB	≥ 30 dB
Coupling accuracy	± 1.5 dB	± 1.0 dB	± 1.0 dB	± 0.5 dB	± 0.8dB
VSWR main line	≤ 1.1				
Insertion loss main line	≤ 0.1 dB				
Power rating	max. 500 W CW				
IM – value 3rd order at 2 x 20 W	≤ -160 dBc typical: ≤ -165 dBc				
Degree of protection mated / 1bar, 1h, ≤18°C	IP 20 (indoor)				
Environmental conditions	ETSI EN 300019-1-1 Class 1.2 ETSI EN 300019-1-2 Class 2.3 ETSI EN 300019-1-3 Class 3.3				
Weight	0.8 kg				
Temperature range	-40 – +70 °C				

Dimensions:



Standards:

- 7-16 female (50 ohms) : CECC 22190, IEC 61169-4
- 7-16 male (50 ohms) : CECC 22190, IEC 61169-4
- SMA (50 ohms) : CECC 22110, IEC 169-15

Modification of construction reserved!

Measurements:

