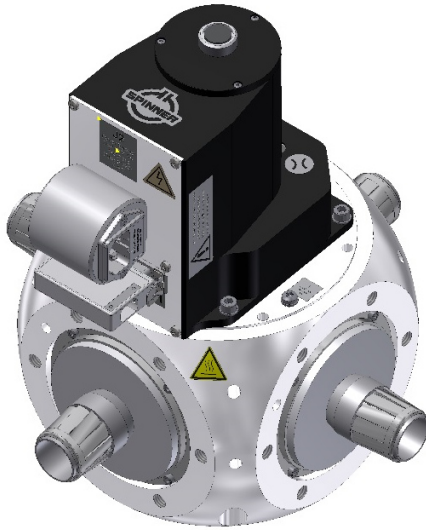


Coaxial Two Way Switch (DPDT) || BN 941918C0110



Product manual: M36024

Radio frequency characteristics

Interface type (4 connections)	3 1/8" EIA according to EN 122150 (threaded flanges)		
Characteristic impedance	50 Ω		
Frequency range	0 to 100 MHz	100 to 230 MHz	230 to 860 MHz
VSWR, max.	1.03	1.03	1.05
Isolation, min.	75 dB		
Insertion loss, max.	0.05 dB		
Average power capability * at ambient temperature -10 to +45°C	70.0 kW	46.0 kW	24.0 kW
Peak voltage capability *	13.3 kV		

Electrical and mechanical data

Switch type	Two way switch, DPDT	
Actuator type	Motor drive, latching, self cutoff	
Connector J2 ** for mains connection	IEC appliance inlet C14 according to IEC 60320-1	
Mains connection	L, N, PE, TN-System	
Operating	Operating voltage	95 to 140 V AC 50/60 Hz
	Current, typ. ***	1 A
	Nominal fuse	F1 / F2: 2 A T
Connector J1 ** for control, interlock contacts and signaling	25 pole connector according to DIN 41652 / IEC 807-2	
Control	Control voltage	SELV circuits according to IEC-EN-60950-1, 8 to 31 V DC
	Current, typ. ***	12 mA at control voltage 24 V DC
	Current limiting	The circuit must be externally limited to 0.5 A

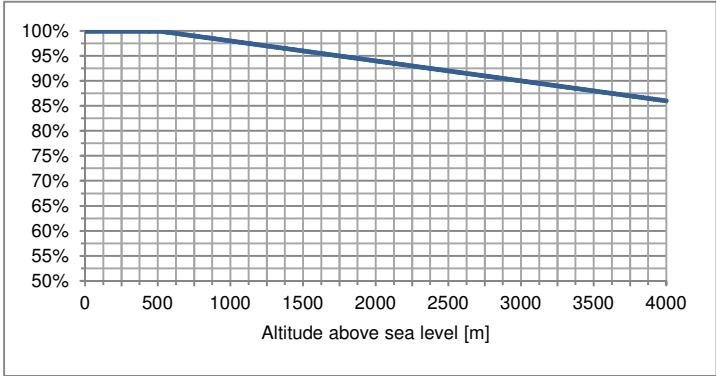
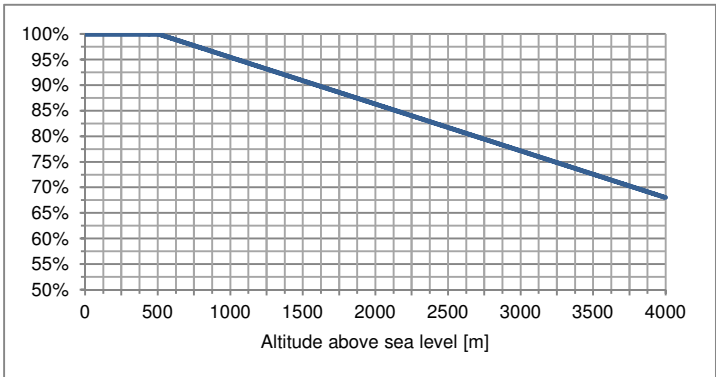
This document is proprietary to us. All rights reserved. Any use, transfer, or reproduction of this document or the know-how contained therein requires our express consent.

Template TD-00002Y

Coaxial Two Way Switch (DPDT) || BN 941918C0110

Signal contacts Interlock contacts	Lead time typ.***	50 ms (the interlock/signal contacts open 50 ms before and close 50 ms after switching of the RF contacts)
	Maximum ratings	SELV circuits according to IEC-EN-60950-1, 42.4 V ACpk / 60 V DC / 0.5 A
	Current limiting	The circuit must be externally limited to 0.5 A
Switching time, typ.***		0.2 s
Command hold time, min.		0.2 s (during this time, the voltage at control input must not change)
Switching frequency, max.		5 cycles per minute, max. 50 cycles per hour (10 operations per minute, max. 100 operations per hour)
Life, min.		250,000 cycles (500,000 operations)
Weight, approx.		10.5 kg

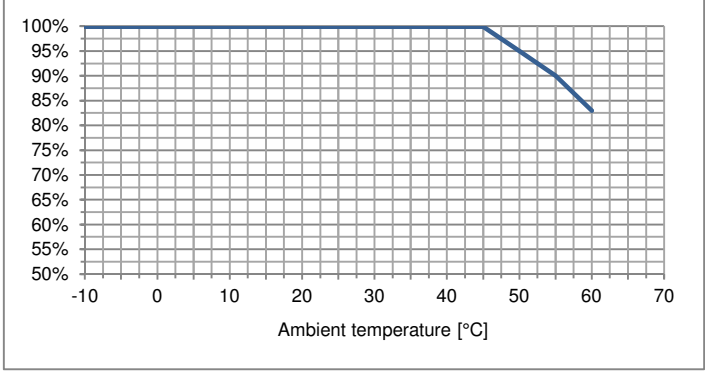
Environmental conditions

Operational conditions	ETSI EN 300 019-1-3 V2.3.2 (2009-1) class 3.1 N
Ambient temperature ****	-10 to +60°C
Condensation	Not allowed
Relative humidity, max.	95%
Derating of input power with increasing altitude	<p>The maximum input power can be applied up to 500 m or 1600 ft above sea level unless noted otherwise in the data sheet. Above this height the maximum input power must be reduced as shown in the diagram.</p> 
Derating of voltage with increasing altitude	<p>The maximum voltage can be applied up to 500 m or 1600 ft above sea level unless noted otherwise in the data sheet. Above this height the voltage must be reduced as shown in the diagram.</p> 

This document is proprietary to us. All rights reserved. Any use, transfer, or reproduction of this document or the know-how contained therein requires our express consent.

SPINNER GmbH
 Template TD-00002Y

Coaxial Two Way Switch (DPDT) || BN 941918C0110

<p>Derating of input power with increasing ambient temperature</p>	<p>The maximum input power can be applied up to +45°C ambient temperature unless noted otherwise in the data sheet. Above this ambient temperature the maximum input power must be reduced as shown in the diagram.</p>  <table border="1"> <caption>Derating of input power data</caption> <thead> <tr> <th>Ambient temperature [°C]</th> <th>Input Power (%)</th> </tr> </thead> <tbody> <tr><td>-10</td><td>100</td></tr> <tr><td>0</td><td>100</td></tr> <tr><td>10</td><td>100</td></tr> <tr><td>20</td><td>100</td></tr> <tr><td>30</td><td>100</td></tr> <tr><td>40</td><td>100</td></tr> <tr><td>45</td><td>100</td></tr> <tr><td>50</td><td>95</td></tr> <tr><td>60</td><td>82</td></tr> </tbody> </table>	Ambient temperature [°C]	Input Power (%)	-10	100	0	100	10	100	20	100	30	100	40	100	45	100	50	95	60	82
Ambient temperature [°C]	Input Power (%)																				
-10	100																				
0	100																				
10	100																				
20	100																				
30	100																				
40	100																				
45	100																				
50	95																				
60	82																				
<p>Max. altitude above sea level</p>	<p>4,000 m or 13,120 ft according to IEC EN 60664-1</p>																				
<p>Protection class</p>	<p>I according to IEC EN 61140</p>																				
<p>IP protection level</p>	<p>IP40 according to IEC EN 60529 (all interfaces equipped with appropriate gaskets)</p>																				
<p>Installation position</p>	<p>Any</p>																				
<p>Transport conditions</p>	<p>ETSI EN 300 019-1-2 V2.1.4 (2003-04) class 2.2</p>																				
<p>Ambient temperature</p>	<p>-25 to +70°C</p>																				
<p>Rain, condensation, icing</p>	<p>Not allowed</p>																				
<p>Storage conditions</p>	<p>ETSI EN 300 019-1-1 V2.1.4 (2003-04) class 1.2</p>																				
<p>Ambient temperature</p>	<p>-10 to +60°C</p>																				
<p>Rain, condensation, icing</p>	<p>Not allowed</p>																				

- * *Standard conditions:*
Dielectric: Dry air under standard pressure at sea level (p = 1013 hPa)
Load VSWR, max. 1.0 (no standing wave)
No modulation, sinusoidal carrier only
- ** *Suitable US power supply cord and 25 pole mating connector included*
- *** *At room temperature and nominal voltage 120 V AC, 60 Hz*
- **** *Extended temperature range on request*

SPINNER GmbH
 This document is proprietary to us.
 All rights reserved. Any use, transfer, or reproduction of this document
 or the know-how contained therein requires our express consent.

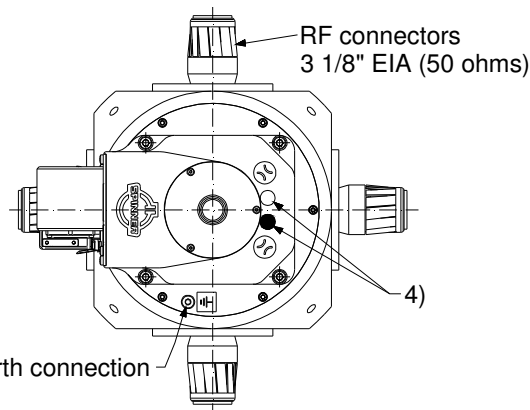
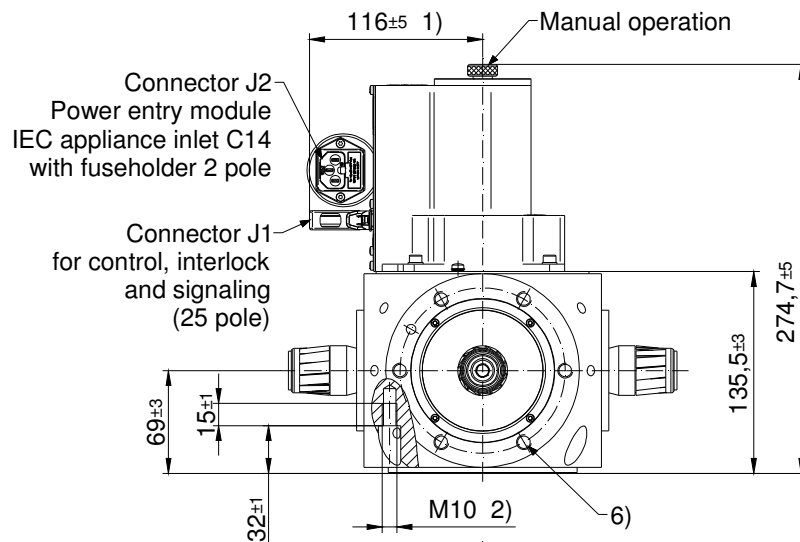
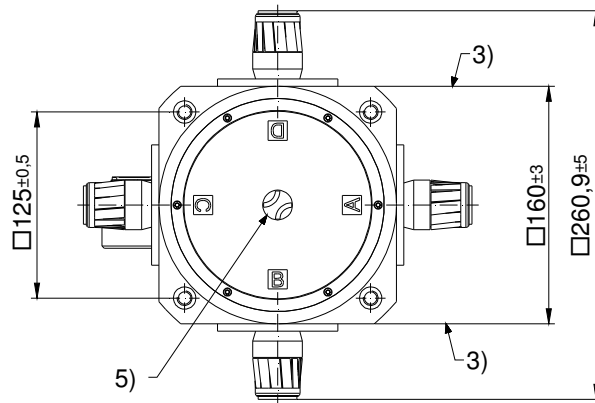
Template TD-00002Y

Coaxial Two Way Switch (DPDT) || BN 941918C0110

Outline (all dimensions in millimeters)

© 1999 Spinner GmbH Elektrotechnische Fabrik
 This drawing is proprietary to us. All rights reserved.
 Any use, transfer or reproduction of the drawing or the
 know-how contained therein requires our express consent.

RF connection
 RF position I: A-B / C-D
 RF position II: A-D / B-C



- 1) + 10 mm to disconnect the connectors
- 2) Four threaded mounting holes
- 3) Reference plane
- 4) Position indicator top side
current position is shown by white dot (marking)
- 5) Position indicator bottom side
current position is shown by pictogram
- 6) Fastening set for RF connectors
is part of delivery

Diese Zeichnung ist unser Eigentum. Verwendung, Vervielfältigung,
 Weitergabe der Zeichnungen oder des darin enthaltenen
 Know-Hows an Dritte nur mit unserer ausdrücklichen Genehmigung.

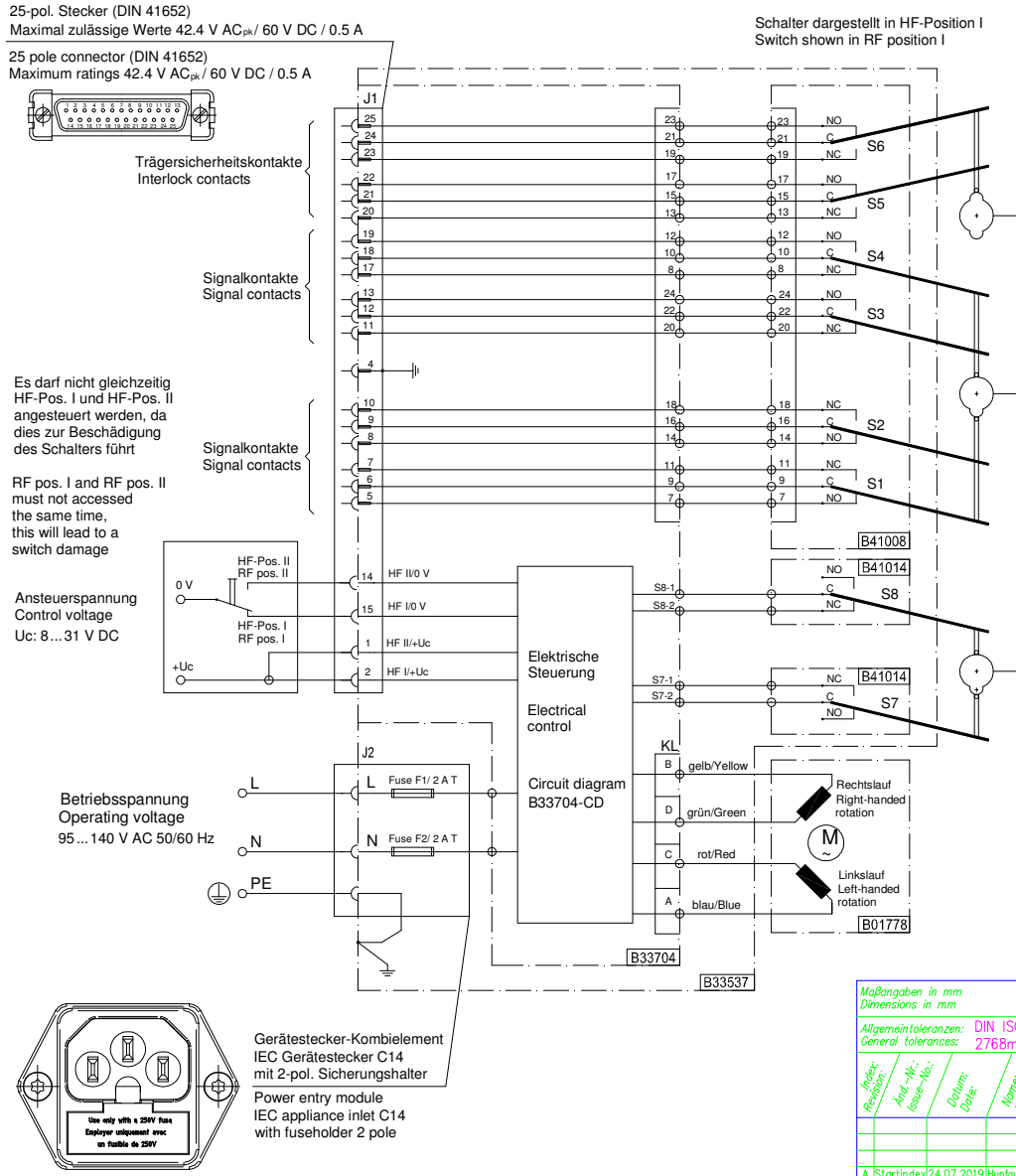
Maßangaben in mm Dimensions in mm		Projektion E: Projection E:		Maßstab / Scale: 1 : 4	
Allgemeintoleranzen: DIN ISO General tolerances: 2768mH		Datum: Date:	Name: Name:	Bezeichnung: Title: coaxial two way switch outline	
Erstellt: Creator:	01.08.2019	Hupfauer		Zeichnungs-Nr.: Drawing-No.: 941918C0110-0E	
Geprüft: Checked:	07.08.2019	Hupfauer			
A Startindex 01.08.2019 Hupfauer		Spinner GmbH Erzglössereistr. 33 D-80335 München		Format: Format:	Blatt: Sheet: 1 von: of: 1

SPINNER GmbH
 This document is proprietary to us.
 All rights reserved. Any use, transfer, or reproduction of this document
 or the know-how contained therein requires our express consent.

Template TD-00002Y

Circuit diagram

© 1999 Spinner GmbH
This drawing is proprietary to us. All rights reserved.
Any use, transfer or reproduction of the drawing or the know-how contained therein requires our express consent.

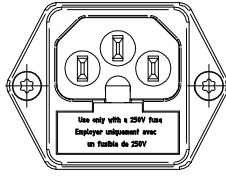


Es darf nicht gleichzeitig HF-Pos. I und HF-Pos. II angesteuert werden, da dies zur Beschädigung des Schalters führt

RF pos. I and RF pos. II must not accessed the same time, this will lead to a switch damage

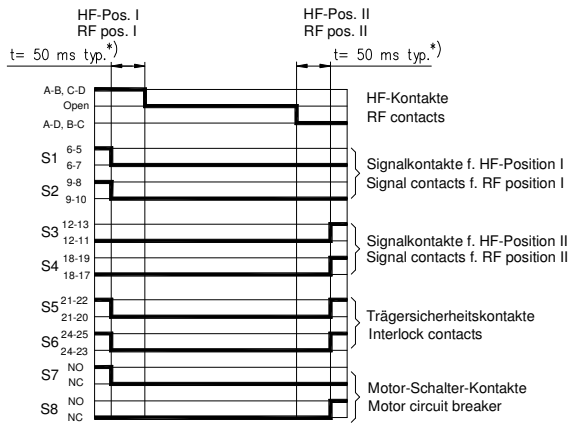
Ansteuerspannung
Control voltage
Uc: 8...31 V DC

Betriebsspannung
Operating voltage
95...140 V AC 50/60 Hz

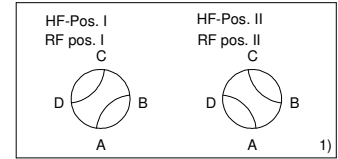


Gerätestecker-Kombielement
IEC Gerätestecker C14 mit 2-pol. Sicherungshalter

Power entry module
IEC appliance inlet C14 with fuseholder 2 pole



*) Bei Raumtemperatur und Nennspannung 110 V AC
*) At room temperature and nominal voltage 110 V AC



1) Bei Verwendung als Umschalter muss ein Anschluss abgeschlossen werden
1) If used as a change-over switch (SPDT) one port must be terminated

Achtung: Signalkontakte auch als Trägersicherheitskontakte verwendbar
Attention: Signal contacts can be also used as interlock contacts

NC normally closed
C normally closed
NO normally opened

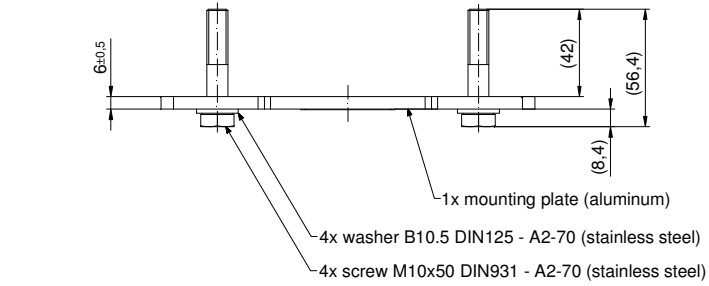
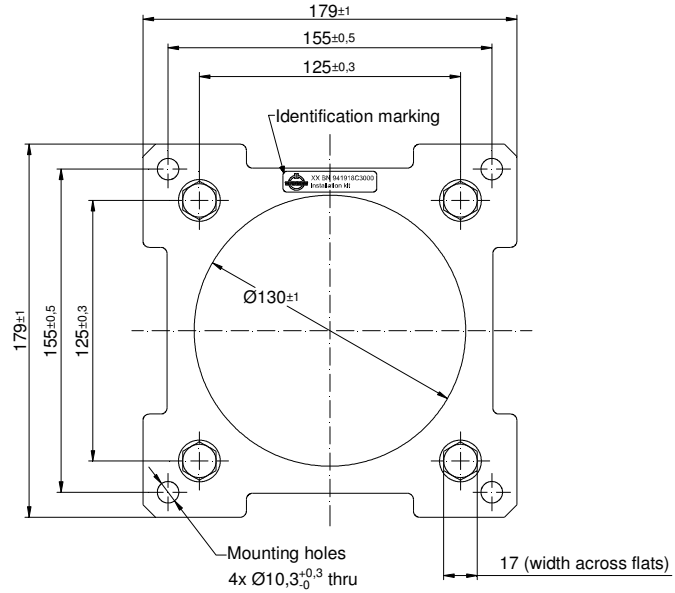
Stellung, wenn Mikroschalter nicht gedrückt ist
Position if microswitch is not pushed

Diese Zeichnung ist unser Eigentum. Verwendung, Vervielfältigung, Weitergabe der Zeichnungen oder des darin enthaltenen Know-hows an Dritte nur mit unserer ausdrücklichen Genehmigung.

Maßangaben in mm Dimensions in mm		Projektion E: Projection E:		Maßstab: / Scale: 1:1	
Allgemeintoleranzen: General tolerances: DIN ISO 2768mH		Datum: Date:	Name: Name:	Bezeichnung: Title:	
Erstellt: Creator:	24.07.2019	Hupfauer	circuit diagram		
Geprüft: Checked:	02.08.2019	Hupfauer	coaxial two way switch 95 to 140 V AC control voltage 8 to 31 V DC		
Zeichnungs-Nr.: Drawing-No.:		Format: Format:		Blatt: Sheet:	
A Startindex 24.07.2019 Hupfauer		Spinner GmbH Ergzesselerstr. 33 D-80335 München		von: of:	
		B33703-CD		A3	

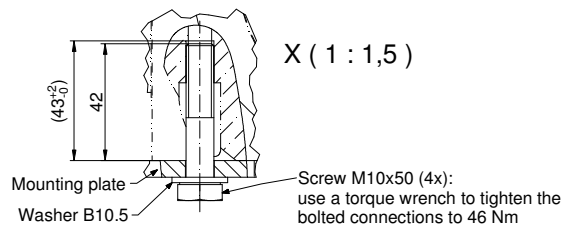
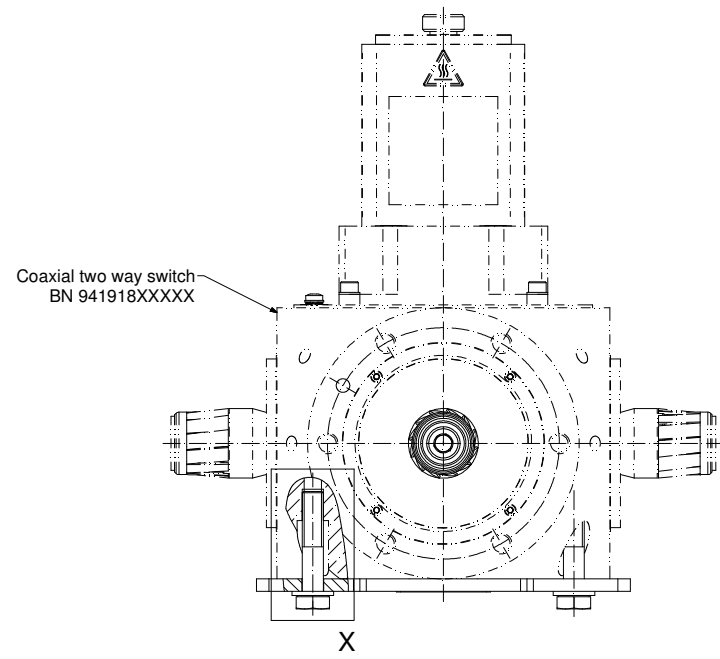


Installation kit BN 941918C3000:



Do not use the installation kit to support additional mechanical loads.

Installation instructions for BN 941918C3000-installation kit:



Maßangaben in mm Dimensions in mm		Projektion E: Projection E:		Maßstab: / Scale: 1 : 2	
Allgemeintoleranzen: General tolerances: DIN ISO 2768mH		Date:	Name:	Bezeichnung: Title:	
Erstellt: Creator:	06.08.2019	Hauptauer		installation kit	
Gepflegt: Checked:	07.08.2019	Hauptauer		for coaxial two way switch (DPDT)	
				3 1/8" (50 Ohm)	
A Startindex06.08.2019Hauptauer		Spinner GmbH Ergleßersreistr. 33 D-80335 München		Zeichnungs-Nr.: Drawing-No.:	Format: Format: A3
				Blatt: Sheet: 1	
				von: of: 1	

© 1988 Spinner GmbH, Elektrotechnische Fabrik. This drawing is proprietary to us. All rights reserved. Any use, transfer or reproduction of the drawing or the know-how contained therein requires our express consent.

Diese Zeichnung ist unser Eigentum. Verwendung, Vervielfältigung, Weitergabe der Zeichnungen oder des darin enthaltenen Know-hows an Dritte nur mit unserer ausdrücklichen Genehmigung.

