

Gas Discharge Arrestor
Static sparkover voltage 1000 Volt

Sparkover voltage:

- Static (100 V/s) 800 V to 1200 V
- Dynamic (1 kV/μs) ≤ 1600 V

RF power rating:

- (unmodulated; VSWR=1; sea level; 40 °C) ≤ 3000 W

Arc (residual) voltage:

≤ 30 V

Allowed surge current:

- Single pulse (8/20 μs) min. 25 kA
- 5 pulses in 3 min. (8/20 μs) min. 5 kA

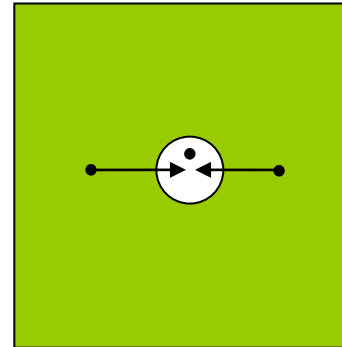
Isolation resistance:

≥ 1 GΩ

Capacitance:

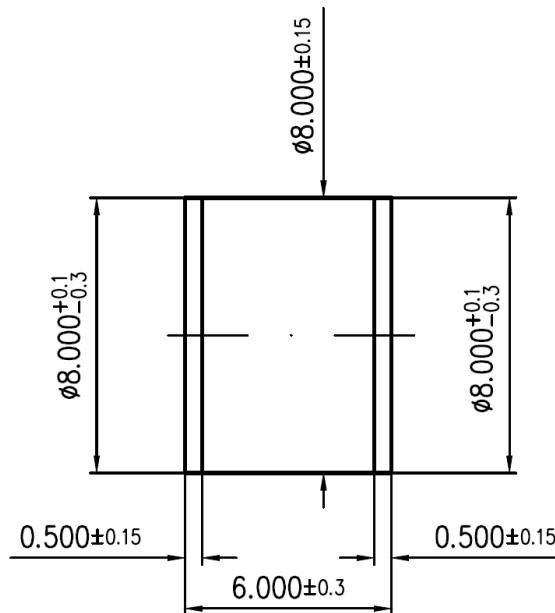
≤ 1 pF

Free from radioactivity



Symbol for Block diagrams

Dimensions:



(dimensions in mm)

modifications reserved