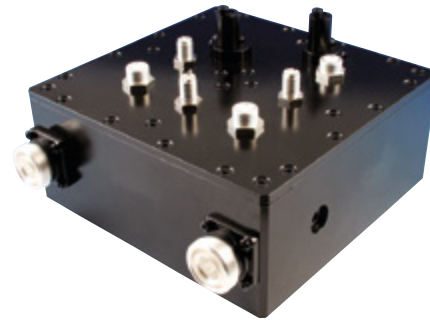
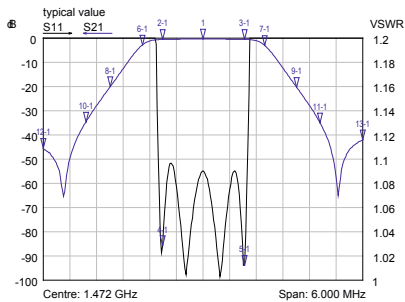


400 W BAND L DAB/T-DMB Bandpass Filter

- Mask filter for DAB and T-DMB
- For 1.54 MHz block bandwidth
- With cross coupling (notch function)
- Temperature compensated
- Dielectric resonators
- Installation vertically or horizontally
- DC block



Bandpass Filters



Typical diagram AS4039

| | |
|--|--|
| Part Number | BN 616516 |
| Frequency range | 1452 - 1492 MHz |
| Number/size of cavities | 4/DE |
| Mask filtering | DAB / T-DMB @ 1.54 MHz ($\hat{U}/U_{rms} = 13$ dB) |
| Average input power | ≤ 300 W ≤ 400 W with forced air cooling |
| Tuning instruction | AS4039 |
| Insertion loss & mask filtering (alternative tuning on request) | $f_0 \leq 0.45$ dB $f_0 \pm 0.77 \leq 0.55$ dB $f_0 \pm 0.97 \geq 0.70$ dB $f_0 \pm 1.15 \geq 1.50$ dB $f_0 \pm 1.75 \geq 12.0$ dB $f_0 \pm 2.20 \geq 26.0$ dB $f_0 \pm 3.00 \geq 40.0$ dB |
| VSWR (passband range) | ≤ 1.10 |
| Group delay variation | $\Delta\tau \leq 150$ ns |
| Temperature stability | ≤ 3 kHz / K |
| Connectors | 7-16 female |
| Dimensions (L x W x H) mm | 198 x 183 x 95 |
| Weight | ≈ 5 kg |
| Environmental conditions | For limitations see „Environmental Conditions for Broadcast Products“. |