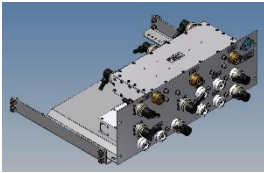
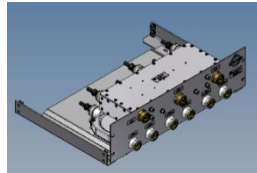


## Multiband Combining System

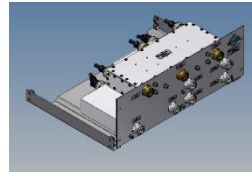
with 3 output ports



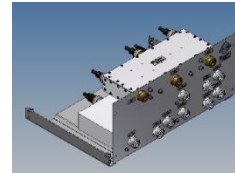
BN 610632



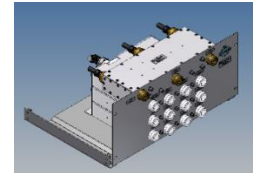
BN 610633



BN 610634



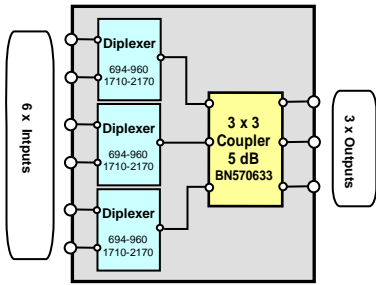
BN 610635



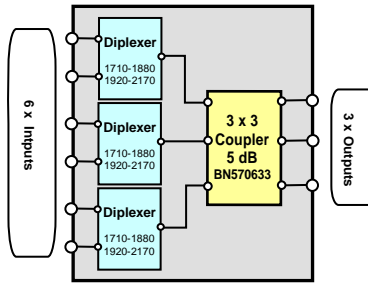
BN 610631

Part number	BN 610633	BN 610634	BN 610632	BN 610635	BN 610631
Input : output	6 : 3	6 : 3	6 : 3	9 : 3	12 : 3
Connectors	7-16 female (50 Ohms)				
Frequency range					
Band 1	694 - 960 MHz	1710 - 1880 MHz	694 - 2170 MHz	694 - 960 MHz	694 - 960 MHz
Band 2	1710 - 2170 MHz	1920 - 2170 MHz	2496 - 2690 MHz	1710 - 1880 MHz	1710 - 1880 MHz
Band 3				1920 - 2170 MHz	1920 - 2170 MHz
Band 4					2500 - 2690 MHz
Insertion loss (* splitting losses)	≤ 0.35 dB + 5 dB ± 0.8 dB*	≤ 0.65 dB + 5 dB ± 0.8 dB*	≤ 0.55 dB + 5 dB ± 0.8 dB*	≤ 0.65 dB + 5 dB ± 0.8 dB*	≤ 0.75 dB + 5 dB ± 0.8 dB*
Isolation					
Interband	≥ 50 dB				
Intraband	≥ 30 dB				
VSWR	≤ 1.4 (typ.1.25)				
Power rating (each input port)	≤ 200 W	≤ 200 W	≤ 200 W	≤ 130 W	≤ 125 W
IM-value 3rd order @ 2 x 20 W	≤ -155 dBc   typical: ≤ -160 dBc				
Degree of protection	indoor use (all components IP65)				
Environmental conditions	ETSI EN 300019-1-1 Class 1.2 ETSI EN 300019-1-2 Class 2.3 ETSI EN 300019-1-3 Class 3.3				
Weight	10 kg	17 kg	17.5 kg	19 kg	21 kg
Mounting	Wall mounting or 19" Rack mounting included				
Temperature range	-40 °C – +65 °C	-40 °C – +65 °C	-40 °C – +65 °C	-40 °C – +65 °C	-40 °C – +65 °C

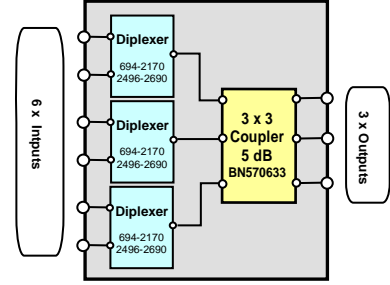
\*unused input ports must be terminated with 5W standard load 531712 (to be ordered separately).



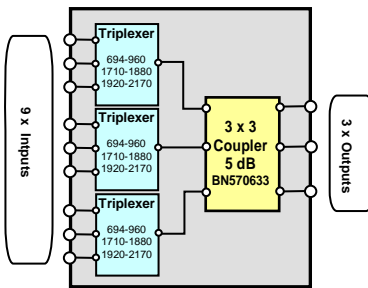
BN 610633



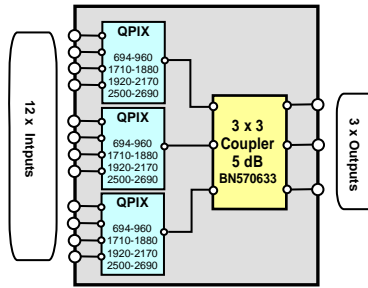
BN 610634



BN 610632

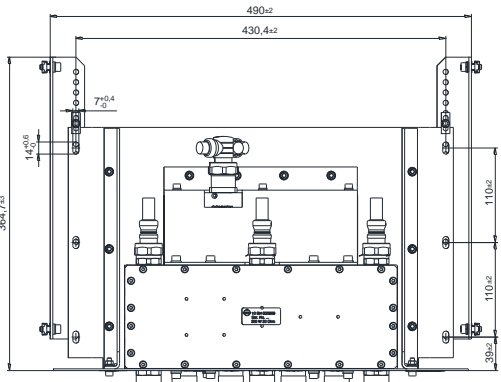
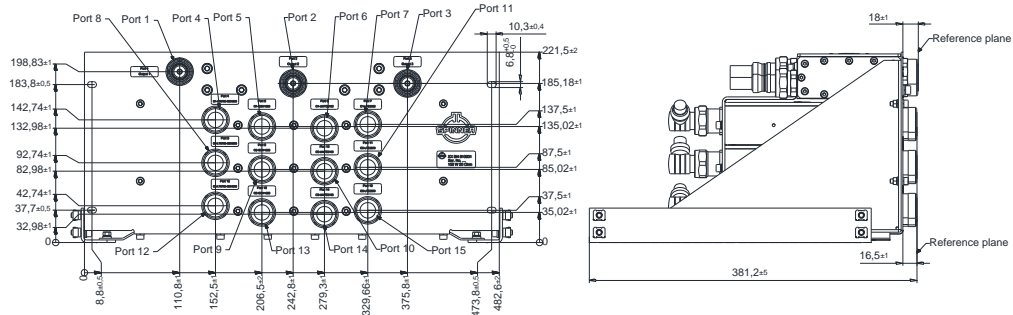


BN 610635



BN 610631

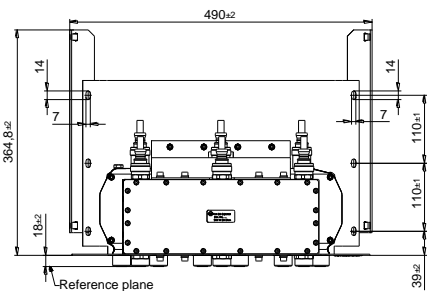
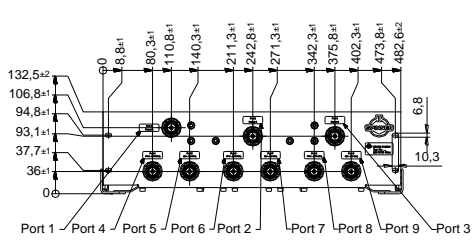
Dimensions:



No.	In/Output	MHz
Port 1	Output 1	
Port 2	Output 2	
Port 3	Output 3	
Port 4	Input	694-960 MHz
Port 5	Input	1710-1880 MHz
Port 6	Input	1920-2170 MHz
Port 7	Input	2500-2690 MHz
Port 8	Input	694-960 MHz
Port 9	Input	1710-1880 MHz
Port 10	Input	1920-2170 MHz
Port 11	Input	2500-2690 MHz
Port 12	Input	694-960 MHz
Port 13	Input	1710-1880 MHz
Port 14	Input	1920-2170 MHz
Port 15	Input	2500-2690 MHz

Standard:  
7-16 female (50 ohms); CECC 22190, IEC 61169-4  
modifications reserved

BN 610631



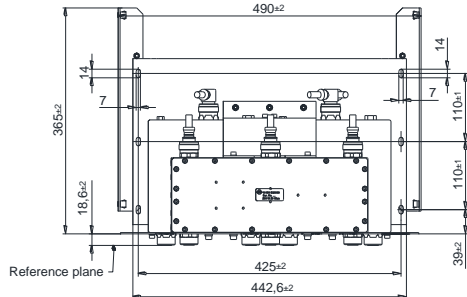
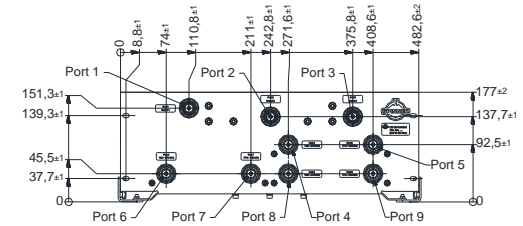
No.	In-/ Output	MHz	No.	In-/ Output	MHz
Port 1	Output 1		Port 6	Input	1710 - 2170 MHz
Port 2	Output 2		Port 7	Input	694 - 960 MHz
Port 3	Output 3		Port 8	Input	1710 - 2170 MHz
Port 4	Input	1710 - 2170 MHz	Port 9	Input	694 - 960 MHz
Port 5	Input	694 - 960 MHz			

Standard:

7-16 female (50 ohms): CECC 22190, IEC 61169-4

Modification reserved!

BN 610633



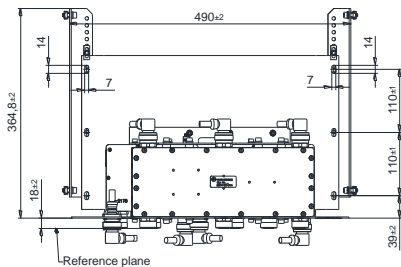
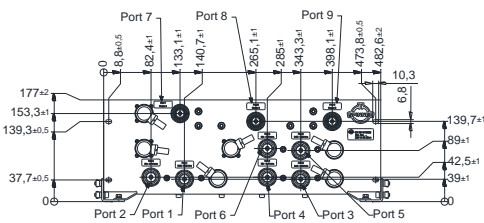
No.	In-/ Output	MHz	No.	In-/ Output	MHz
Port 1	Output 1		Port 6	Input	1920 - 2170 MHz
Port 2	Output 2		Port 7	Input	1710 - 1880 MHz
Port 3	Output 3		Port 8	Input	1920 - 2170 MHz
Port 4	Input	1920 - 2170 MHz	Port 9	Input	1710 - 1880 MHz
Port 5	Input	1710 - 1880 MHz			

Standard:

7-16 female (50 ohms): CECC 22190, IEC 61169-4

Modification reserved!

BN 610634



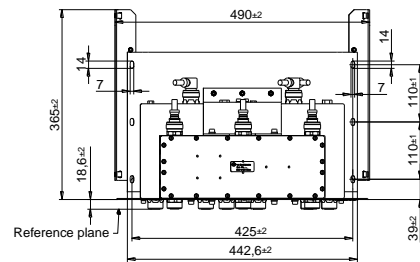
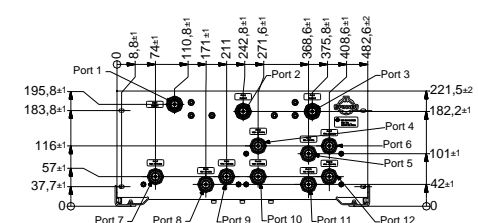
No.	In-/ Output	MHz	No.	In-/ Output	MHz
Port 1	Input	2496 - 2690 MHz	Port 7	Output 1	
Port 2	Input	694 - 2170 MHz	Port 8	Output 2	
Port 3	Input	2496 - 2690 MHz	Port 9	Output 3	
Port 4	Input	694 - 2170 MHz			
Port 5	Input	2496 - 2690 MHz			
Port 6	Input	694 - 2170 MHz			

Standard:

7-16 female (50 ohms): CECC 22190, IEC 61169-4

Modification reserved!

BN 610632



No.	In-/ Output	MHz	No.	In-/ Output	MHz
Port 1	Output 1		Port 7	Input	1920 - 2170 MHz
Port 2	Output 2		Port 8	Input	694 - 960 MHz
Port 3	Output 3		Port 9	Input	1710 - 1880 MHz
Port 4	Input	1920 - 2170 MHz	Port 10	Input	1920 - 2170 MHz
Port 5	Input	694 - 960 MHz	Port 11	Input	694 - 960 MHz
Port 6	Input	1710 - 1880 MHz	Port 12	Input	1710 - 1880 MHz

Standard:

7-16 female (50 ohms): CECC 22190, IEC 61169-4

Modification reserved!

BN 610635